

REPORT

COMPANY NAME: NISHANT AROMAS PRIVATE LIMITED, HARIDWAR

LOT NO. : ---

Sample Name: Valerian Oil DB5

Data File: C:\NuChrom\ch1def00\Valerian Oil DB5.dat

Method File: .MET

Detector: FID.

System: GC

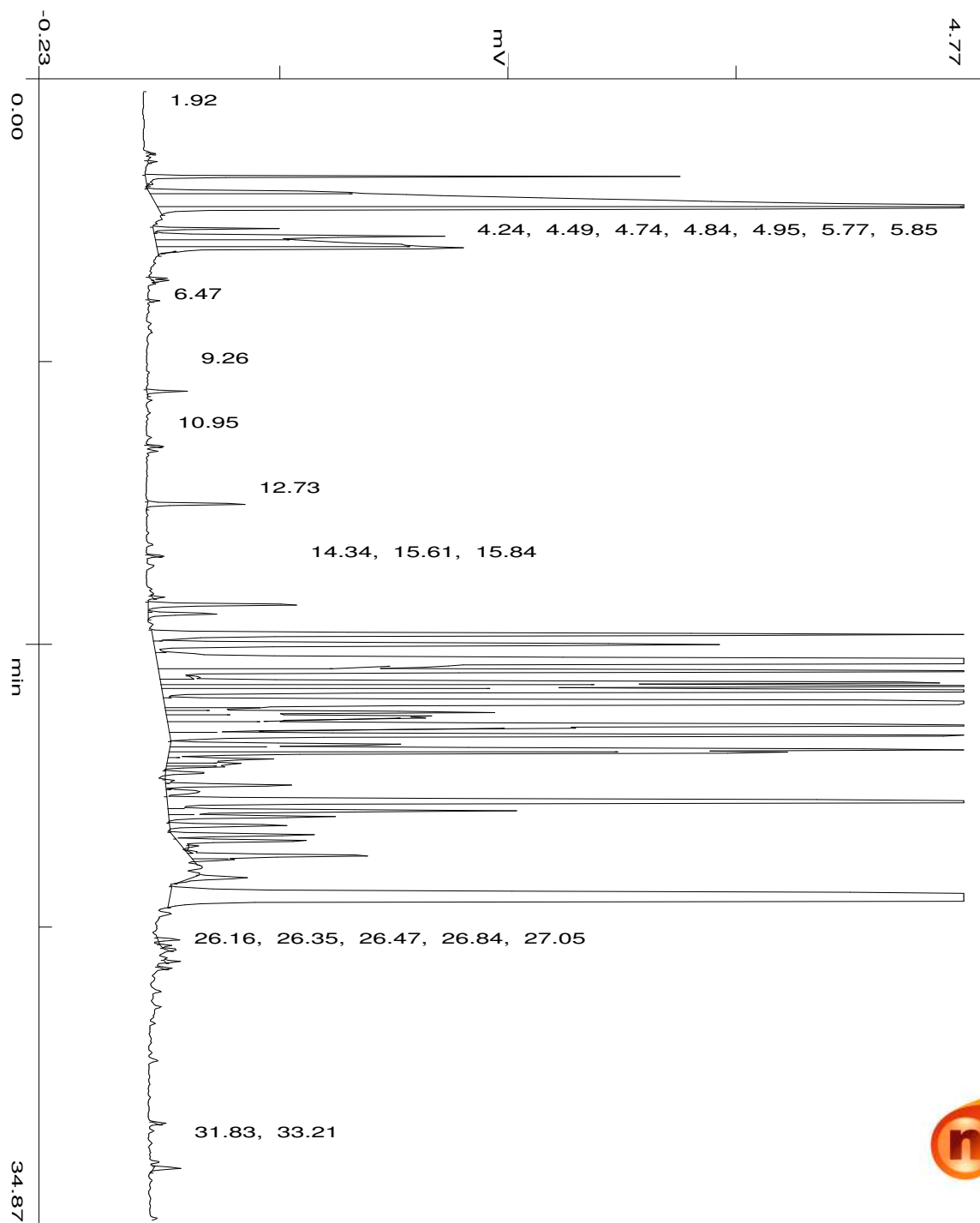
Date: 14 Aug 2023

Time: 11:29:50

Run: ch1: 0

Type of Analysis : Percent On Area

Pk.Width	Peak Thrsh.	Area Rej.	Ht.Rej.	Cht.Speed
4	30	5	4	0.50



min

50.07

No.	R.T.	Area	Area %	Pk Ty	Comp Name
1	2.19	1574	0.0143	BB	
2	2.63	84530	0.7683	BP	
3	2.86	1096	0.0100	TTT	
4	3.11	53185	0.4834	PV	
5	3.51	705882	6.4155	VV	Isoaleric acid
6	3.64	335428	3.0486	VB	
7	4.24	22129	0.2011	BV	
8	4.49	101754	0.9248	VV	
9	4.74	144616	1.3144	VV	
10	4.84	112452	1.0220	VB	
11	4.95	2690	0.0244	TTT	
12	5.77	2855	0.0259	BV	
13	5.85	2778	0.0252	VB	
14	6.47	1648	0.0150	BB	
15	9.26	8805	0.0800	BB	
16	10.95	1685	0.0153	BB	
17	12.73	26666	0.2424	BB	
18	14.34	1682	0.0153	BB	
19	15.61	2460	0.0224	BB	
20	15.84	46654	0.4240	BV	
21	16.12	21072	0.1915	VB	
22	16.76	305107	2.7730	BV	
23	17.07	228276	2.0747	VV	
24	17.61	1523818	13.8494	VV	Gurjunene <-alpha->
25	17.75	17549	0.1595	TTT	
26	17.89	397391	3.6117	VV	
27	18.07	1958	0.0178	TTT	
28	18.24	274891	2.4984	VV	
29	18.35	295937	2.6897	VV	
30	18.52	637339	5.7925	VV	
31	18.88	910304	8.2734	VV	
32	19.03	24043	0.2185	S	
33	19.16	90616	0.8236	VV	
34	19.28	137671	1.2512	VV	
35	19.34	11452	0.1041	TTT	
36	19.57	506893	4.6070	VV	

37	19.65	24260	0.2205	TTT	
38	19.88	318049	2.8906	VP	
39	20.15	74980	0.6815	PV	
40	20.31	308714	2.8058	VV	
41	20.40	184276	1.6748	VV	
42	20.60	38792	0.3526	VV	
43	20.74	20701	0.1881	VV	
44	20.82	14297	0.1299	VP	
45	21.03	10607	0.0964	PP	
46	21.26	2312	0.0210	PV	
47	21.41	37111	0.3373	VV	
48	21.59	15756	0.1432	VP	
49	21.93	604614	5.4951	PV	
50	22.20	102218	0.9290	VV	
51	22.38	53559	0.4868	VP	
52	22.64	37793	0.3435	PP	
53	22.94	46806	0.4254	PV	
54	23.12	44009	0.4000	VV	
55	23.28	1039	0.0094	TTP	
56	23.44	1233	0.0112	TPT	
57	23.58	63759	0.5795	VV	
58	23.72	9500	0.0863	S	
59	24.25	22595	0.2054	BB	
60	24.96	1898029	17.2505	BB	Patchouli Alcohol
61	26.16	4133	0.0376	BP	
62	26.35	2191	0.0199	PP	
63	26.47	2312	0.0210	PB	
64	26.84	3059	0.0278	BB	
65	27.05	1711	0.0156	BB	
66	31.83	1869	0.0170	BB	
67	33.21	7601	0.0691	BB	
		11002769	100.0000		

Summary :

CH- 01

TOTAL PEAKS : 68
MUL. FACTOR : 1.0000
SAMPLE AMT. 100.0000
ISTD AMT. 0.0000000e+00
DILUTION : 1.0000