

REPORT

COMPANY NAME : NISHANT AROMAS PRIVATE LIMITED, HARIDWAR

LOT NO.: ---

Sample Name: Turmeric Oil DB5

Data File: C:\NuChrom\ch2def00\Turmeric Oil DB5.DAT

Method File: C:\NuChrom\NEW01.MET

Detector: FID.

System: GC

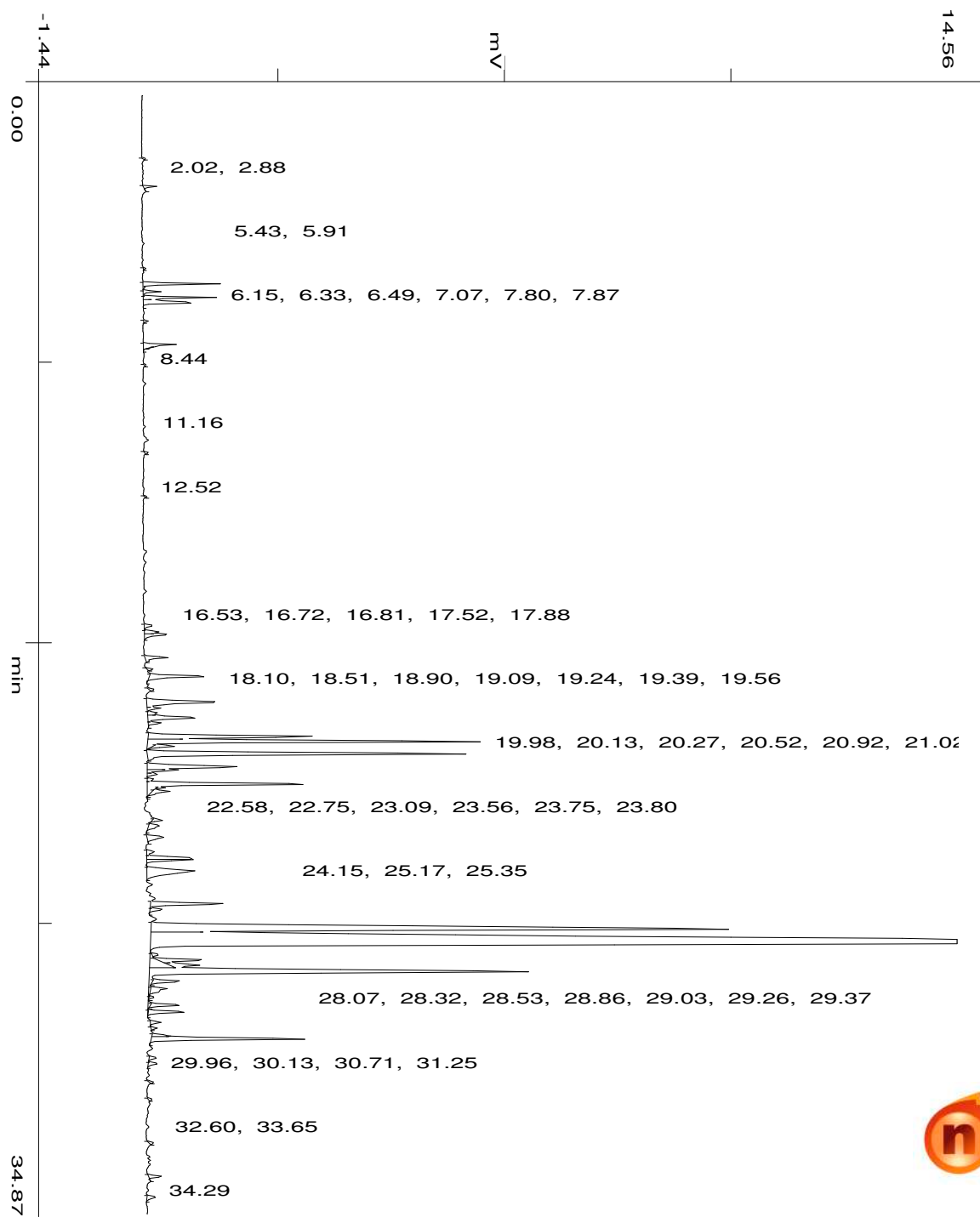
Date: 22 Jul 2023

Time: 12:14:12

Run: ch2: 3

Type of Analysis : Percent On Area

Pk.Width	Peak Thrsh.	Area Rej.	Ht.Rej.	Cht.Speed
4	30	5	4	0.50



min

51.17

No.	R.T.	Area	Area %	Pk Ty	Comp Name
1	2.02	1285	0.0174	BB	
2	2.88	6563	0.0891	BB	
3	5.43	1481	0.0201	BB	
4	5.91	46060	0.6250	BV	
5	6.15	11757	0.1595	VV	
6	6.33	44178	0.5995	VV	
7	6.49	50418	0.6842	VB	
8	7.07	2785	0.0378	BB	
9	7.80	27921	0.3789	BB	
10	7.87	1840	0.0250	TTT	
11	8.44	1333	0.0181	BB	
12	11.16	2484	0.0337	BB	
13	12.52	1307	0.0177	BB	
14	16.53	7686	0.1043	BV	
15	16.72	11303	0.1534	VV	
16	16.81	23415	0.3177	VB	
17	17.52	21530	0.2922	BB	
18	17.88	3810	0.0517	BB	
19	18.10	56665	0.7689	BB	
20	18.51	3604	0.0489	BB	
21	18.90	86726	1.1769	BV	
22	19.09	11191	0.1519	VV	
23	19.24	8746	0.1187	VV	
24	19.39	52727	0.7155	VV	
25	19.56	10703	0.1452	VB	
26	19.98	159876	2.1695	BV	
27	20.13	319550	4.3363	VP	
28	20.27	18120	0.2459	TTT	
29	20.52	319006	4.3289	PB	
30	20.92	103245	1.4010	BV	
31	21.02	24393	0.3310	VV	
32	21.15	9061	0.1230	VP	
33	21.31	5213	0.0707	PV	
34	21.45	166390	2.2579	VB	
35	21.56	5628	0.0764	TTP	

36	21.68	19664	0.2668	TPT	
37	22.58	8090	0.1098	BP	
38	22.75	15622	0.2120	PB	
39	23.09	20724	0.2812	BB	
40	23.56	8555	0.1161	BV	
41	23.75	35843	0.4864	VV	
42	23.80	38582	0.5236	VV	
43	24.15	91706	1.2444	VB	
44	25.17	71712	0.9731	BV	
45	25.35	11282	0.1531	VB	
46	25.95	883818	11.9934	BV	Turmerone <ar-dihydro->
47	26.40	3626803	49.2155	VV	Tumerone <ar->
48	26.75	4803	0.0652	TTP	
49	26.92	40179	0.5452	TPV	
50	27.08	28284	0.3838	TVT	
51	27.28	507808	6.8909	VB	Tumerone
52	27.58	25011	0.3394	TTT	
53	27.81	22972	0.3117	TTV	
54	28.07	4526	0.0614	TVT	
55	28.32	27031	0.3668	TTT	
56	28.53	33804	0.4587	TTT	
57	28.86	8439	0.1145	BP	
58	29.03	4420	0.0600	PB	
59	29.26	9466	0.1285	S	
60	29.37	147729	2.0047	BB	
61	29.96	7149	0.0970	BV	
62	30.13	9252	0.1255	VB	
63	30.71	2665	0.0362	BB	
64	31.25	2715	0.0368	BB	
65	32.60	3095	0.0420	BB	
66	33.65	10162	0.1379	BB	
67	34.29	9313	0.1264	BB	
		7369224	100.0000		

Summary :

TOTAL PEAKS : 67
MUL. FACTOR : 1.0000
SAMPLE AMT. 100.0000
ISTD AMT. 0.0000000e+00
DILUTION : 1.0000