

REPORT

COMPANY NAME: NISHANT AROMAS PRIVATE LIMITED, HARIDWAR

LOT NO.: ---

Sample Name: Tuberose Absolute DB5

Data File: C:\NuChrom\Tuberose Absolute DB5.DAT

Method File: .MET

Detector: FID.

System: GC

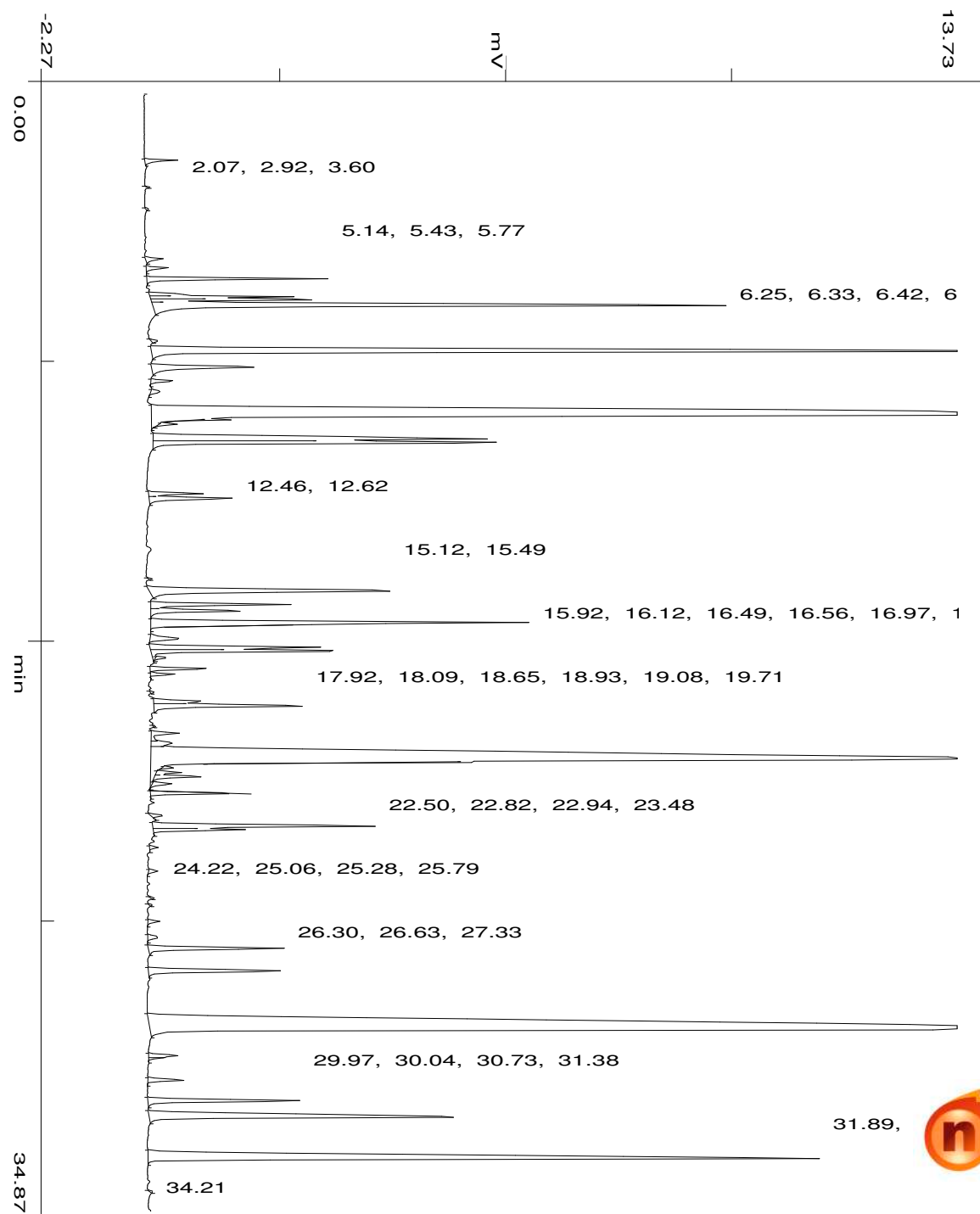
Date: 8 Nov 2023

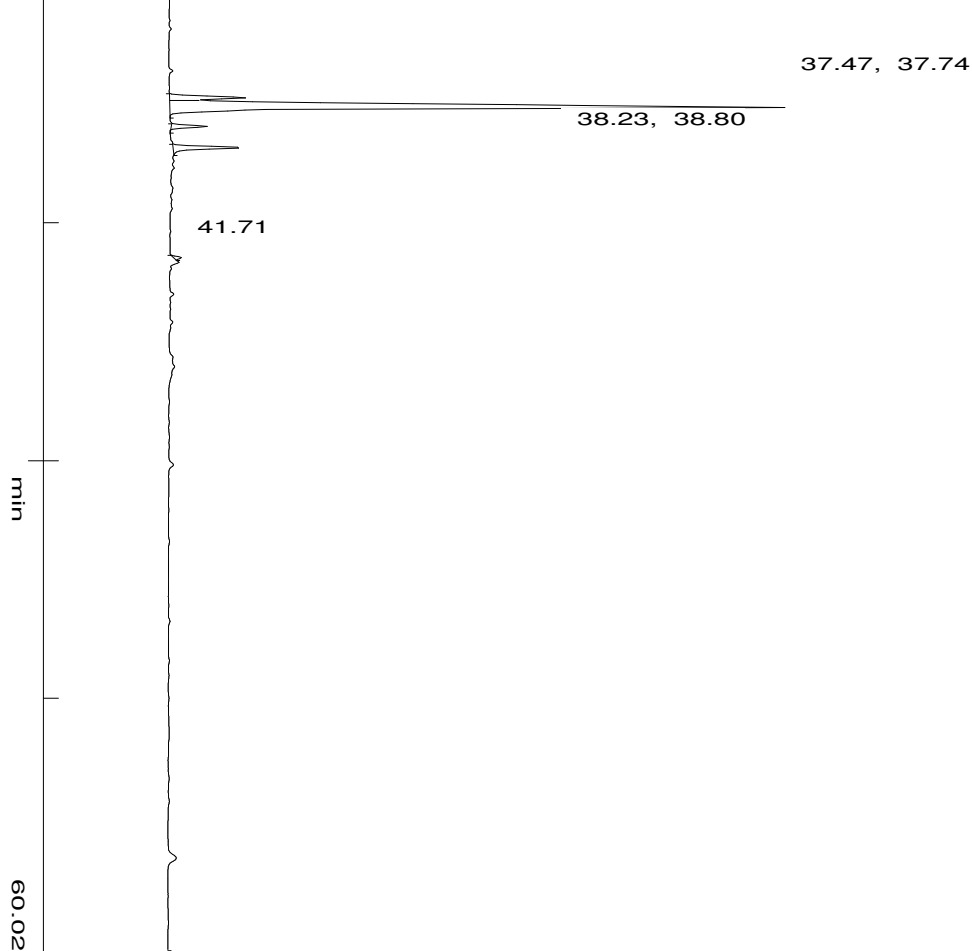
Time: 16:24:14

Run: ch1: 0

Type of Analysis : Percent On Area

Pk.Width	Peak Thrsh.	Area Rej.	Ht.Rej.	Cht.Speed
4	30	5	4	0.50





No.	R.T.	Area	Area %	Pk Ty	Comp Name
1	2.07	26566	0.1420	BB	
2	2.92	1316	0.0070	BB	
3	3.60	1816	0.0097	BB	
4	5.14	17335	0.0927	BB	
5	5.43	19137	0.1023	BB	
6	5.77	141511	0.7565	BB	
7	6.25	25495	0.1363	BV	
8	6.33	98899	0.5287	VV	
9	6.42	140261	0.7498	VV	
10	6.61	687823	3.6769	VB	Benzyl Alcohol
11	7.71	5823	0.0311	BB	
12	8.04	1329715	7.1084	BB	
13	8.52	129882	0.6943	BB	
14	8.96	19773	0.1057	BB	
15	9.28	11112	0.0594	BB	
16	10.04	3091185	16.5248	BB	Benzyl Acetate
17	10.16	20267	0.1083	TTT	
18	10.30	15534	0.0830	TTT	
19	10.76	437258	2.3375	BV	
20	10.89	385539	2.0610	VB	
21	12.46	46159	0.2468	BV	
22	12.62	85857	0.4590	VB	
23	15.12	1834	0.0098	BB	
24	15.49	326309	1.7444	BB	
25	15.92	128113	0.6849	BV	
26	16.12	96901	0.5180	VV	

27	16.49	446876	2.3889	VB	
28	16.56	29444	0.1574	TTT	
29	16.97	41511	0.2219	BP	
30	17.26	158210	0.8458	PV	
31	17.37	199415	1.0660	VB	
32	17.58	9521	0.0509	TTT	
33	17.92	50339	0.2691	BV	
34	18.09	18894	0.1010	VB	
35	18.65	2498	0.0134	BB	
36	18.93	48982	0.2618	BV	
37	19.08	170425	0.9111	VB	
38	19.71	1197	0.0064	BB	
39	19.93	31678	0.1693	BV	
40	20.24	31159	0.1666	VV	
41	20.75	3232470	17.2801	VB	Isoeugenol <methyl->
42	20.84	62789	0.3357	TTT	
43	21.00	9291	0.0497	TTP	
44	21.14	19879	0.1063	TPV	
45	21.28	44634	0.2386	TVT	
46	21.50	20302	0.1085	TTT	
47	21.80	72709	0.3887	PB	
48	22.50	9989	0.0534	BB	
49	22.82	213923	1.1436	BV	
50	22.94	82968	0.4435	VB	
51	23.48	7227	0.0386	BB	
52	24.22	8721	0.0466	BB	
53	25.06	2119	0.0113	BB	
54	25.28	1557	0.0083	BB	
55	25.79	10887	0.0582	BB	
56	26.30	14108	0.0754	BB	
57	26.63	140917	0.7533	BB	
58	27.33	147128	0.7865	BB	
59	29.16	3385192	18.0965	BB	Benzyl Benzoate
60	29.97	26409	0.1412	BV	
61	30.04	9961	0.0533	S	
62	30.73	33525	0.1792	BB	
63	31.38	162598	0.8692	BB	
64	31.89	460896	2.4638	BB	
65	33.18	1078617	5.7660	BB	
66	34.21	2016	0.0108	BB	
67	37.47	65498	0.3501	BV	
68	37.74	756403	4.0436	VB	
69	38.23	26304	0.1406	BB	
70	38.80	60541	0.3236	BB	
71	41.71	5201	0.0278	BB	
		18706347	100.0000		

Summary :

CH- 01
TOTAL PEAKS : 72
MUL. FACTOR : 1.0000
SAMPLE AMT. 100.0000

ISTD AMT. 0.0000000e+00
DILUTION : 1.0000