

REPORT

COMPANY NAME: NISHANT AROMAS PRIVATE LIMITED, HARIDWAR

LOT NO.: ---

Sample Name: Tagetes Minuta Oil DB5

Data File: C:\NuChrom\ch1def00\Tagetes Minuta Oil DB5.DAT

Method File: .MET

Detector: FID.

System: GC

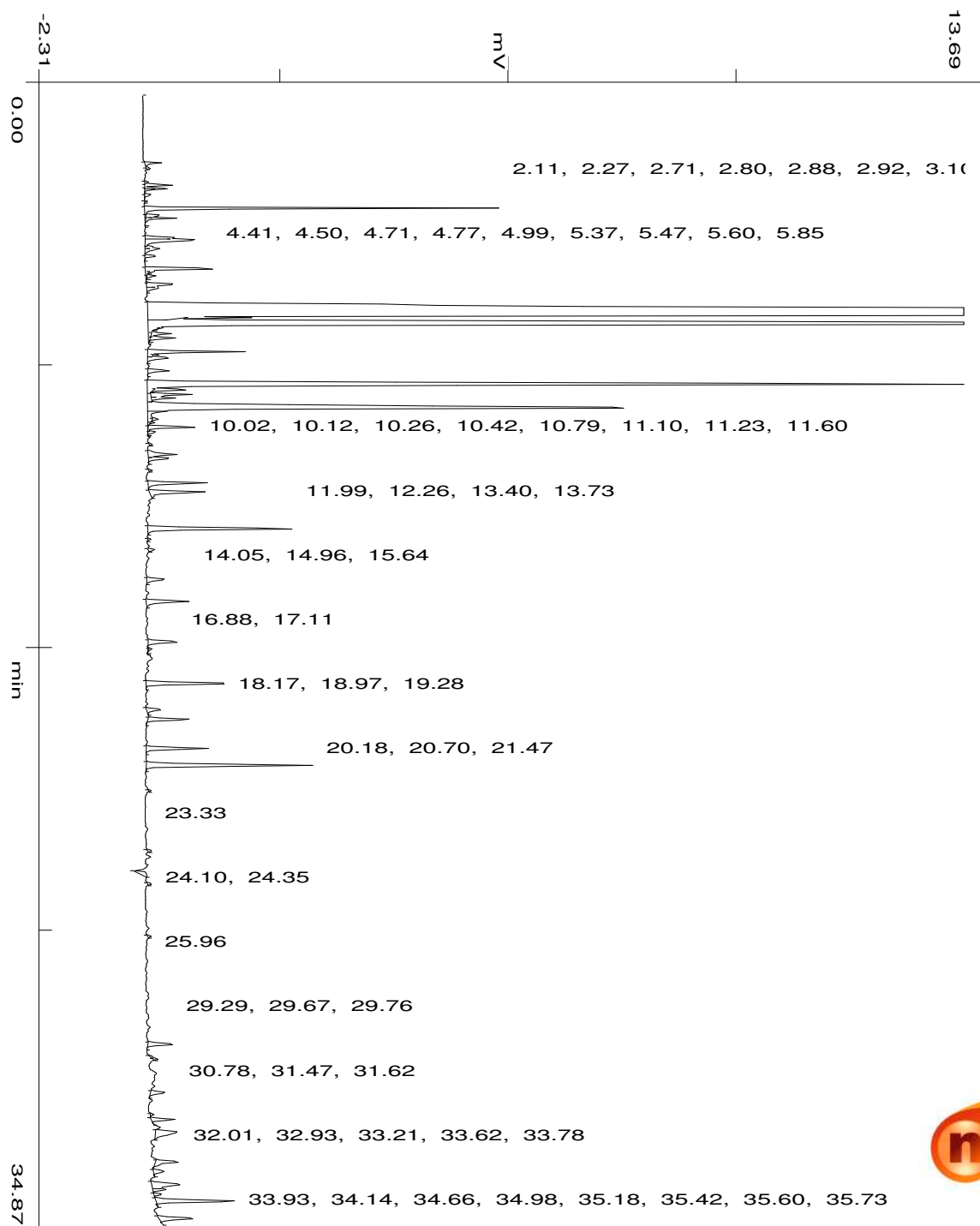
Date: 27 Nov 2023

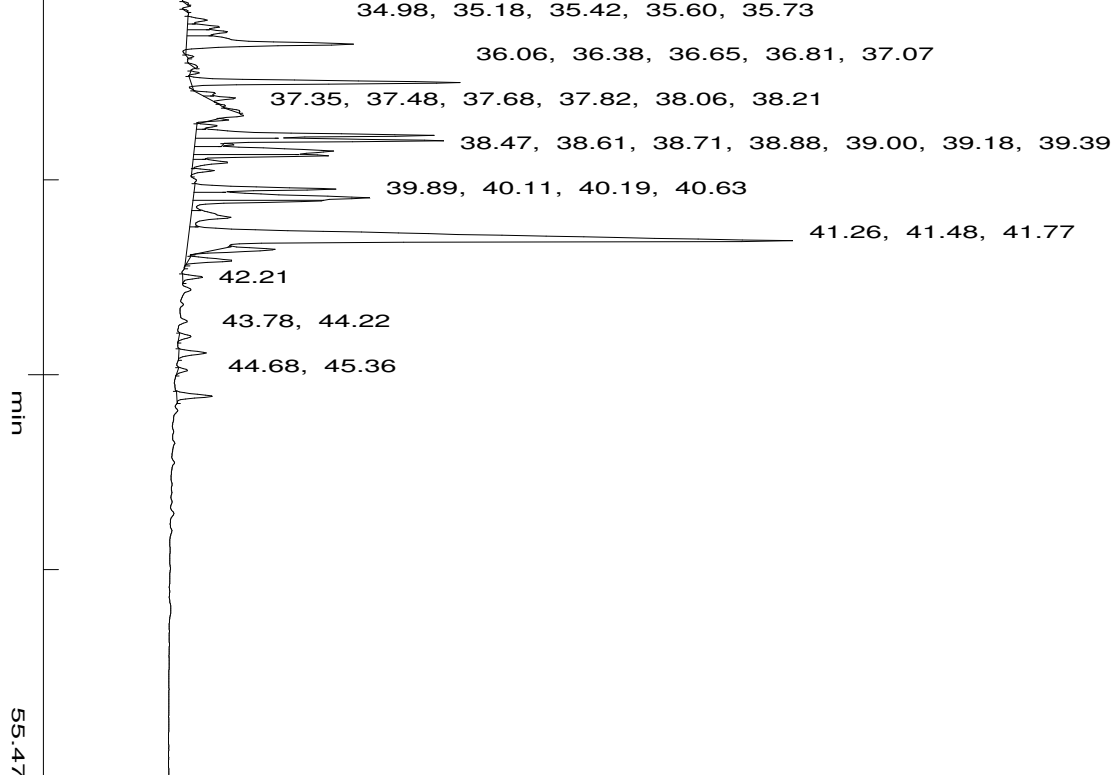
Time: 12:3:18

Run: ch1: 0

Type of Analysis : Percent On Area

Pk.Width	Peak Thrsh.	Area Rej.	Ht.Rej.	Cht.Speed
4	30	5	4	0.50





No.	R.T.	Area	Area %	Pk Ty	Comp Name
1	2.11	9773	0.0560	BP	
2	2.27	2114	0.0121	PB	
3	2.71	2305	0.0132	BV	
4	2.80	17120	0.0982	VV	
5	2.88	4803	0.0275	S	
6	2.92	12200	0.0699	BV	
7	3.10	4705	0.0270	VP	
8	3.29	1276	0.0073	PB	
9	3.51	190074	1.0897	BB	
10	3.73	11183	0.0641	TTV	
11	3.82	18932	0.1085	TVT	
12	4.41	18736	0.1074	BV	
13	4.50	55628	0.3189	VV	
14	4.71	6177	0.0354	VV	
15	4.77	13070	0.0749	VV	
16	4.99	9065	0.0520	VB	
17	5.37	57131	0.3275	BV	
18	5.47	3333	0.0191	TTT	
19	5.60	6076	0.0348	TTT	
20	5.85	25941	0.1487	VV	
21	5.96	12730	0.0730	VB	
22	6.79	8824491	50.5904	BV	Ocimene <(E)-, beta->
23	6.89	34486	0.1977	TTT	
24	7.09	1765963	10.1242	VB	Dihydrotagetone
25	7.20	2401	0.0138	TTT	
26	7.37	14620	0.0838	TTV	
27	7.51	19219	0.1102	TVT	
28	7.94	67669	0.3879	BV	
29	8.04	3122	0.0179	TTT	
30	8.13	20093	0.1152	VB	
31	8.52	17722	0.1016	BB	

32	8.95	869503	4.9848	BV
33	9.11	24354	0.1396	TTT
34	9.26	28281	0.1621	TTV
35	9.36	16610	0.0952	TVT
36	9.67	604296	3.4644	VV
37	9.78	26534	0.1521	S
38	10.02	4545	0.0261	TTP
39	10.12	2559	0.0147	TPP
40	10.26	36270	0.2079	TPV
41	10.42	6099	0.0350	TVT
42	10.79	1798	0.0103	BB
43	11.10	27569	0.1580	BV
44	11.23	18122	0.1039	VB
45	11.60	2187	0.0125	BB
46	11.99	48407	0.2775	BP
47	12.26	51962	0.2979	PB
48	13.40	129894	0.7447	BB
49	13.73	2220	0.0127	BB
50	14.05	4653	0.0267	BB
51	14.96	17927	0.1028	BB
52	15.64	41184	0.2361	BB
53	16.88	26394	0.1513	BB
54	17.11	2880	0.0165	TTT
55	18.17	78309	0.4489	BB
56	18.97	14316	0.0821	BB
57	19.28	35614	0.2042	BB
58	20.18	52729	0.3023	BB
59	20.70	149629	0.8578	BB
60	21.47	1547	0.0089	BB
61	23.33	2453	0.0141	BB
62	24.10	10811	0.0620	BB
63	24.35	2645	0.0152	BB
64	25.96	2156	0.0124	BB
65	29.29	24010	0.1376	BB
66	29.67	1574	0.0090	BV
67	29.76	2591	0.0149	VB
68	30.78	15493	0.0888	BB
69	31.47	2457	0.0141	BP
70	31.62	19026	0.1091	PB
71	32.01	36841	0.2112	BB
72	32.93	24601	0.1410	BP
73	33.21	10627	0.0609	PB
74	33.62	40409	0.2317	BV
75	33.78	10699	0.0613	VP
76	33.93	5981	0.0343	PP
77	34.14	76813	0.4404	PB
78	34.66	34695	0.1989	BB
79	34.98	1547	0.0089	BB
80	35.18	1191	0.0068	BB
81	35.42	20348	0.1167	BV
82	35.60	33129	0.1899	VV
83	35.73	49377	0.2831	VV
84	36.06	237739	1.3629	VP
85	36.38	3587	0.0206	PB
86	36.65	4028	0.0231	BB

87	36.81	5503	0.0315	BP	
88	37.07	258083	1.4796	PP	
89	37.35	14859	0.0852	PV	
90	37.48	23431	0.1343	VP	
91	37.68	1917	0.0110	PP	
92	37.82	5294	0.0304	PB	
93	38.06	6829	0.0392	BP	
94	38.21	17760	0.1018	PV	
95	38.47	234852	1.3464	VV	
96	38.61	235804	1.3519	VV	
97	38.71	4964	0.0285	TTT	
98	38.88	203021	1.1639	VV	
99	39.00	96849	0.5552	VV	
100	39.18	42012	0.2409	VV	
101	39.39	17836	0.1023	VB	
102	39.89	138619	0.7947	BV	
103	40.11	227970	1.3069	VV	
104	40.19	100826	0.5780	S	
105	40.63	76871	0.4407	VV	
106	41.26	1247084	7.1495	VB	Atlantone <(E)-gamma->
107	41.48	64888	0.3720	TTT	
108	41.77	48382	0.2774	TTT	
109	42.21	19146	0.1098	BB	
110	43.78	13813	0.0792	BB	
111	44.22	31835	0.1825	BB	
112	44.68	10064	0.0577	BB	
113	45.36	41115	0.2357	BB	
		17443004	100.0000		

Summary :

CH- 01

TOTAL PEAKS : 113
MUL. FACTOR : 1.0000
SAMPLE AMT. 100.0000
ISTD AMT. 0.0000000e+00
DILUTION : 1.0000