

REPORT

COMPANY NAME: NISHANT AROMAS PRIVATE LIMITED, HARIDWAR

LOT NO.: ---

Sample Name: Sugandh Mantri Oil DB5

Data File: C:\NuChrom\ch1def00\Sugandh Mantri Oil DB5.DAT

Method File: .MET

Detector: FID.

System: GC

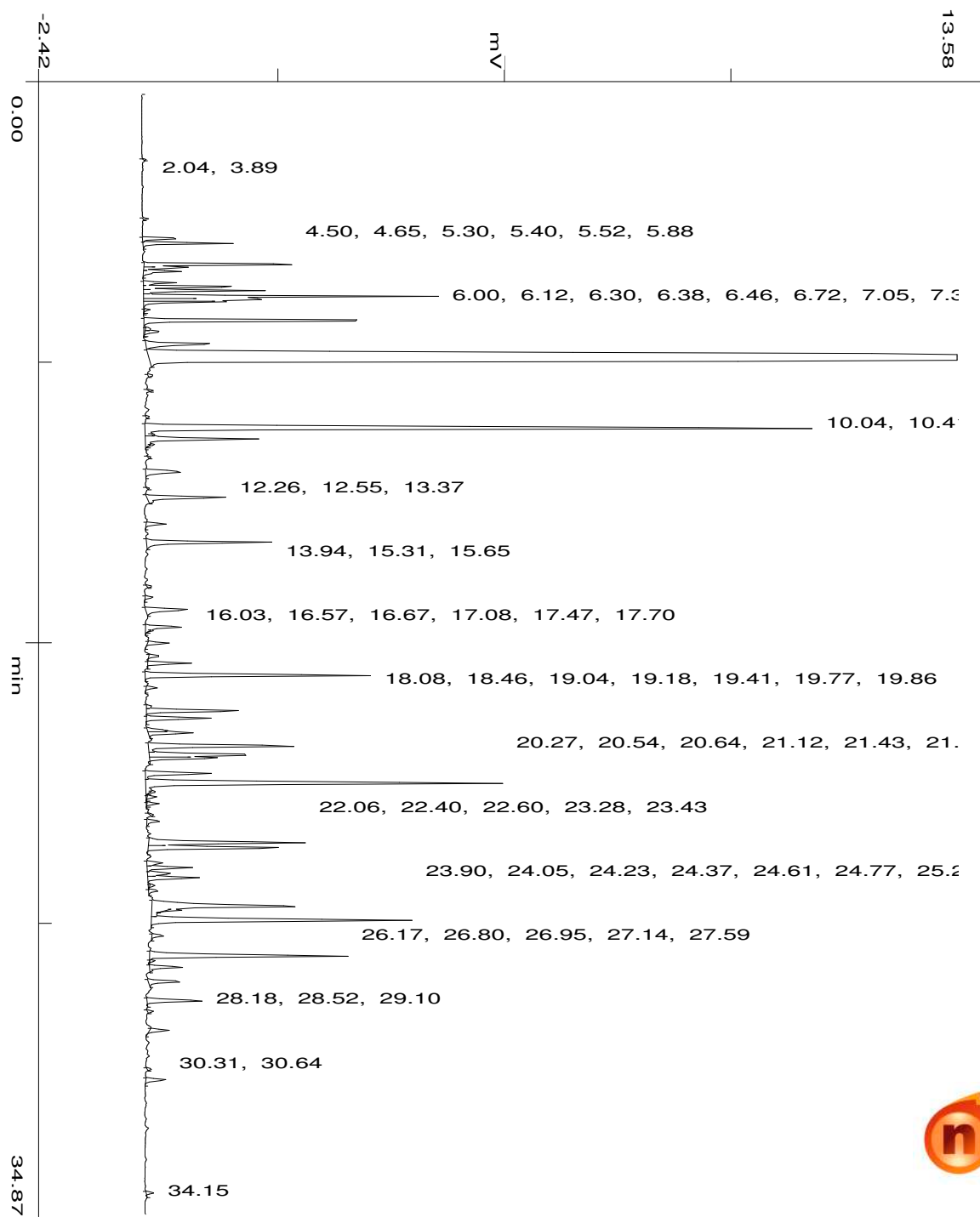
Date: 21 Dec 2023

Time: 12:5:4

Run: ch1: 0

Type of Analysis : Percent On Area

Pk.Width	Peak Thrsh.	Area Rej.	Ht.Rej.	Cht.Speed
4	30	5	4	0.50



min

55.37

No.	R.T.	Area	Area %	Pk Ty	Comp Name
1	3.89	2699	0.0275	BB	
2	4.50	27616	0.2813	BV	
3	4.65	60657	0.6178	VB	
4	5.30	118133	1.2031	BV	
5	5.40	31646	0.3223	VV	
6	5.52	31785	0.3237	VB	
7	5.88	22138	0.2255	BV	
8	6.00	72207	0.7354	VV	
9	6.12	79686	0.8116	VV	
10	6.30	193827	1.9740	VV	
11	6.38	106631	1.0860	VV	
12	6.46	63545	0.6472	VB	
13	6.72	3872	0.0394	TTT	
14	7.05	196361	1.9999	BB	
15	7.30	3975	0.0405	TTV	
16	7.39	14585	0.1485	TVT	
17	7.77	72980	0.7433	BP	
18	8.29	4947564	50.3888	PB	Linalool
19	8.75	3350	0.0341	BB	
20	9.22	2171	0.0221	BB	
21	10.04	2388	0.0243	BB	
22	10.41	738579	7.5221	BV	Terpinen-4-ol
23	10.73	104911	1.0685	VB	
24	10.91	3693	0.0376	TTT	
25	11.30	1599	0.0163	BB	
26	11.77	44690	0.4551	BB	
27	12.26	1077	0.0110	BB	
28	12.55	79595	0.8106	BB	
29	13.37	17025	0.1734	BB	
30	13.94	112229	1.1430	BB	
31	15.31	3252	0.0331	BB	

32	15.65	6678	0.0680	BB
33	16.03	46381	0.4724	BB
34	16.57	35321	0.3597	BB
35	16.67	2716	0.0277	TTT
36	17.08	18076	0.1841	BB
37	17.47	9069	0.0924	BP
38	17.70	34678	0.3532	PB
39	18.08	201200	2.0491	BB
40	18.46	9053	0.0922	BB
41	19.04	5040	0.0513	BV
42	19.18	85622	0.8720	VV
43	19.41	54913	0.5593	VB
44	19.77	14746	0.1502	S
45	19.86	42272	0.4305	BB
46	20.27	141108	1.4371	BV
47	20.54	104128	1.0605	VV
48	20.64	60805	0.6193	VB
49	21.12	61536	0.6267	BV
50	21.43	380151	3.8717	VB
51	21.69	4368	0.0445	TTT
52	21.85	8018	0.0817	TTT
53	22.06	9159	0.0933	TTT
54	22.40	2384	0.0243	BB
55	22.60	12675	0.1291	BB
56	23.28	153229	1.5606	BV
57	23.43	131940	1.3437	VB
58	23.90	14689	0.1496	BV
59	24.05	39859	0.4059	VV
60	24.23	23534	0.2397	VV
61	24.37	50594	0.5153	VV
62	24.61	3755	0.0382	TTT
63	24.77	8284	0.0844	VB
64	25.26	213199	2.1713	BV
65	25.36	11411	0.1162	TTT
66	25.69	282614	2.8783	VB
67	26.17	10728	0.1093	BB
68	26.80	192985	1.9655	BP
69	26.95	2932	0.0299	TTT
70	27.14	31034	0.3161	PB
71	27.59	30636	0.3120	BB
72	28.18	52524	0.5349	BB
73	28.52	4344	0.0442	BB
74	29.10	18177	0.1851	BB
75	30.31	3087	0.0314	BB
76	30.64	19200	0.1955	BB
77	34.15	5458	0.0556	BB
		9818776	100.0000	

Summary :

CH- 01

TOTAL PEAKS : 79
MUL. FACTOR : 1.0000

SAMPLE AMT.	100.0000
ISTD AMT.	0.0000000e+00
DILUTION :	1.0000