

REPORT

COMPANY NAME: NISHANT AROMAS PRIVATE LIMITED, HARIDWAR

LOT NO.: ---

Sample Name: Sugandh Kokila Oil DB5

Data File: C:\NuChrom\ch1def00\Sugandh Kokila Oil DB5.dat

Method File: .MET

Detector: FID.

System: GC

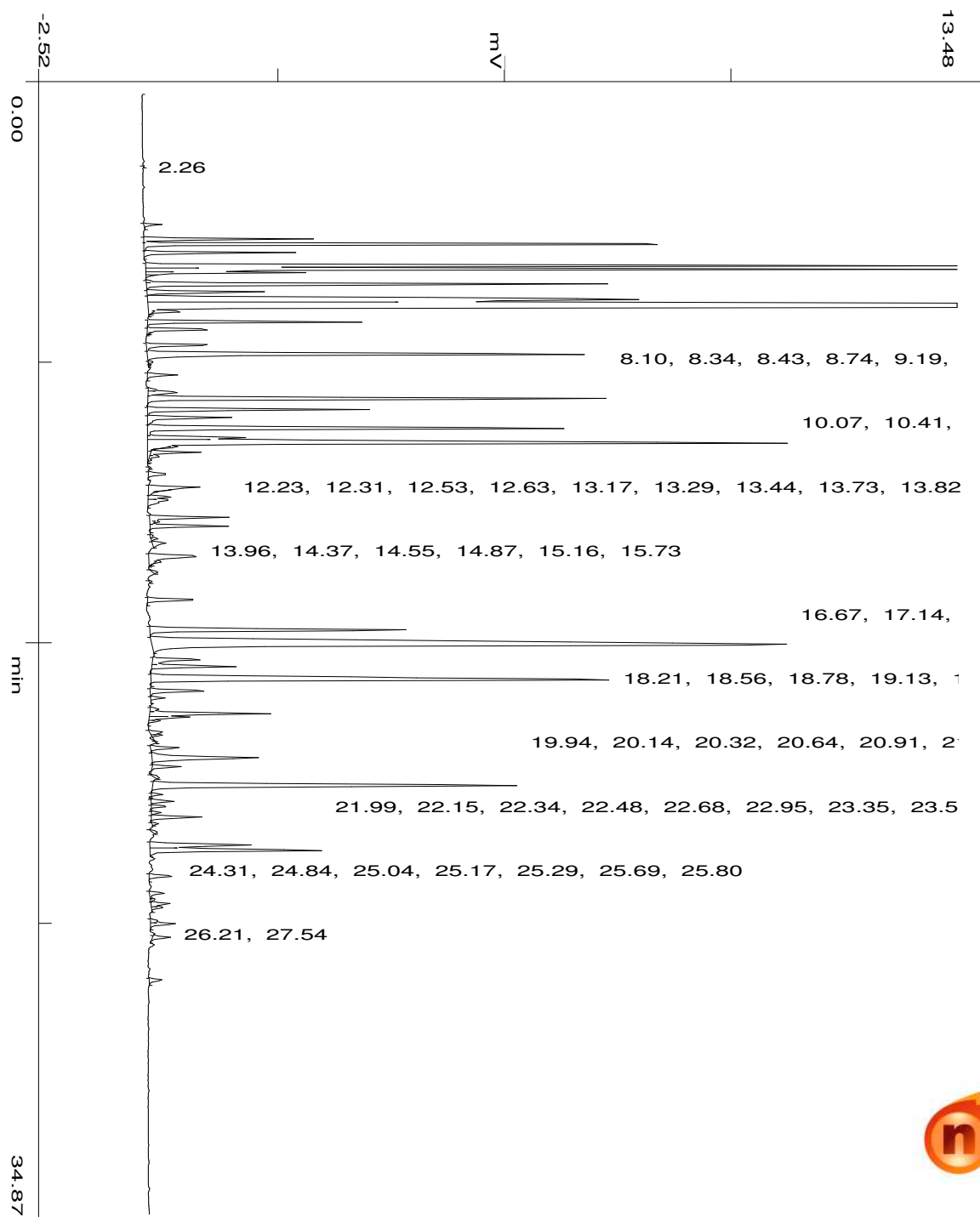
Date: 21 Dec 2023

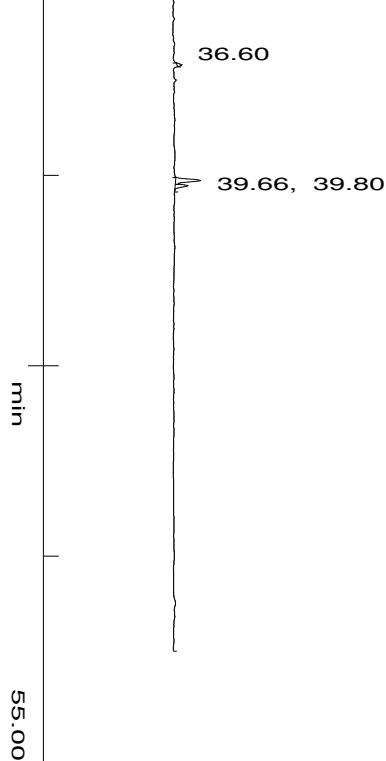
Time: 10:50:28

Run: ch1: 0

Type of Analysis : Percent On Area

Pk.Wdth	Peak Thrsh.	Area Rej.	Ht.Rej.	Cht.Speed
4	30	5	4	0.50





No.	R.T.	Area	Area %	Pk Ty	Comp Name
1	4.07	11391	0.0813	BB	
2	4.52	99736	0.7118	BV	
3	4.68	426208	3.0419	VV	
4	4.94	95458	0.6813	VB	
5	5.35	587616	4.1939	BV	
6	5.46	624811	4.4594	VV	
7	5.55	104408	0.7452	VV	
8	5.64	7087	0.0506	S	
9	5.83	4164	0.0297	PV	
10	5.92	316190	2.2567	VV	
11	6.16	87484	0.6244	VV	
12	6.40	651698	4.6513	VV	
13	6.63	4384300	31.2917	VB	Eucalyptol
14	6.77	20524	0.1465	TTT	
15	7.09	142990	1.0206	BV	
16	7.33	51946	0.3707	VB	
17	7.42	1205	0.0086	TTT	
18	7.81	56085	0.4003	BV	
19	8.10	416227	2.9707	VB	
20	8.34	3450	0.0246	TTV	
21	8.43	1627	0.0116	TVT	
22	8.74	22661	0.1617	BB	
23	9.19	5488	0.0392	BV	
24	9.28	31114	0.2221	VV	
25	9.49	409700	2.9241	VP	
26	9.82	166584	1.1889	PV	
27	10.07	74569	0.5322	VV	
28	10.41	385392	2.7506	VV	
29	10.68	73832	0.5270	VV	
30	10.86	757421	5.4059	VB	
31	10.98	8979	0.0641	TTT	

32	11.14	35227	0.2514	TTV
33	11.27	10737	0.0766	TVT
34	11.62	1372	0.0098	BB
35	11.82	18509	0.1321	BB
36	12.23	60140	0.4292	BV
37	12.31	4317	0.0308	TTT
38	12.53	19120	0.1365	VV
39	12.63	29337	0.2094	VB
40	13.17	68587	0.4895	BV
41	13.29	3580	0.0256	TTT
42	13.44	63365	0.4523	VB
43	13.73	2289	0.0163	BV
44	13.82	4898	0.0350	VP
45	13.96	14466	0.1032	PB
46	14.37	72408	0.5168	BB
47	14.55	5486	0.0392	TTT
48	14.87	4242	0.0303	BB
49	15.16	1498	0.0107	BB
50	15.73	43192	0.3083	BB
51	16.67	246701	1.7608	BP
52	17.14	1190571	8.4974	PB
53	17.58	49513	0.3534	BV
54	17.80	70798	0.5053	VP
55	18.21	606532	4.3290	PB
56	18.56	50471	0.3602	BV
57	18.78	10780	0.0769	VB
58	19.13	7847	0.0560	BV
59	19.27	102139	0.7290	VV
60	19.38	33616	0.2399	VV
61	19.49	9364	0.0668	VB
62	19.84	11618	0.0829	BV
63	19.94	4788	0.0342	VP
64	20.14	1084	0.0077	PB
65	20.32	25509	0.1821	BP
66	20.64	131078	0.9355	PP
67	20.91	22815	0.1628	PP
68	21.26	5399	0.0385	PB
69	21.49	409393	2.9219	BP
70	21.77	6575	0.0469	PP
71	21.99	17893	0.1277	PP
72	22.15	11468	0.0818	PP
73	22.34	7123	0.0508	PP
74	22.48	41870	0.2988	PP
75	22.68	4354	0.0311	PB
76	22.95	4573	0.0326	BB
77	23.35	99633	0.7111	BV
78	23.51	174256	1.2437	VB
79	24.31	22211	0.1585	BB
80	24.84	14887	0.1063	BV
81	25.04	3846	0.0274	VV
82	25.17	17402	0.1242	VV
83	25.29	10252	0.0732	VB
84	25.69	6405	0.0457	BV
85	25.80	23104	0.1649	VB
86	26.21	16558	0.1182	BB

Cinnamate <(E)-, methyl->

87	27.54	12403	0.0885	BB
88	36.60	2973	0.0212	BB
89	39.66	20653	0.1474	BV
90	39.80	9485	0.0677	VB
		14011054	100.0000	

Summary :

CH- 01

TOTAL PEAKS : 91
MUL. FACTOR : 1.0000
SAMPLE AMT. 100.0000
ISTD AMT. 0.0000000e+00
DILUTION : 1.0000