

REPORT

COMPANY NAME : NISHANT AROMAS PRIVATE LIMITED, HARIDWAR

LOT NO.: ---

Sample Name: St. John's Wort Oil DB5

Data File: C:\NuChrom\ch2def00\St. John's Wort Oil DB5.DAT

Method File: C:\NuChrom\NEW01.MET

Detector: FID.

System: GC

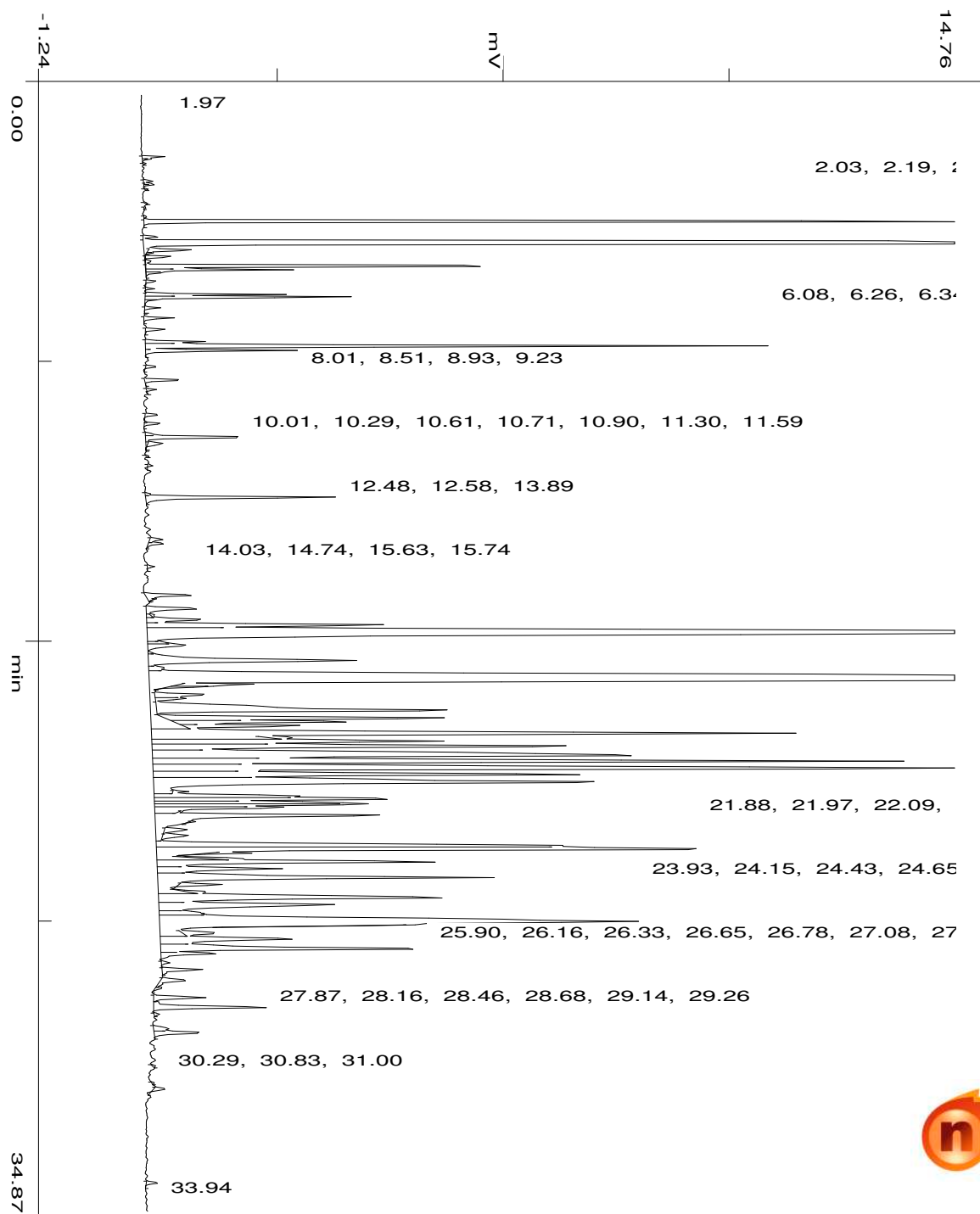
Date: 28 Aug 2023

Time: 14:39:10

Run: ch2: 2

Type of Analysis : Percent On Area

Pk.Width	Peak Thrsh.	Area Rej.	Ht.Rej.	Cht.Speed
4	30	5	4	0.50



min

55.59

No.	R.T.	Area	Area %	Pk Ty	Comp Name
1	1.97	11968	0.0375	BV	
2	2.03	5072	0.0159	VP	
3	2.19	1464	0.0046	PB	
4	2.72	6347	0.0199	BV	
5	2.80	3412	0.0107	VV	
6	2.84	4787	0.0150	VP	
7	2.98	1403	0.0044	PB	
8	3.42	1136	0.0036	BB	
9	3.56	1132	0.0035	BB	
10	3.84	1817	0.0057	BP	
11	3.98	707087	2.2138	PB	
12	4.47	11374	0.0356	BP	
13	4.67	6351454	19.8852	PB	Pinene <alpha->
14	4.88	35580	0.1114	TTV	
15	4.96	4673	0.0146	TVT	
16	5.09	17424	0.0546	TTP	
17	5.21	5538	0.0173	TPV	
18	5.37	282964	0.8859	TVV	
19	5.49	89621	0.2806	TVV	
20	5.56	14679	0.0460	TVT	
21	5.86	6763	0.0212	BP	
22	6.08	4818	0.0151	PV	
23	6.26	79955	0.2503	VV	
24	6.34	146428	0.4584	VV	
25	6.43	8004	0.0251	S	
26	6.68	9764	0.0306	PB	
27	7.00	19887	0.0623	BB	
28	7.35	13896	0.0435	BB	
29	7.73	39935	0.1250	BV	
30	7.87	444700	1.3923	VV	
31	8.01	103815	0.3250	VB	

32	8.51	8217	0.0257	BB	
33	8.93	30093	0.0942	BB	
34	9.23	5312	0.0166	BB	
35	10.01	10904	0.0341	BV	
36	10.29	13305	0.0417	VB	
37	10.61	6239	0.0195	BV	
38	10.71	91359	0.2860	VB	
39	10.90	16488	0.0516	TTT	
40	11.30	1673	0.0052	BB	
41	11.59	1618	0.0051	BB	
42	12.48	4015	0.0126	BV	
43	12.58	166792	0.5222	VB	
44	13.89	12366	0.0387	BV	
45	14.03	15084	0.0472	VB	
46	14.74	4829	0.0151	BB	
47	15.63	48682	0.1524	BB	
48	15.74	2422	0.0076	TTT	
49	16.04	60767	0.1903	BV	
50	16.25	2606	0.0082	TTT	
51	16.39	61388	0.1922	VV	
52	16.56	233259	0.7303	VV	
53	16.84	2808637	8.7933	VV	trans-Geranyl acetate
54	17.09	13676	0.0428	S	
55	17.20	52847	0.1655	VV	
56	17.67	294929	0.9234	VV	
57	17.91	20961	0.0656	VV	
58	18.29	5841677	18.2892	VV	Caryophyllene <(E)->
59	18.41	55635	0.1742	TTV	
60	18.47	30942	0.0969	TVT	
61	18.72	56022	0.1754	TTV	
62	18.85	28590	0.0895	TVP	
63	19.22	467564	1.4639	TPP	
64	19.46	272798	0.8541	TPV	
65	19.57	161623	0.5060	TVV	
66	19.70	96616	0.3025	TVT	
67	19.95	897635	2.8103	VV	
68	20.06	16725	0.0524	TTT	
69	20.17	353881	1.1079	VV	
70	20.33	492752	1.5427	VV	
71	20.62	838898	2.6264	VV	
72	20.81	793574	2.4845	VV	
73	21.02	1159111	3.6290	VV	
74	21.21	523459	1.6389	VV	
75	21.45	809497	2.5344	VV	
76	21.75	10464	0.0328	TTT	
77	21.88	133989	0.4195	VV	
78	21.97	241350	0.7556	VV	
79	22.09	132857	0.4160	VV	
80	22.14	201800	0.6318	VV	
81	22.24	145525	0.4556	VV	
82	22.36	3234	0.0101	TTT	
83	22.49	375992	1.1772	VV	
84	22.68	4513	0.0141	TTT	
85	22.92	27530	0.0862	TTV	
86	23.11	30302	0.0949	TVT	

87	23.42	400583	1.2542	VV
88	23.54	874215	2.7370	VV
89	23.65	32742	0.1025	TTT
90	23.83	22151	0.0694	TTT
91	23.93	304353	0.9529	VV
92	24.15	149787	0.4690	VV
93	24.43	512438	1.6043	VV
94	24.65	34938	0.1094	TTP
95	24.86	14591	0.0457	TPT
96	25.05	429270	1.3440	VV
97	25.27	267823	0.8385	VV
98	25.51	55314	0.1732	S
99	25.79	1197982	3.7507	BV
100	25.90	33924	0.1062	TTT
101	26.16	36011	0.1127	TTT
102	26.33	199991	0.6261	VV
103	26.65	335141	1.0493	VV
104	26.78	61033	0.1911	VP
105	27.08	6382	0.0200	PV
106	27.29	37401	0.1171	VB
107	27.63	34579	0.1083	BV
108	27.87	7406	0.0232	VB
109	28.16	48430	0.1516	BV
110	28.46	116177	0.3637	VP
111	28.68	3934	0.0123	PB
112	29.14	19156	0.0600	BV
113	29.26	50471	0.1580	VB
114	30.29	1954	0.0061	BB
115	30.83	1513	0.0047	BB
116	31.00	10817	0.0339	BB
117	33.94	10154	0.0318	BB
		31940581	100.0000	

**Summary :**

**TOTAL PEAKS :** 117  
**MUL. FACTOR :** 1.0000  
**SAMPLE AMT.** 100.0000  
**ISTD AMT.** 0.0000000e+00  
**DILUTION :** 1.0000