

REPORT

COMPANY NAME: NISHANT AROMAS PRIVATE LIMITED, HARIDWAR

LOT NO.: RRONAPL0623

Sample Name: Ruh Rose Oil DB5

Data File: C:\NuChrom\ch1def00\Ruh Rose Oil DB5.dat

Method File:

Detector: FID.

System: GC

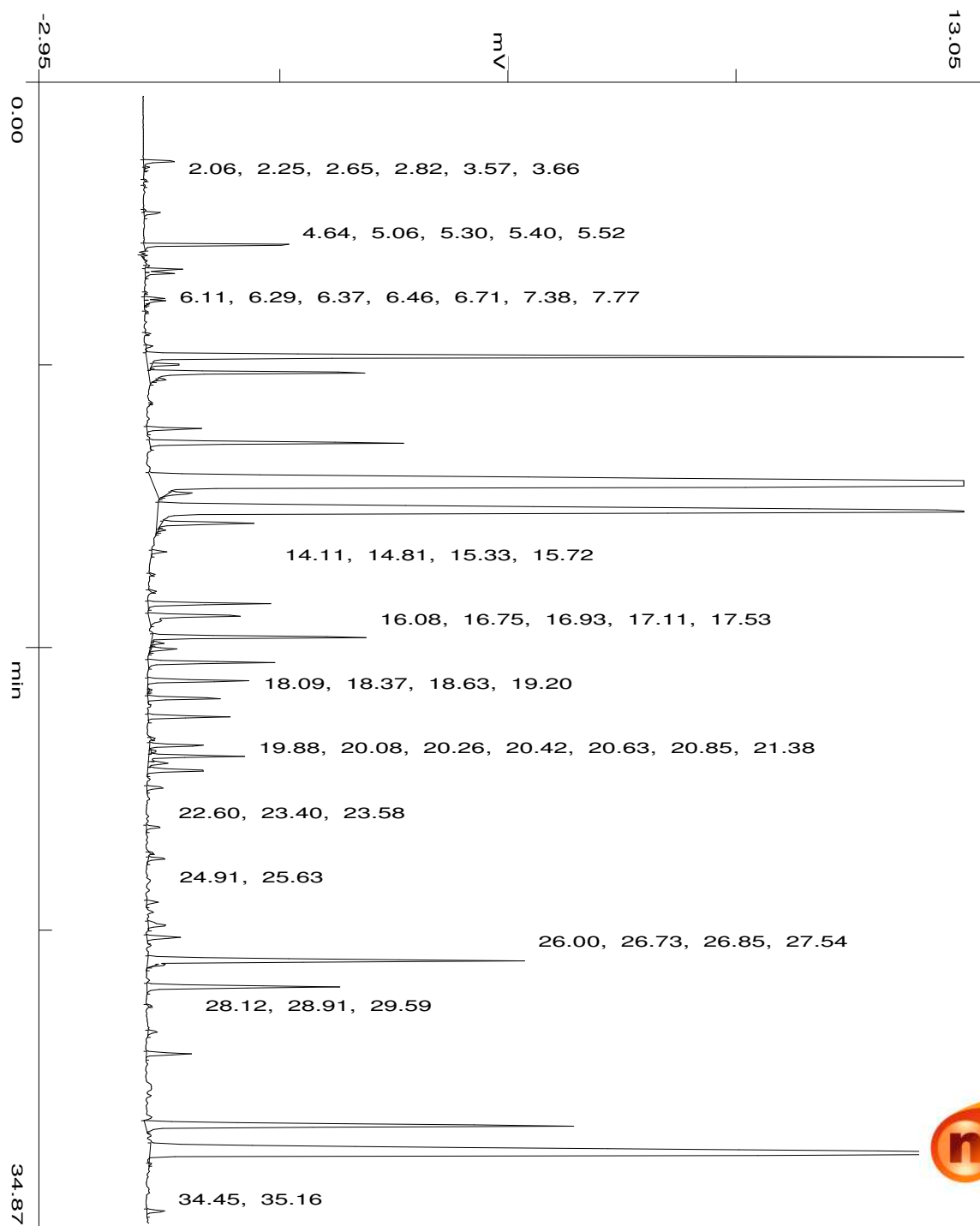
Date: 13 Jan 2024

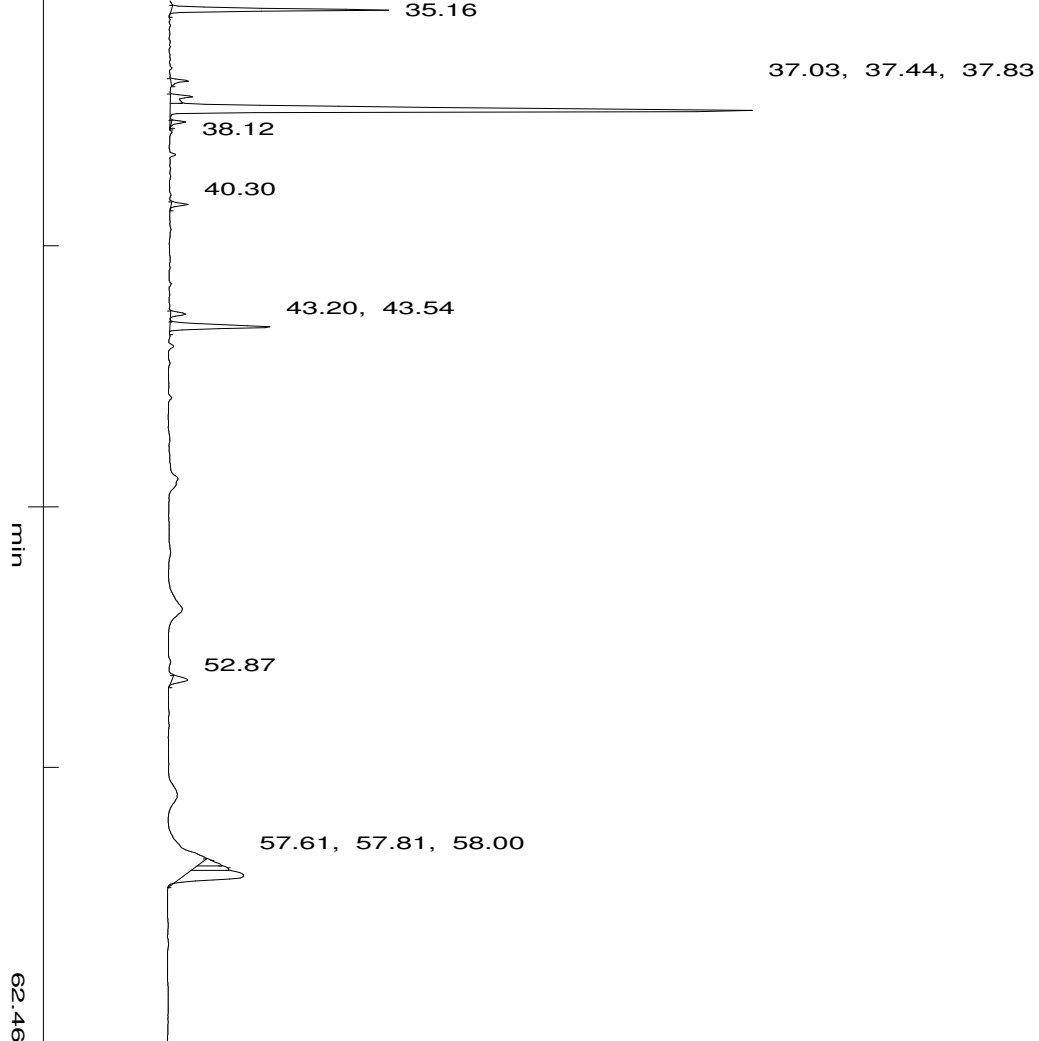
Time: 15:0:20

Run: ch1: 4

Type of Analysis : Percent On Area

Pk.Wdth	Peak Thrsh.	Area Rej.	Ht.Rej.	Cht.Speed
4	30	5	4	0.50





No.	R.T.	Area	Area %	Pk Ty	Comp Name
1	2.06	30189	0.2179	BB	
2	2.25	2184	0.0158	TTT	
3	2.65	1377	0.0099	BB	
4	3.57	1647	0.0119	BV	
5	3.66	12810	0.0925	VB	
6	4.64	118590	0.8559	BB	
7	5.06	1831	0.0132	BB	
8	5.30	2607	0.0188	BP	
9	5.40	25918	0.1871	PV	
10	5.52	22387	0.1616	VB	
11	6.11	1580	0.0114	BB	
12	6.29	13710	0.0989	BV	
13	6.37	16857	0.1217	VB	
14	6.46	1209	0.0087	TTT	
15	6.71	1337	0.0096	BB	
16	7.38	2843	0.0205	BB	
17	7.77	5106	0.0369	BP	
18	8.12	884664	6.3849	PV	
19	8.34	23673	0.1709	TTT	
20	8.59	229110	1.6536	VB	
21	8.79	6961	0.0502	TTT	
22	9.53	1484	0.0107	BB	
23	10.31	43650	0.3150	BB	
24	10.75	230395	1.6628	BB	

25	12.08	3948033	28.4943	BB	Citronellol
26	12.31	23573	0.1701	TTT	
27	12.90	2110213	15.2301	BB	Geraniol
28	13.23	84448	0.6095	TTT	
29	13.44	4895	0.0353	TTT	
30	14.11	11604	0.0837	BB	
31	14.81	2856	0.0206	BB	
32	15.33	3650	0.0263	BB	
33	15.72	97439	0.7032	BB	
34	16.08	109894	0.7931	BB	
35	16.75	201481	1.4542	BB	
36	16.93	8308	0.0600	TTT	
37	17.11	21515	0.1553	TTT	
38	17.53	107650	0.7769	BB	
39	18.09	91929	0.6635	BB	
40	18.37	2185	0.0158	TTT	
41	18.63	63857	0.4609	BB	
42	19.20	66180	0.4776	BB	
43	19.88	3113	0.0225	BB	
44	20.08	52195	0.3767	BV	
45	20.26	3672	0.0265	TTT	
46	20.42	81662	0.5894	VV	
47	20.63	20954	0.1512	VV	
48	20.85	60458	0.4363	VB	
49	21.38	15190	0.1096	BB	
50	22.60	12981	0.0937	BB	
51	23.40	1902	0.0137	BB	
52	23.58	15002	0.1083	BB	
53	24.91	10613	0.0766	BB	
54	25.63	21979	0.1586	BB	
55	26.00	33188	0.2395	BB	
56	26.73	403230	2.9102	BB	
57	26.85	8347	0.0602	TTT	
58	27.54	185779	1.3408	BB	
59	28.12	2259	0.0163	BB	
60	28.91	9007	0.0650	BB	
61	29.59	38576	0.2784	BB	
62	31.82	502555	3.6271	BB	
63	32.71	2408855	17.3855	BP	
64	32.98	1747	0.0126	PB	
65	34.45	16727	0.1207	BB	
66	35.16	166885	1.2045	BB	
67	37.03	14704	0.1061	BB	
68	37.44	28559	0.2061	BV	
69	37.83	706189	5.0968	VB	
70	38.12	10785	0.0778	TTT	
71	40.30	13667	0.0986	BB	
72	43.20	14726	0.1063	BV	
73	43.54	113771	0.8211	VB	
74	52.87	23498	0.1696	BB	
75	57.61	23987	0.1731	S	
76	57.81	36271	0.2618	S	
77	58.00	150665	1.0874	BB	

**Summary :**

**CH- 01**

<b>TOTAL PEAKS :</b>	<b>78</b>
<b>MUL. FACTOR :</b>	<b>1.0000</b>
<b>SAMPLE AMT.</b>	<b>100.0000</b>
<b>ISTD AMT.</b>	<b>0.0000000e+00</b>
<b>DILUTION :</b>	<b>1.0000</b>