

REPORT

COMPANY NAME: NISHANT AROMAS PRIVATE LIMITED, HARIDWAR

LOT NO.: -----

Sample Name: Ruh Motia Oil DB5

Data File: C:\NuChrom\Ruh Motia Oil DB502.DAT

Method File:

Detector: FID.

System: GC

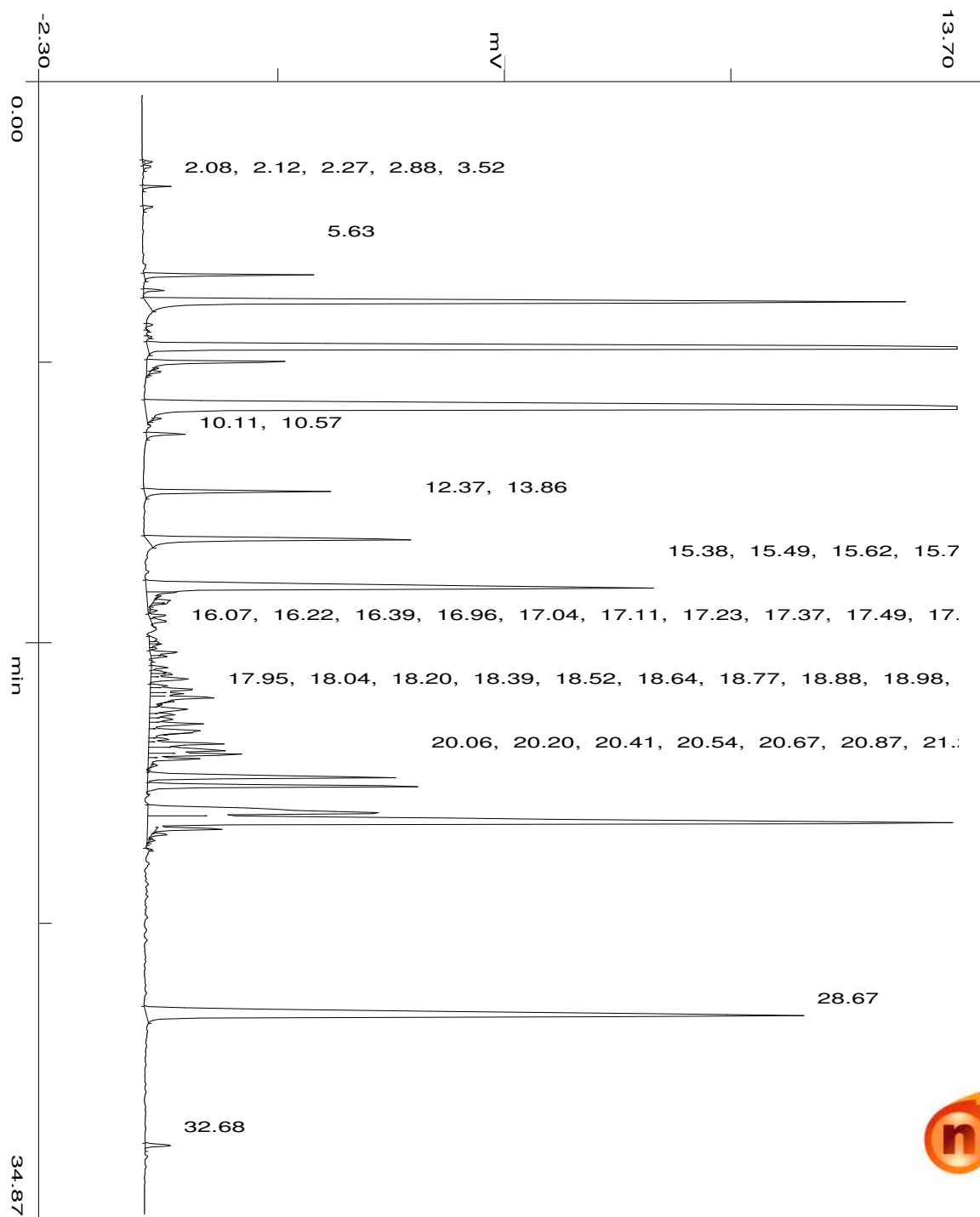
Date: 26 Sep 2023

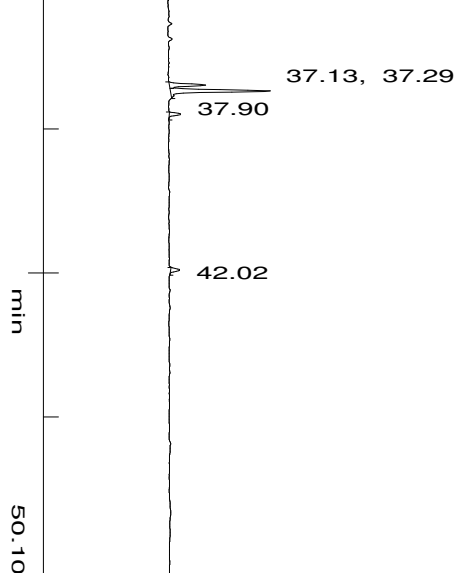
Time: 17:24:38

Run: ch1: 6

Type of Analysis : Percent On Area

Pk.Width	Peak Thrsh.	Area Rej.	Ht.Rej.	Cht.Speed
4	30	5	4	0.50





No.	R.T.	Area	Area %	Pk Ty	Comp Name
1	2.08	1464	0.0117	BV	
2	2.12	7666	0.0613	VV	
3	2.27	6243	0.0499	VB	
4	2.88	16192	0.1295	BB	
5	3.52	9297	0.0744	BB	
6	5.63	111426	0.8915	BB	
7	6.11	16232	0.1299	BP	
8	6.49	990007	7.9207	PB	
9	7.18	4549	0.0364	BP	
10	7.37	1056	0.0084	PB	
11	7.56	2075	0.0166	BB	
12	7.93	1872487	14.9812	BB	Linalool
13	8.33	155360	1.2430	BB	
14	8.54	2696	0.0216	TTP	
15	8.65	9798	0.0784	TPT	
16	9.80	2691518	21.5340	BB	Benzyl Acetate
17	10.11	5906	0.0473	TTT	
18	10.57	34258	0.2741	BB	
19	12.37	159672	1.2775	BB	
20	13.86	323076	2.5848	BB	
21	15.38	865264	6.9227	BV	
22	15.49	61041	0.4884	S	
23	15.62	2165	0.0173	TTV	
24	15.76	14822	0.1186	TVV	
25	15.83	13238	0.1059	TVT	
26	16.07	5367	0.0429	TTT	
27	16.22	15345	0.1228	PV	
28	16.39	17853	0.1428	VB	
29	16.96	9431	0.0755	BV	
30	17.04	6597	0.0528	VV	
31	17.11	10372	0.0830	VV	
32	17.23	5456	0.0437	VP	
33	17.37	26747	0.2140	PV	
34	17.49	12081	0.0967	VB	
35	17.83	13630	0.1090	BV	
36	17.95	10155	0.0812	S	

37	18.04	19976	0.1598	BV
38	18.20	45917	0.3674	VP
39	18.39	14115	0.1129	PV
40	18.52	51258	0.4101	VV
41	18.64	31253	0.2500	VV
42	18.77	96831	0.7747	VV
43	18.88	4572	0.0366	TTT
44	18.98	1885	0.0151	TTT
45	19.13	50320	0.4026	VV
46	19.29	27846	0.2228	VV
47	19.43	26777	0.2142	VV
48	19.59	58128	0.4651	VV
49	19.79	82658	0.6613	VV
50	19.85	4959	0.0397	TTT
51	20.06	20172	0.1614	VV
52	20.20	79937	0.6396	VV
53	20.41	104831	0.8387	VV
54	20.54	86152	0.6893	VV
55	20.67	55234	0.4419	VV
56	20.87	5497	0.0440	TTT
57	21.25	302506	2.4203	VV
58	21.53	280669	2.2455	VB
59	22.36	461968	3.6961	BV
60	22.68	1547022	12.3772	VB
61	22.85	58420	0.4674	TTV
62	23.02	13898	0.1112	TVT
63	23.21	4284	0.0343	TTT
64	23.49	1953	0.0156	BB
65	28.67	1310330	10.4835	BB
66	32.68	24357	0.1949	BB
67	37.13	25611	0.2049	BV
68	37.29	72695	0.5816	VB
69	37.90	8563	0.0685	BB
70	42.02	7792	0.0623	BB
		12498928	100.0000	

Summary :

CH- 01

TOTAL PEAKS : 70
MUL. FACTOR : 1.0000
SAMPLE AMT. 100.0000
ISTD AMT. 0.0000000e+00
DILUTION : 1.0000