

REPORT

COMPANY NAME : NISHANT AROMAS PRIVATE LIMITED, HARIDWAR

LOT NO.: -----

Sample Name: Ruh Khus Oil DB5

Data File: C:\NuChrom\ch2def00\Ruh Khus Oil DB5.DAT

Method File: NEW01.MET

Detector: FID.

System: GC

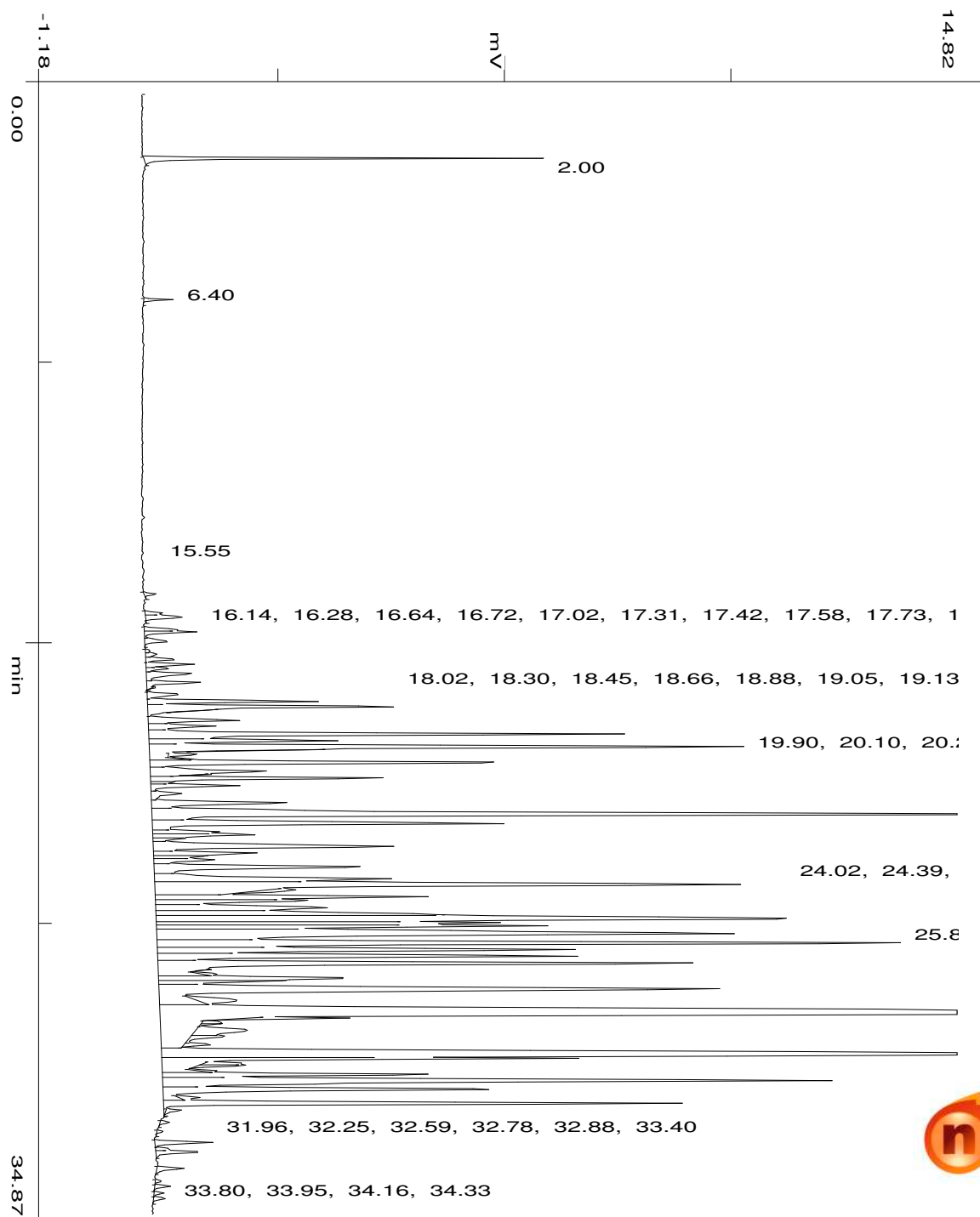
Date: 23 Aug 2023

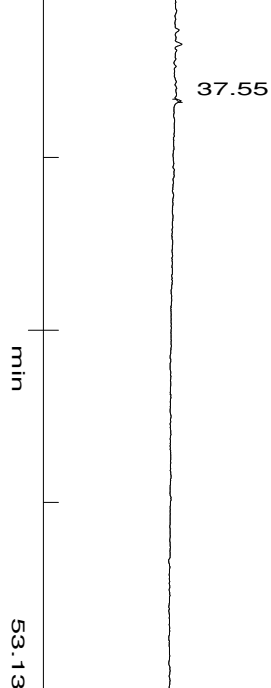
Time: 14:48:0

Run: ch1: 0

Type of Analysis : Percent On Area

Pk.Width	Peak Thrsh.	Area Rej.	Ht.Rej.	Cht.Speed
4	30	5	4	0.50





No.	R.T.	Area	Area %	Pk Ty	Comp Name
1	2.00	225818	0.8378	BB	
2	6.40	18757	0.0696	BB	
3	15.55	10250	0.0380	BB	
4	16.14	15513	0.0576	BV	
5	16.28	46140	0.1712	VB	
6	16.64	27154	0.1007	BV	
7	16.72	48600	0.1803	VV	
8	17.02	30296	0.1124	VB	
9	17.31	3952	0.0147	BV	
10	17.42	12759	0.0473	VV	
11	17.58	30894	0.1146	VV	
12	17.73	42524	0.1578	VV	
13	17.86	23571	0.0875	VV	
14	18.02	61752	0.2291	VV	
15	18.30	54110	0.2008	VV	
16	18.45	3386	0.0126	TTT	
17	18.66	41500	0.1540	VV	
18	18.88	153682	0.5702	VV	
19	19.05	312400	1.1591	VV	
20	19.13	7294	0.0271	TTT	
21	19.47	105638	0.3919	VV	
22	19.66	80602	0.2991	VV	
23	19.90	525340	1.9491	VV	
24	20.10	200438	0.7437	VV	
25	20.29	796241	2.9542	VB	
26	20.37	17678	0.0656	TTT	
27	20.54	23485	0.0871	TTP	
28	20.66	2899	0.0108	TS	
29	20.79	396065	1.4695	BV	
30	21.06	187986	0.6975	VV	
31	21.15	8439	0.0313	TTT	
32	21.27	224733	0.8338	VV	
33	21.40	18065	0.0670	S	

34	21.50	90655	0.3364	VV	
35	21.75	43883	0.1628	VV	
36	22.03	180252	0.6688	VV	
37	22.40	1535063	5.6955	VV	
38	22.68	454526	1.6864	VV	
39	22.93	64528	0.2394	VV	
40	23.03	110384	0.4096	VV	
41	23.15	29265	0.1086	S	
42	23.39	340931	1.2649	VV	
43	23.60	108204	0.4015	VV	
44	23.69	47439	0.1760	S	
45	23.81	73898	0.2742	VV	
46	24.02	302974	1.1241	VV	
47	24.39	324171	1.2028	VV	
48	24.57	1079062	4.0036	VV	
49	24.74	49088	0.1821	TTT	
50	24.96	307605	1.1413	VV	
51	25.06	194243	0.7207	VV	
52	25.29	263485	0.9776	VV	
53	25.49	334445	1.2409	S	
54	25.63	1031749	3.8280	BV	
55	25.76	337713	1.2530	VV	
56	25.86	404218	1.4997	VV	
57	26.09	1119332	4.1530	VV	
58	26.40	983988	3.6508	VV	
59	26.60	531083	1.9704	VV	
60	26.79	508351	1.8861	VV	
61	27.02	760588	2.8220	VV	
62	27.21	4143	0.0154	TTT	
63	27.35	11922	0.0442	TTT	
64	27.48	233316	0.8657	VV	
65	27.56	115467	0.4284	S	
66	27.83	1036142	3.8443	VV	
67	28.19	68387	0.2537	TTT	
68	28.61	4616056	17.1267	VV	Khusimol
69	28.72	73270	0.2718	TTT	
70	28.84	14594	0.0541	TTV	
71	28.90	13764	0.0511	TVV	
72	29.10	109620	0.4067	TVV	
73	29.28	44448	0.1649	TVV	
74	29.55	25387	0.0942	TVT	
75	29.88	2200090	8.1629	VV	
76	29.97	517364	1.9195	VV	
77	30.12	31597	0.1172	TTV	
78	30.20	41603	0.1544	TVP	
79	30.36	8530	0.0316	TPT	
80	30.47	280380	1.0403	VV	
81	30.67	919244	3.4106	VV	
82	30.94	437014	1.6214	VV	
83	31.19	16856	0.0625	TTT	
84	31.38	546013	2.0258	VB	
85	31.58	16136	0.0599	TTT	
86	31.96	9676	0.0359	BB	
87	32.25	4746	0.0176	BB	
88	32.59	56502	0.2096	BV	

89	32.78	11920	0.0442	VV
90	32.88	47374	0.1758	VB
91	33.40	29639	0.1100	BB
92	33.80	5416	0.0201	BV
93	33.95	14781	0.0548	VV
94	34.16	8576	0.0318	VV
95	34.33	11728	0.0435	VB
96	37.55	1618	0.0060	BB
		26952403	100.0000	

Summary :

TOTAL PEAKS : 96
MUL. FACTOR : 1.0000
SAMPLE AMT. 100.0000
ISTD AMT. 0.0000000e+00
DILUTION : 1.0000