

REPORT

COMPANY NAME : NISHANT AROMAS PRIVATE LIMITED, HARIDWAR

LOT NO.: ----

Sample Name: Rosemary Oil DB5

Data File: C:\NuChrom\ch2def00\Rosemary Oil DB5. dat

Method File: C:\NuChrom\NEW01.MET

Detector: FID.

System: GC

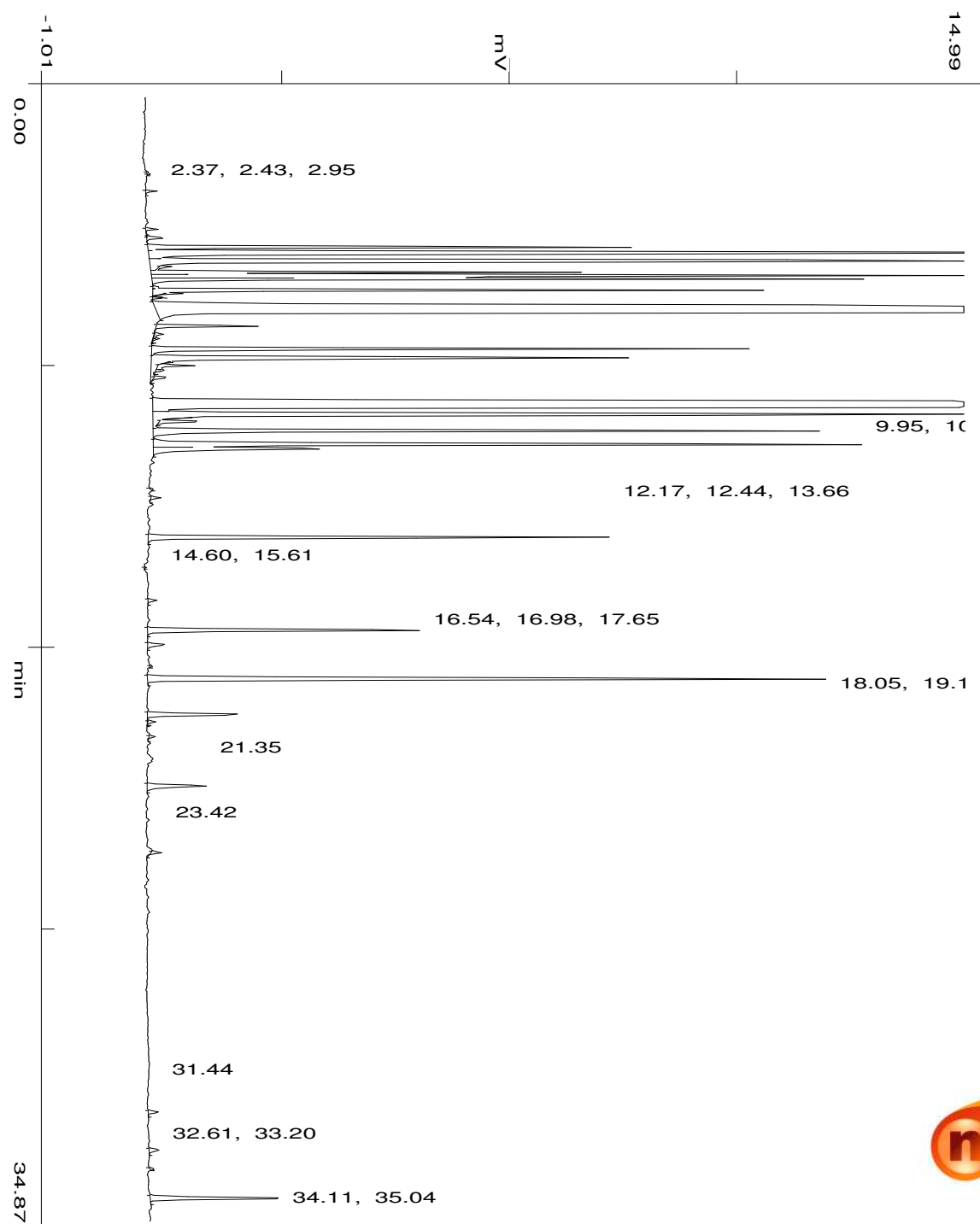
Date: 19 Apr 2023

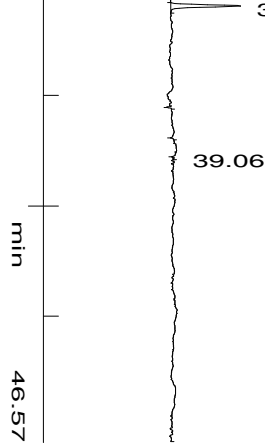
Time: 15:22:2

Run: ch2: 4

Type of Analysis : Percent On Area

Pk.Width	Peak Thrsh.	Area Rej.	Ht.Rej.	Cht.Speed
4	30	5	4	0.50





No.	R.T.	Area	Area %	Pk Ty	Comp Name
1	2.37	1063	0.0034	BV	
2	2.43	1493	0.0048	VB	
3	2.95	6287	0.0200	BB	
4	4.12	7908	0.0252	BV	
5	4.33	1563	0.0050	VP	
6	4.40	12947	0.0412	PP	
7	4.68	339690	1.0822	PV	
8	4.86	3462350	11.0303	VV	Pinene <alpha->
9	5.11	1537053	4.8967	VV	Camphene
10	5.29	9293	0.0296	TTT	
11	5.46	254214	0.8099	VV	
12	5.56	996741	3.1754	VV	
13	5.66	463248	1.4758	VP	
14	5.92	3191	0.0102	PV	
15	6.01	448596	1.4291	VP	
16	6.12	11322	0.0361	TTT	
17	6.24	7205	0.0230	PP	
18	6.68	11538265	36.7583	PB	Eucalyptol
19	7.12	74859	0.2385	BB	
20	7.37	7605	0.0242	TTV	
21	7.52	4547	0.0145	TVT	
22	7.83	405175	1.2908	BV	
23	8.11	470564	1.4991	VB	
24	8.24	4527	0.0144	TTP	
25	8.35	26958	0.0859	TPV	
26	8.50	6848	0.0218	TVT	
27	8.72	11232	0.0358	TTT	
28	9.62	7377873	23.5042	BV	Camphor
29	9.86	905861	2.8859	VV	
30	9.95	4072	0.0130	TTT	
31	10.08	33376	0.1063	TTT	
32	10.37	542555	1.7285	VV	
33	10.79	619548	1.9737	VV	
34	10.92	187533	0.5974	VB	
35	12.17	1544	0.0049	BB	
36	12.44	6253	0.0199	BB	
37	13.66	367665	1.1713	BB	
38	15.61	6869	0.0219	BB	
39	16.54	246311	0.7847	BB	
40	16.98	17810	0.0567	BB	

41	17.65	1571	0.0050	BB
42	18.05	593740	1.8915	BB
43	19.15	85112	0.2711	BB
44	19.37	5810	0.0185	TTT
45	19.83	4137	0.0132	BB
46	21.35	59049	0.1881	BB
47	23.42	7687	0.0245	BB
48	31.44	8300	0.0264	BB
49	32.61	9843	0.0314	BB
50	33.20	2599	0.0083	BB
51	34.11	130291	0.4151	BB
52	35.04	49410	0.1574	BB
		31389563	100.0000	

Summary :

TOTAL PEAKS : 55
MUL. FACTOR : 1.0000
SAMPLE AMT. 100.0000
ISTD AMT. 0.0000000e+00
DILUTION : 1.0000