

REPORT

COMPANY NAME : NISHANT AROMAS PRIVATE LIMITED, HARIDWAR

LOT NO.: ---

Sample Name: Rose Oil (M) DB5

Data File: C:\NuChrom\ch2def00\Rose Oil (M) DB5.DAT

Method File: NEW01.MET

Detector: FID.

System: GC

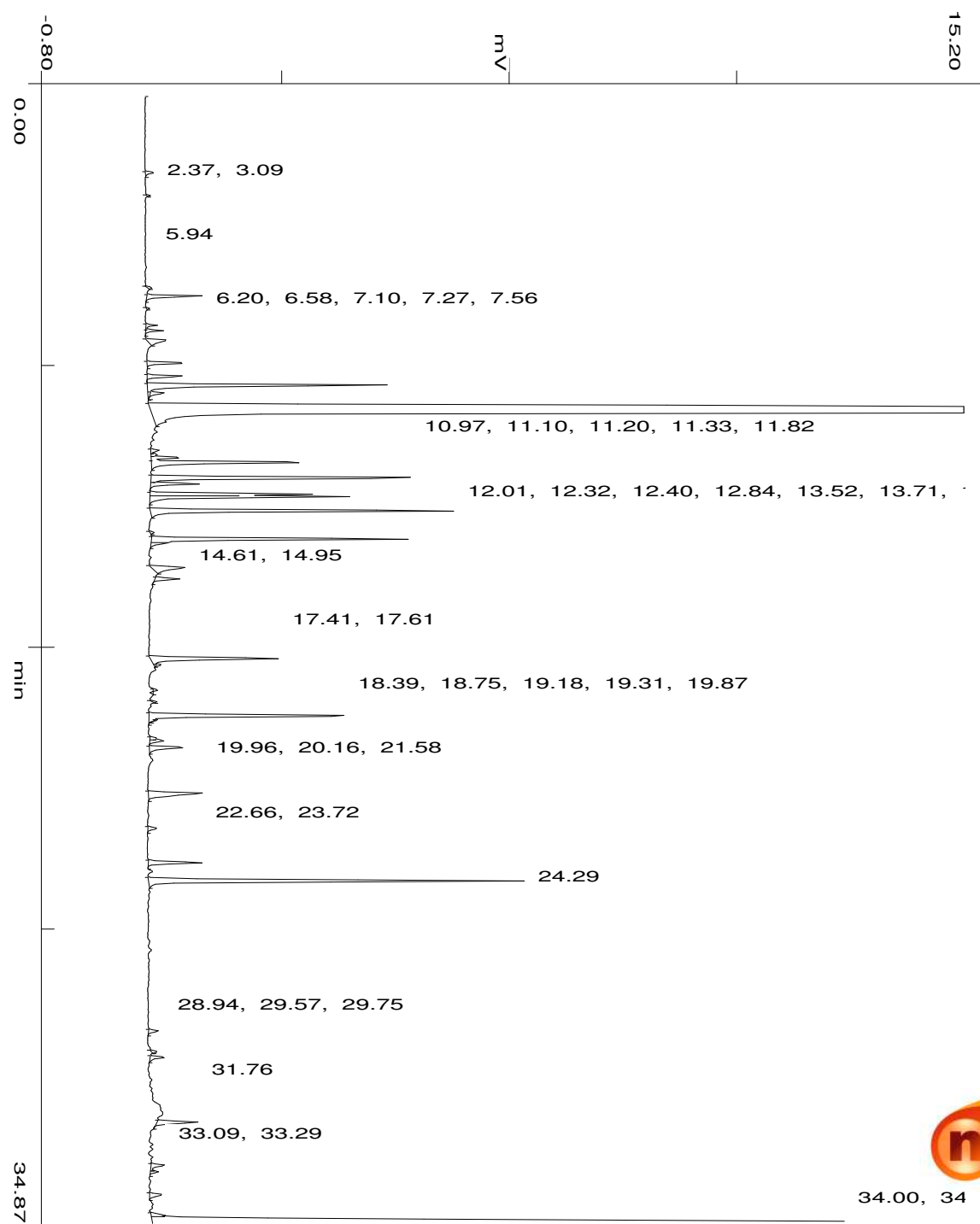
Date: 27 Nov 2023

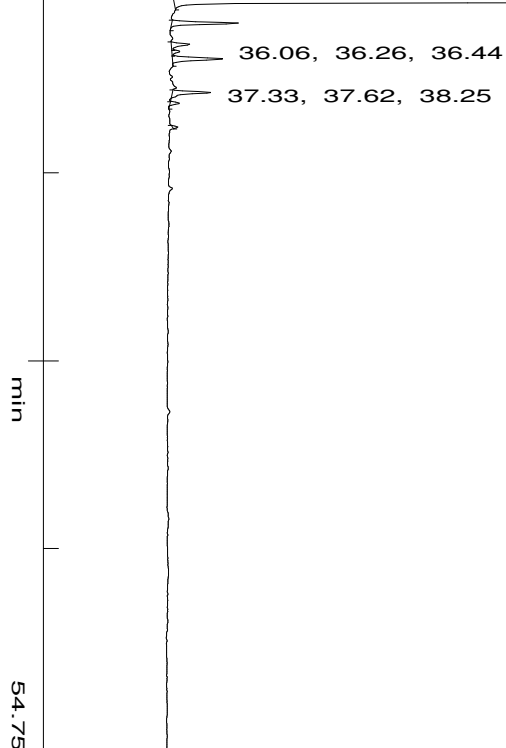
Time: 16:13:8

Run: ch1: 0

Type of Analysis : Percent On Area

Pk.Wdth	Peak Thrsh.	Area Rej.	Ht.Rej.	Cht.Speed
4	30	5	4	0.50





No.	R.T.	Area	Area %	Pk Ty	Comp Name
1	2.37	7267	0.0759	BB	
2	3.09	1489	0.0156	BB	
3	5.94	2553	0.0267	BB	
4	6.20	39127	0.4088	BB	
5	6.58	1561	0.0163	BB	
6	7.10	8306	0.0868	BV	
7	7.27	11864	0.1240	VB	
8	7.56	23343	0.2439	BB	
9	8.26	32072	0.3351	BB	
10	8.68	28264	0.2953	BP	
11	8.96	212292	2.2181	PB	
12	9.20	13026	0.1361	TTT	
13	9.80	4684323	48.9424	BB	Phenethyl alcohol
14	10.97	6990	0.0730	BV	
15	11.10	4690	0.0490	VV	
16	11.20	24519	0.2562	VV	
17	11.33	149093	1.5577	VB	
18	11.82	235475	2.4603	BV	
19	12.01	40868	0.4270	VP	
20	12.32	118412	1.2372	PV	
21	12.40	159598	1.6675	VB	
22	12.84	269544	2.8162	BB	Geraniol
23	13.52	2703	0.0282	BB	
24	13.71	220144	2.3001	BV	
25	13.85	15636	0.1634	S	
26	14.61	42566	0.4447	BB	
27	14.95	19685	0.2057	BB	
28	17.41	125452	1.3107	BB	
29	17.61	3910	0.0409	TTT	
30	18.75	2230	0.0233	BB	
31	19.18	195681	2.0445	BB	

32	19.31	2711	0.0283	TTT	
33	19.87	5119	0.0535	BV	
34	19.96	12823	0.1340	VP	
35	20.16	36065	0.3768	PB	
36	21.58	69590	0.7271	BB	
37	22.66	9282	0.0970	BB	
38	23.72	48328	0.5049	BB	
39	24.29	338396	3.5356	BB	
40	28.94	8729	0.0912	BB	
41	29.57	3900	0.0407	BB	
42	29.75	14149	0.1478	BB	
43	31.76	38399	0.4012	BB	
44	33.09	15228	0.1591	BV	
45	33.29	6688	0.0699	VB	
46	34.00	13631	0.1424	BB	
47	34.61	10371	0.1084	S	
48	34.93	2084570	21.7798	BB	Phenylacetate <phenethyl->
49	35.50	47732	0.4987	BB	
50	36.06	15461	0.1615	BV	
51	36.26	6219	0.0650	VV	
52	36.44	43281	0.4522	VB	
53	37.33	29433	0.3075	BV	
54	37.62	5882	0.0615	VB	
55	38.25	2432	0.0254	BB	
		9571101	100.0000		

**Summary :**

**TOTAL PEAKS :** 56  
**MUL. FACTOR :** 1.0000  
**SAMPLE AMT.** 100.0000  
**ISTD AMT.** 0.0000000e+00  
**DILUTION :** 1.0000