

REPORT

COMPANY NAME: NISHANT AROMAS PRIVATE LIMITED, HARIDWAR

LOT NO. : ---

Sample Name: Patchouli Oil DB5

Data File: C:\NuChrom\ch1def00\Patchouli Oil DB5.dat

Method File: .MET

Detector: FID.

System: GC

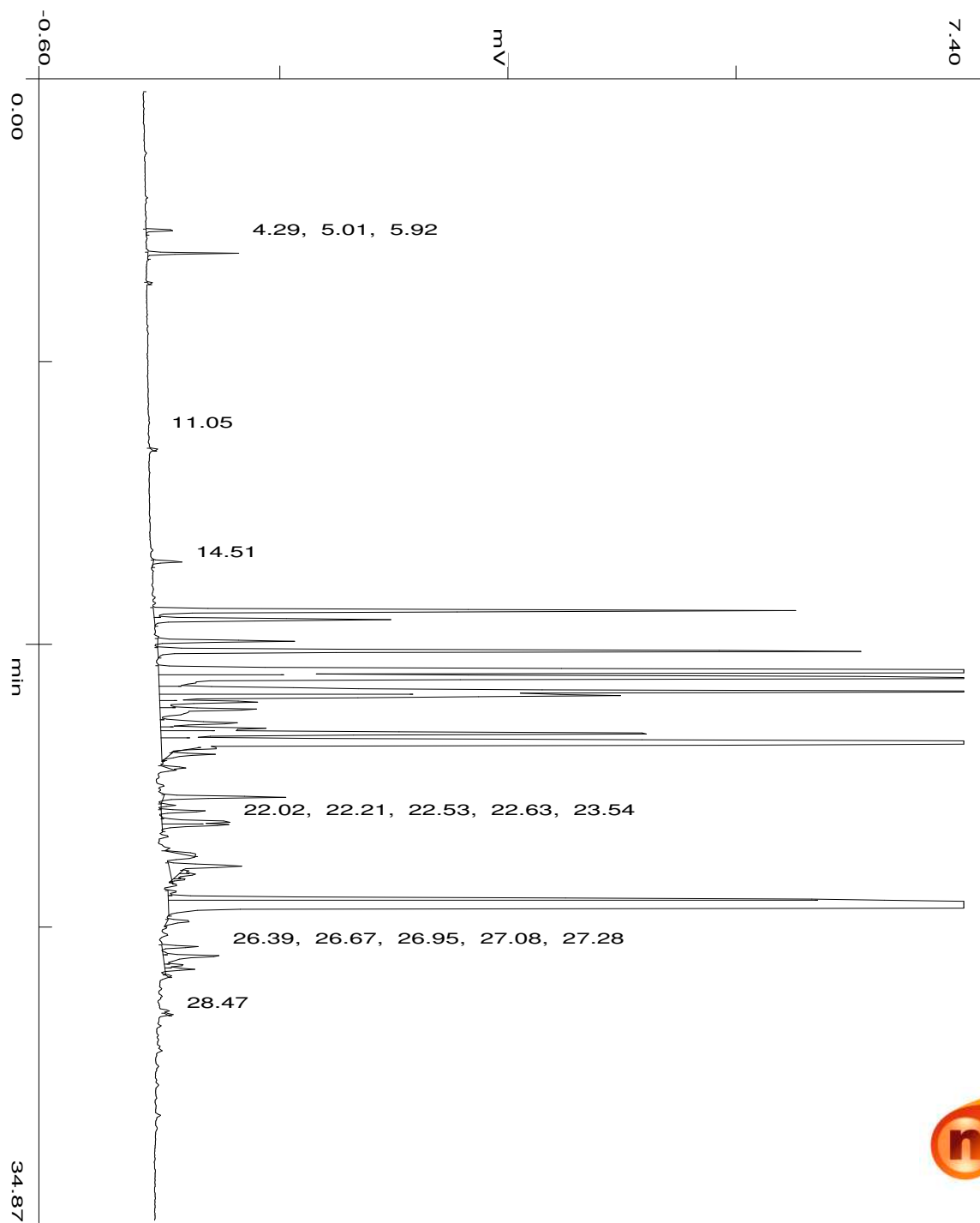
Date: 2 Jun 2023

Time: 14:51:6

Run: ch1: 0

Type of Analysis : Percent On Area

Pk.Wdth	Peak Thrsh.	Area Rej.	Ht.Rej.	Cht.Speed
4	30	5	4	0.50



min

46.69

No.	R.T.	Area	Area %	Pk Ty	Comp Name
1	4.29	10622	0.1107	BB	
2	5.01	26282	0.2739	BB	
3	5.92	1272	0.0133	BB	
4	11.05	1936	0.0202	BB	
5	14.51	11831	0.1233	BB	
6	16.03	271968	2.8340	BV	
7	16.30	100822	1.0506	VB	
8	16.96	56206	0.5857	BP	
9	17.27	331612	3.4555	PB	
10	17.92	1371877	14.2954	BV	
11	18.10	738506	7.6955	VV	
12	18.53	572542	5.9661	VV	
13	18.63	293146	3.0547	VV	
14	18.84	51664	0.5384	VV	
15	19.07	67219	0.7004	VV	
16	19.49	48988	0.5105	VV	
17	19.66	48124	0.5015	VV	
18	19.81	300909	3.1356	VV	
19	20.14	1788833	18.6403	VB	
20	20.26	10521	0.1096	TTT	
21	20.45	20927	0.2181	TTT	
22	20.86	6759	0.0704	BB	
23	21.77	53002	0.5523	BP	
24	22.02	4719	0.0492	PP	
25	22.21	19009	0.1981	PV	
26	22.53	35504	0.3700	VV	
27	22.63	35212	0.3669	VB	
28	23.54	7322	0.0763	BB	
29	23.90	55941	0.5829	BB	
30	24.05	3369	0.0351	TTV	
31	24.16	9726	0.1013	TVV	
32	24.31	5828	0.0607	TVT	
33	24.69	4251	0.0443	BV	
34	24.92	235472	2.4537	VV	Patchouli Alcohol
35	25.17	2903161	30.2520	VB	Patchouli Alcohol
36	25.60	13958	0.1454	BB	
37	26.39	16926	0.1764	BV	
38	26.67	37691	0.3928	VV	
39	26.95	9228	0.0962	VV	
40	27.08	10813	0.1127	VP	

41	27.28	1288	0.0134	PB
42	28.47	1623	0.0169	BB
		9596608	100.0000	

**Summary :**

**CH- 01**

**TOTAL PEAKS :** 42  
**MUL. FACTOR :** 1.0000  
**SAMPLE AMT.** 100.0000  
**ISTD AMT.** 0.0000000e+00  
**DILUTION :** 1.0000