

REPORT

COMPANY NAME: NISHANT AROMAS PRIVATE LIMITED, HARIDWAR

LOT NO. :-----

Sample Name: Organic Vetivert Oil DB5

Data File: C:\NuChrom\ch1def00\Organic Vetivert Oil DB5 .DAT

Method File: .MET

Detector: FID.

System: GC

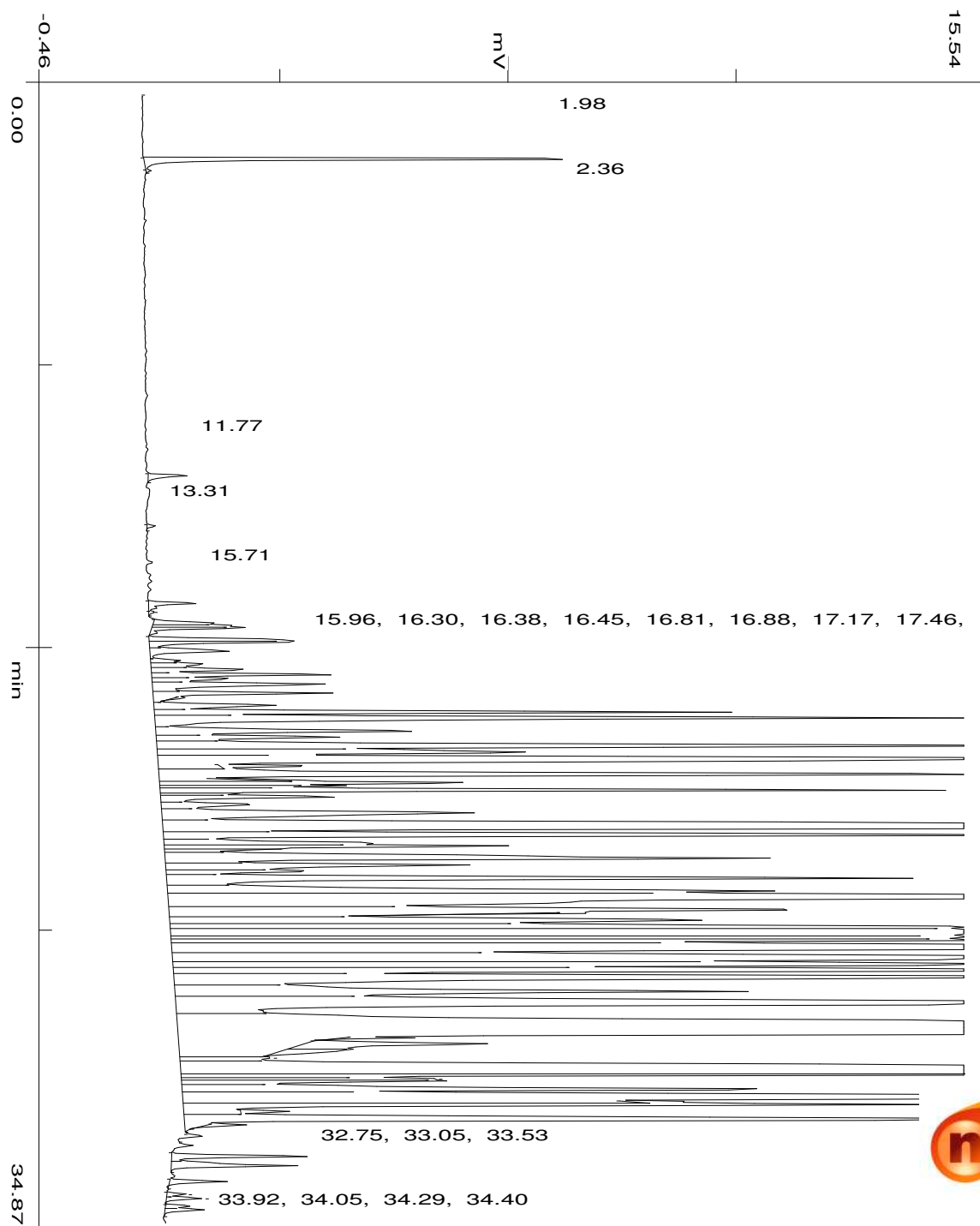
Date: 5 March 2023

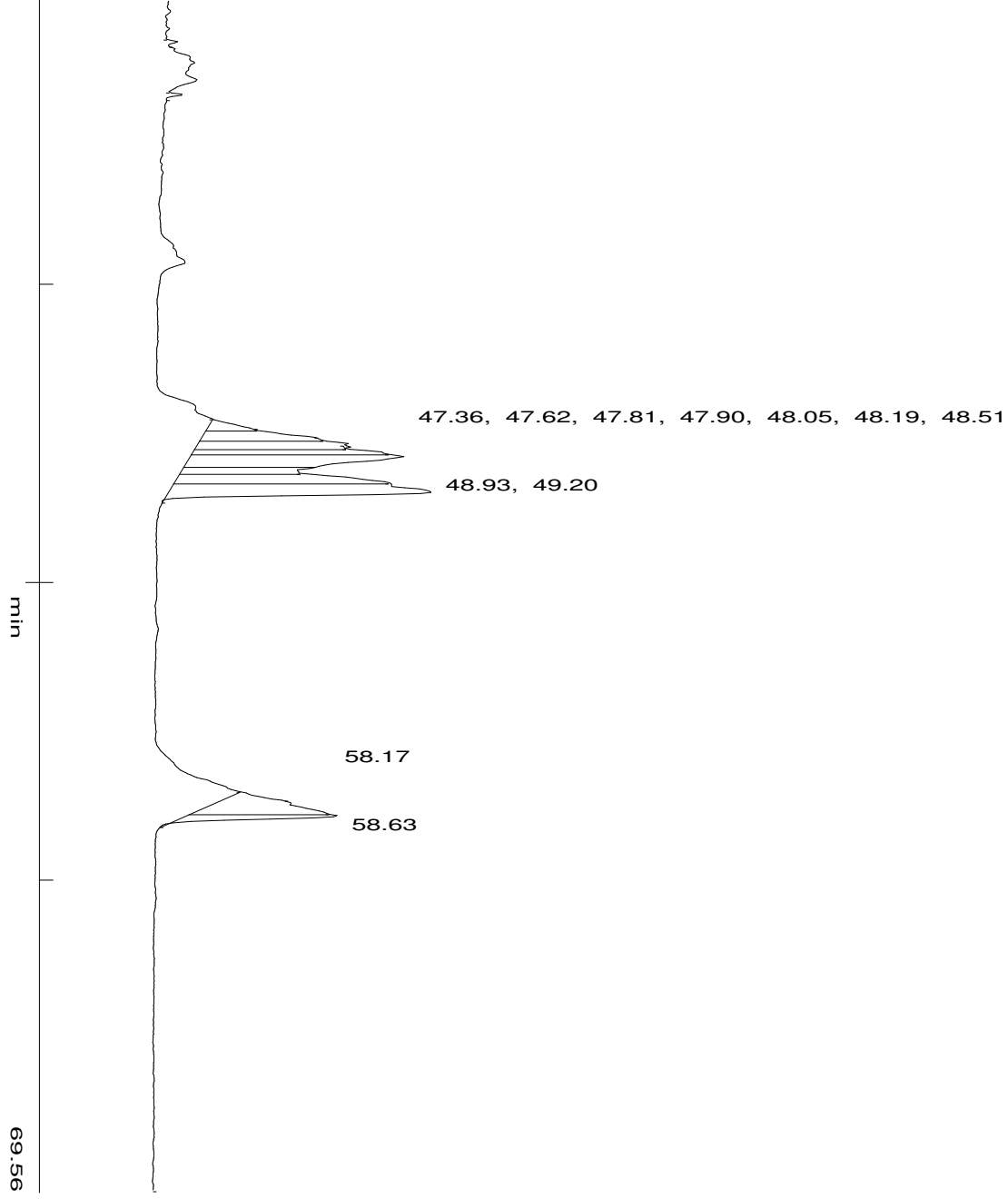
Time: 15:50:42

Run: ch1: 0

Type of Analysis : Percent On Area

Pk.Width	Peak Thrsh.	Area Rej.	Ht.Rej.	Cht.Speed
4	30	5	4	0.50





No.	R.T.	Area	Area %	Pk Ty	Comp Name
1	1.98	404239	0.4816	BB	
2	2.36	3752	0.0045	TTT	
3	11.77	42535	0.0507	BB	
4	13.31	7258	0.0086	BB	
5	15.71	54031	0.0644	BV	
6	15.96	5346	0.0064	S	
7	16.30	56258	0.0670	BV	
8	16.38	63216	0.0753	VV	
9	16.45	91222	0.1087	VP	
10	16.81	114026	0.1358	PV	
11	16.88	153111	0.1824	VV	
12	17.17	111197	0.1325	VV	
13	17.46	29625	0.0353	VV	
14	17.57	67891	0.0809	VV	
15	17.75	110331	0.1314	VV	
16	17.90	181009	0.2156	VV	
17	18.04	87000	0.1036	VV	

18	18.20	255073	0.3039	VV	
19	18.47	209556	0.2497	VV	
20	18.61	11067	0.0132	TTT	
21	18.84	163133	0.1943	VV	
22	19.06	574100	0.6839	VV	
23	19.23	1104146	1.3154	VV	
24	19.64	359743	0.4286	VV	
25	19.83	223648	0.2664	VV	
26	20.10	1344130	1.6013	VV	
27	20.29	600329	0.7152	VV	
28	20.50	2216366	2.6404	VV	
29	20.72	71914	0.0857	TTT	
30	20.98	1329978	1.5845	VV	
31	21.14	24667	0.0294	TTT	
32	21.23	323338	0.3852	VV	
33	21.33	149157	0.1777	VV	
34	21.46	735975	0.8768	VV	
35	21.56	56809	0.0677	S	
36	21.66	201490	0.2400	VV	
37	21.90	133648	0.1592	VV	
38	22.16	587679	0.7001	VV	
39	22.64	4520418	5.3854	VV	
40	22.85	1254447	1.4945	VV	
41	23.09	256879	0.3060	VV	
42	23.18	353586	0.4212	VV	
43	23.28	104947	0.1250	S	
44	23.57	1035544	1.2337	VV	
45	23.77	434691	0.5179	VV	
46	23.96	173339	0.2065	VV	
47	24.18	995326	1.1858	VV	
48	24.57	905005	1.0782	VV	
49	24.76	3530851	4.2064	VV	
50	25.15	1373354	1.6361	VV	
51	25.25	71670	0.0854	TTT	
52	25.47	946717	1.1279	VV	
53	25.67	1105747	1.3173	VV	
54	25.87	2560840	3.0508	VV	
55	25.98	978385	1.1656	VV	
56	26.08	1003210	1.1952	VV	
57	26.31	3507337	4.1784	VV	
58	26.65	3034032	3.6146	VV	
59	26.84	1562173	1.8611	VV	
60	27.00	1747190	2.0815	VV	
61	27.24	2284136	2.7212	VV	
62	27.67	1070543	1.2754	VV	
63	28.03	2862328	3.4100	VV	
64	28.88	14317911	17.0575	VV	Khusimol
65	28.93	394100	0.4695	TTT	
66	29.09	48644	0.0580	TTP	
67	29.29	256749	0.3059	TPV	
68	29.52	113723	0.1355	TVT	
69	29.71	120534	0.1436	S	
70	30.15	6309372	7.5166	BV	
71	30.23	999022	1.1902	VV	
72	30.36	206908	0.2465	S	

73	30.42	288299	0.3435	BV
74	30.69	803036	0.9567	VV
75	30.95	2891336	3.4446	VV
76	31.07	35616	0.0424	TTT
77	31.17	964948	1.1496	VV
78	31.38	41240	0.0491	TTT
79	31.63	1447511	1.7245	VB
80	31.79	33015	0.0393	TTT
81	32.75	143320	0.1707	BV
82	33.05	157476	0.1876	VB
83	33.53	53244	0.0634	BB
84	33.92	16898	0.0201	S
85	34.05	32863	0.0392	S
86	34.29	21706	0.0259	BV
87	34.40	41024	0.0489	VB
88	47.36	89388	0.1065	S
89	47.62	296265	0.3530	S
90	47.81	377391	0.4496	BV
91	47.90	3393	0.0040	TTT
92	48.05	288740	0.3440	VV
93	48.19	704495	0.8393	VV
94	48.51	259406	0.3090	S
95	48.93	545104	0.6494	VV
96	49.20	946693	1.1278	VB
97	58.17	502419	0.5986	S
98	58.63	256649	0.3058	BB
		83939128	100.0000	

Summary :

CH- 01

TOTAL PEAKS : 98
MUL. FACTOR : 1.0000
SAMPLE AMT. 100.0000
ISTD AMT. 0.0000000e+00
DILUTION : 1.0000