

REPORT

COMPANY NAME : NISHANT AROMAS PRIVATE LIMITED, HARIDWAR

LOT NO.: ---

Sample Name: Nutmeg Oil DB5

Data File: C:\NuChrom\ch2def00\Nutmeg Oil DB5.dat

Method File: NEW01.MET

Detector: FID.

System: GC

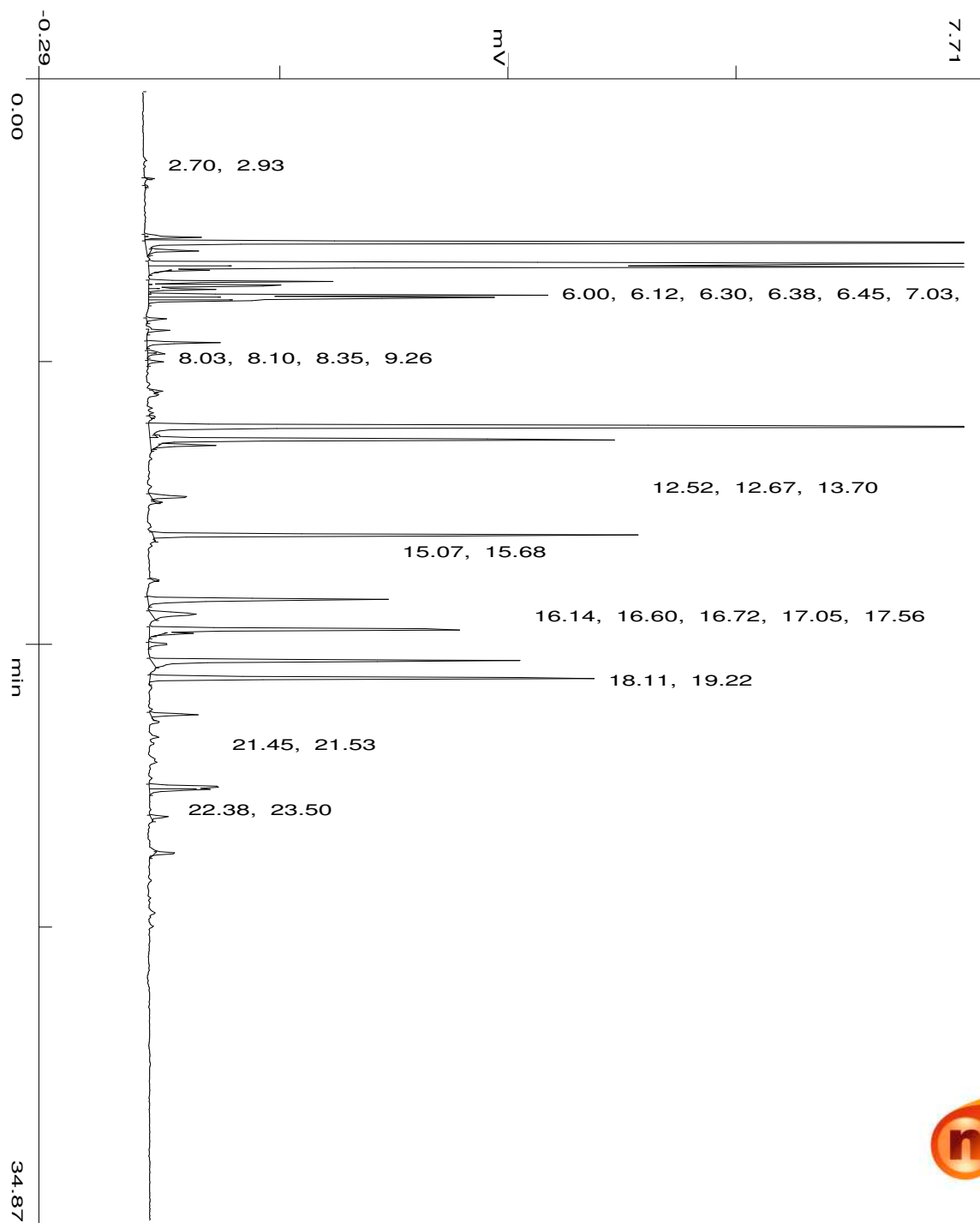
Date: 2 Feb 2024

Time: 11:3:4

Run: ch1: 0

Type of Analysis : Percent On Area

Pk.Width	Peak Thrsh.	Area Rej.	Ht.Rej.	Cht.Speed
4	30	5	4	0.50



min

46.54

No.	R.T.	Area	Area %	Pk Ty	Comp Name
1	2.70	1465	0.0301	BB	
2	4.44	2954	0.0607	BV	
3	4.51	15664	0.3217	VP	
4	4.67	1217191	24.9956	PB	Pinene <alpha->
5	4.93	16533	0.3395	TTT	
6	5.32	740779	15.2123	BV	Sabinene
7	5.42	513385	10.5426	VB	Pinene <beta->
8	5.53	10704	0.2198	TTT	
9	5.88	51907	1.0659	BV	
10	6.00	52649	1.0812	VV	
11	6.12	20709	0.4253	VV	
12	6.30	112938	2.3192	VV	
13	6.38	121740	2.5000	VV	
14	6.45	43113	0.8853	VB	
15	7.03	6376	0.1309	BB	
16	7.38	6569	0.1349	BB	
17	7.76	25356	0.5207	BB	
18	8.03	2987	0.0613	BV	
19	8.10	6778	0.1392	VB	
20	8.35	5767	0.1184	BB	
21	9.26	2656	0.0545	BB	
22	10.05	1831	0.0376	BB	
23	10.36	657281	13.4976	BV	Terpinen-4-ol
24	10.63	1323	0.0272	TTT	
25	10.75	201604	4.1400	VB	
26	10.93	21598	0.4435	TTT	
27	12.52	19220	0.3947	BP	
28	12.67	1648	0.0338	PB	
29	13.70	195815	4.0212	BB	
30	15.07	1706	0.0350	BB	
31	15.68	114526	2.3518	BB	
32	16.14	33358	0.6850	BB	
33	16.60	153983	3.1621	BB	
34	16.72	10515	0.2159	TTT	
35	17.05	10044	0.2063	BB	
36	17.56	163556	3.3587	BB	
37	18.11	205087	4.2116	BB	
38	19.22	19567	0.4018	BB	
39	21.45	33858	0.6953	BV	
40	21.53	28542	0.5861	VB	

41	22.38	7420	0.1524	BB
42	23.50	8921	0.1832	BB
		4869624	100.0000	

**Summary :**

**TOTAL PEAKS :** 43  
**MUL. FACTOR :** 1.0000  
**SAMPLE AMT.** 100.0000  
**ISTD AMT.** 0.0000000e+00  
**DILUTION :** 1.0000