

REPORT

COMPANY NAME: NISHANT AROMAS PRIVATE LIMITED, HARIDWAR

LOT NO.: ---

Sample Name: Nagarmotha Oil DB5

Data File: C:\NuChrom\ch1def00\ Nagarmotha Oil DB5.dat

Method File: .MET

Detector: FID.

System: GC

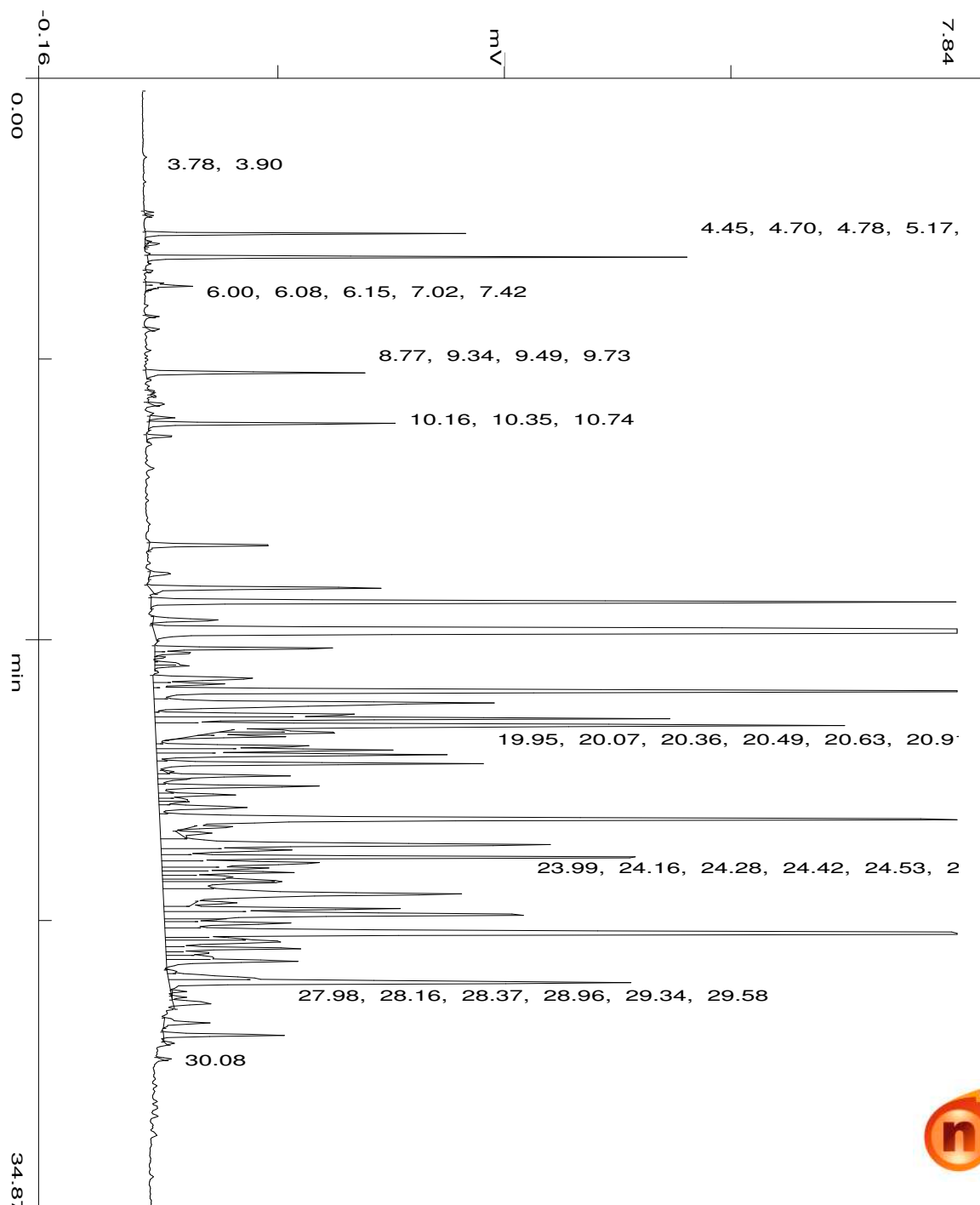
Date: 22 Mar 2023

Time: 14:56:24

Run: ch1: 0

Type of Analysis : Percent On Area

Pk.Width	Peak Thrsh.	Area Rej.	Ht.Rej.	Cht.Speed
4	30	5	4	0.50



min

58.65

No.	R.T.	Area	Area %	Pk Ty	Comp Name
1	3.78	2433	0.0221	BP	
2	3.90	1529	0.0139	PB	
3	4.45	100575	0.9146	BB	
4	4.78	4633	0.0421	TVT	
5	5.17	173092	1.5740	BB	
6	5.61	2072	0.0188	BB	
7	6.00	6539	0.0595	BV	
8	6.08	19511	0.1774	VB	
9	6.15	1192	0.0108	TTT	
10	7.02	2272	0.0207	BB	
11	7.42	4228	0.0384	BB	
12	8.77	86335	0.7851	BB	
13	9.34	1093	0.0099	BB	
14	9.49	1293	0.0118	BB	
15	9.73	5821	0.0529	BB	
16	10.16	8787	0.0799	BV	
17	10.35	99500	0.9048	VB	
18	10.74	12173	0.1107	BB	
19	14.12	59590	0.5419	BB	
20	15.01	12658	0.1151	BB	
21	15.46	115045	1.0462	BB	
22	15.90	418076	3.8019	BB	Copaene <alpha->
23	16.46	36811	0.3347	BP	
24	16.85	2695542	24.5124	PB	Cyperene
25	17.33	81659	0.7426	BV	
26	17.48	17836	0.1622	VV	
27	17.62	3846	0.0350	VV	
28	17.79	10824	0.0984	VV	

29	17.87	14281	0.1299	VB
30	18.26	68390	0.6219	BV
31	18.44	34932	0.3177	VV
32	18.67	666551	6.0614	VV
33	19.02	288785	2.6261	VV
34	19.39	105441	0.9588	VV
35	19.51	250789	2.2806	VV
36	19.72	491476	4.4693	VV
37	19.87	21801	0.1983	TTV
38	19.95	57333	0.5214	TVV
39	20.07	40937	0.3723	TVT
40	20.36	81193	0.7383	VV
41	20.49	120140	1.0925	VV
42	20.63	155785	1.4167	VV
43	20.91	158839	1.4444	VV
44	21.15	2500	0.0227	TTT
45	21.29	63876	0.5809	VV
46	21.40	16276	0.1480	S
47	21.62	82811	0.7531	VV
48	21.88	39601	0.3601	VV
49	22.01	13272	0.1207	VV
50	22.09	14000	0.1273	VV
51	22.27	55832	0.5077	VV
52	22.64	642172	5.8397	VV
53	22.87	20545	0.1868	TTP
54	23.07	16392	0.1491	TPT
55	23.43	275882	2.5088	VV
56	23.60	84478	0.7682	VV
57	23.82	264333	2.4038	VV
58	23.99	124007	1.1277	VV
59	24.16	54780	0.4982	VV
60	24.28	66622	0.6058	VV
61	24.42	39724	0.3612	VV
62	24.53	45414	0.4130	VV
63	24.59	90594	0.8238	VV
64	24.97	314206	2.8573	VV
65	25.23	21076	0.1917	TTT
66	25.41	125632	1.1425	VV
67	25.60	260571	2.3696	VV
68	25.75	25417	0.2311	S
69	25.86	77351	0.7034	VV
70	26.20	824783	7.5003	VV
71	26.33	32954	0.2997	S
72	26.45	85482	0.7773	VV
73	26.65	68173	0.6199	VV
74	26.79	23553	0.2142	VV
75	26.94	31115	0.2829	VV
76	27.04	74633	0.6787	VP
77	27.35	4839	0.0440	PV
78	27.56	52919	0.4812	VV
79	27.72	299040	2.7194	VP
80	27.98	3702	0.0337	TTP
81	28.16	4669	0.0425	TPT
82	28.37	24312	0.2211	PB
83	28.96	25649	0.2332	BB

84	29.34	55473	0.5045	BP
85	29.58	3261	0.0297	PB
86	30.08	3071	0.0279	BB
		10996630	100.0000	

**Summary :**

**CH- 01**

**TOTAL PEAKS :** 87  
**MUL. FACTOR :** 1.0000  
**SAMPLE AMT.** 100.0000  
**ISTD AMT.** 0.0000000e+00  
**DILUTION :** 1.0000