

REPORT

COMPANY NAME: NISHANT AROMAS PRIVATE LIMITED, HARIDWAR

LOT NO.: ---

Sample Name: Myrrh Oil DB5

Data File: C:\NuChrom\ch1def00\Myrrh Oil DB5.DAT

Method File: .MET

Detector: FID.

System: GC

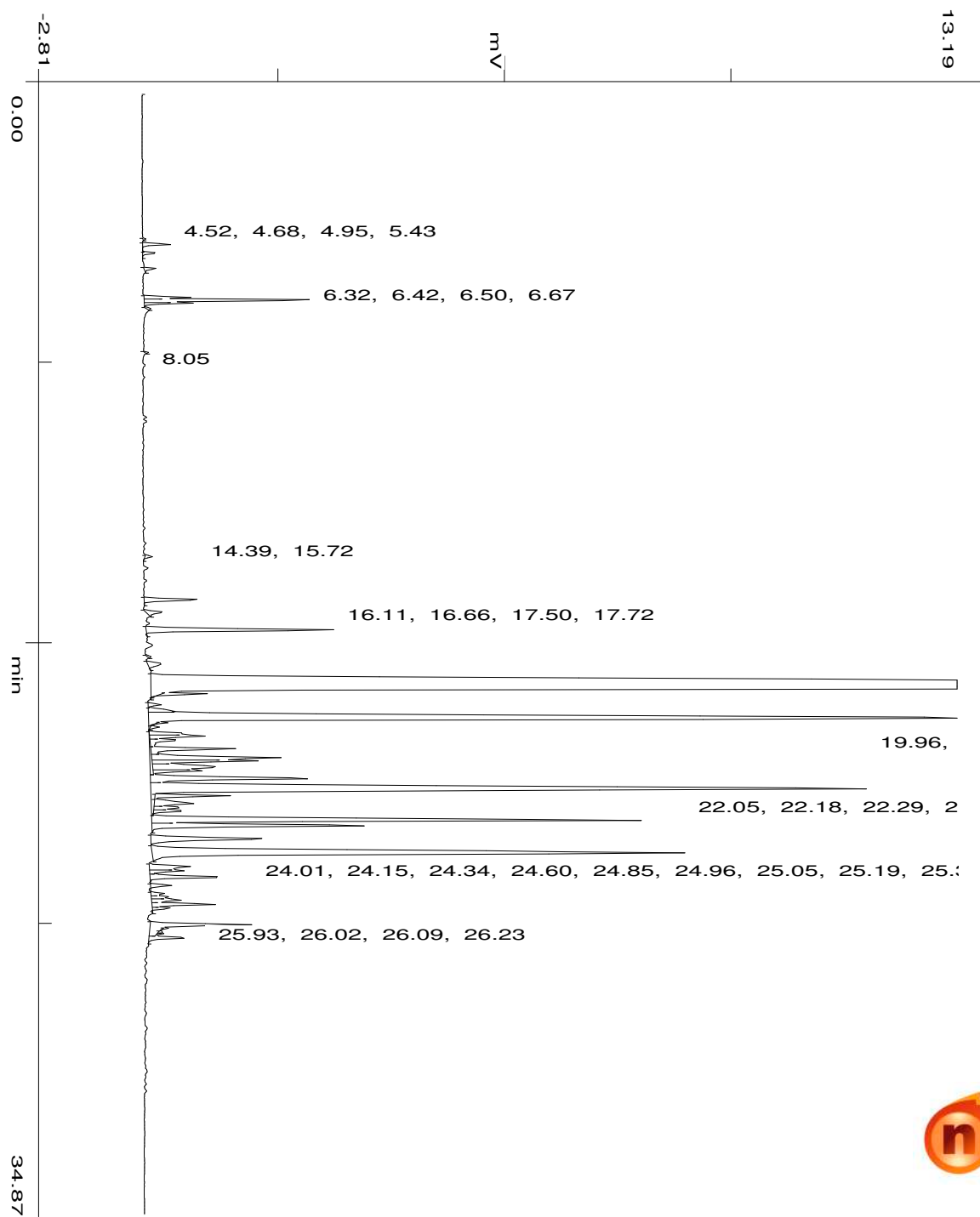
Date: 3 Jan 2024

Time: 17:2:38

Run: ch1: 0

Type of Analysis : Percent On Area

Pk.Width	Peak Thrsh.	Area Rej.	Ht.Rej.	Cht.Speed
4	30	5	4	0.50



min

47.40

No.	R.T.	Area	Area %	Pk Ty	Comp Name
1	4.52	1469	0.0110	BB	
2	4.68	20966	0.1573	BV	
3	4.95	10850	0.0814	VB	
4	5.43	8911	0.0668	BB	
5	6.32	30359	0.2277	BV	
6	6.42	133712	1.0031	VV	
7	6.50	32287	0.2422	VP	
8	6.67	2889	0.0217	PB	
9	8.05	1614	0.0121	BB	
10	14.39	5920	0.0444	BB	
11	15.72	49660	0.3725	BB	
12	16.11	17528	0.1315	BB	
13	16.66	186760	1.4010	BB	
14	17.50	2492	0.0187	BB	
15	17.72	18932	0.1420	BB	
16	18.49	6962021	52.2265	BB	Caryophyllene <(Z)->
17	18.65	32663	0.2450	TTT	
18	18.99	11259	0.0845	BV	
19	19.17	22316	0.1674	S	
20	19.42	1432090	10.7430	BV	Humulene <alpha->
21	19.55	7141	0.0536	TTT	
22	19.68	6756	0.0507	TTT	
23	19.87	27977	0.2099	TTV	
24	19.96	51292	0.3848	TVV	
25	20.08	32508	0.2439	TVV	
26	20.35	82728	0.6206	TVV	
27	20.63	134830	1.0114	TVV	
28	20.73	97130	0.7286	TVV	
29	20.92	96661	0.7251	TVV	
30	21.04	47440	0.3559	TVT	
31	21.28	190683	1.4304	VV	
32	21.60	1220930	9.1590	VV	
33	21.82	57440	0.4309	TTV	
34	22.05	51686	0.3877	TVV	
35	22.18	24988	0.1874	TVV	
36	22.29	25703	0.1928	TVT	
37	22.58	526965	3.9531	VV	
38	22.75	223009	1.6729	VB	
39	23.15	142180	1.0666	BP	

40	23.61	838917	6.2932	PB
41	24.01	51083	0.3832	BV
42	24.15	30089	0.2257	VV
43	24.34	73641	0.5524	VP
44	24.60	16612	0.1246	PP
45	24.85	10920	0.0819	PV
46	24.96	14919	0.1119	VV
47	25.05	25968	0.1948	VV
48	25.19	54852	0.4115	VV
49	25.31	12498	0.0938	VB
50	25.83	121615	0.9123	BV
51	25.93	3138	0.0235	TTP
52	26.02	2567	0.0193	TPV
53	26.09	4975	0.0373	TVT
54	26.23	35906	0.2694	VB
		13330444	100.0000	

Summary :

CH- 01

TOTAL PEAKS : 54
MUL. FACTOR : 1.0000
SAMPLE AMT. 100.0000
ISTD AMT. 0.0000000e+00
DILUTION : 1.0000