

REPORT

COMPANY NAME: NISHANT AROMAS PRIVATE LIMITED, HARIDWAR

LOT NO.: JUN-BERONAPL1023

Sample Name: Juniper Berry Oil DB5

Data File: C:\NuChrom\ch1def00\Juniper Berry Oil DB5.dat

Method File: .MET

Detector: FID.

System: GC

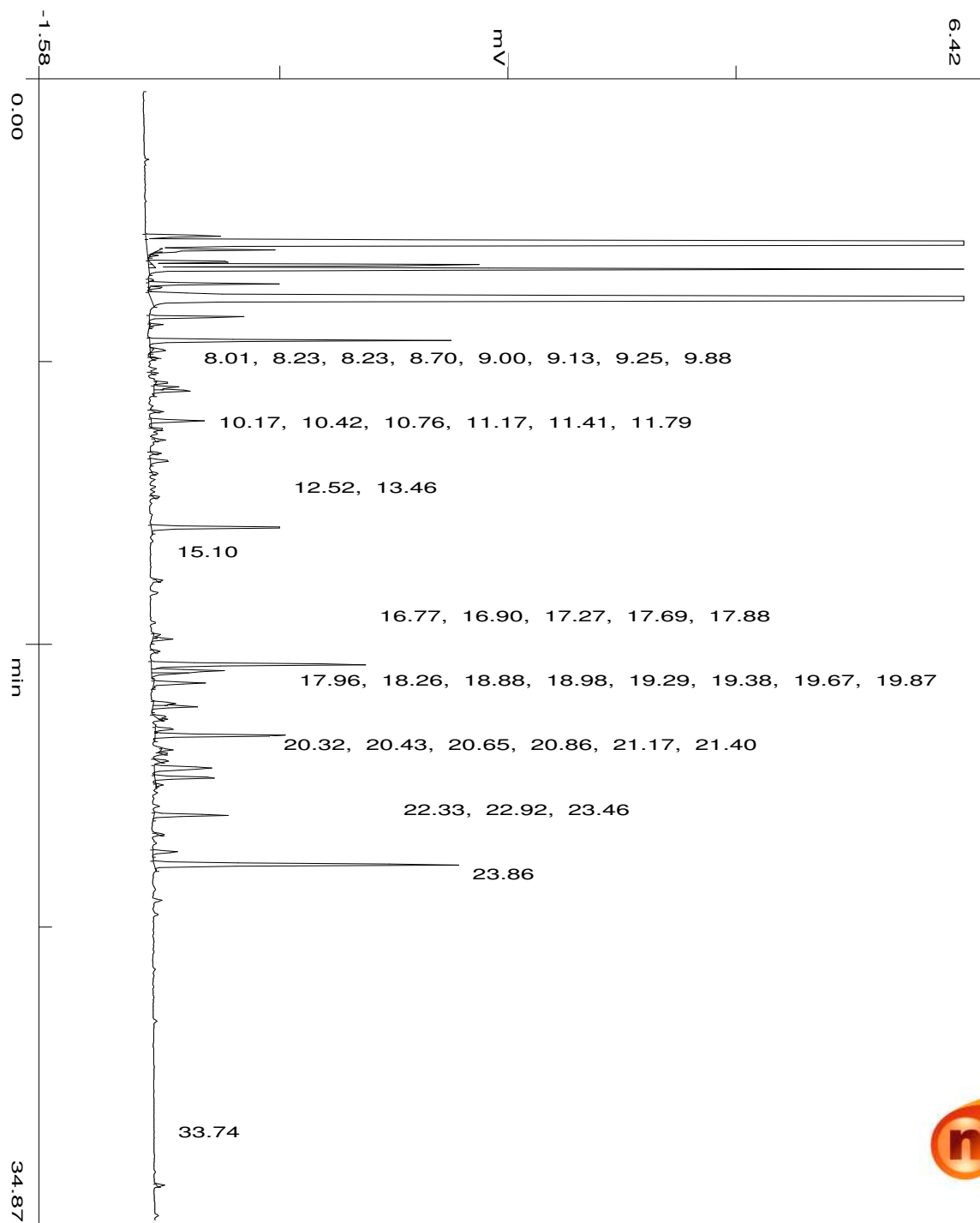
Date: 9 Nov 2023

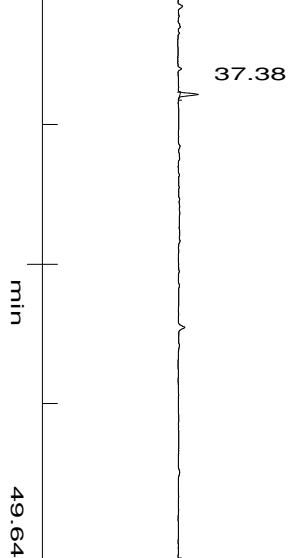
Time: 10:49:16

Run: ch1: 0

Type of Analysis : Percent On Area

Pk.Width	Peak Thrsh.	Area Rej.	Ht.Rej.	Cht.Speed
4	30	5	4	0.50





No.	R.T.	Area	Area %	Pk Ty	Comp Name
1	4.47	30405	0.2550	BV	
2	4.73	6978626	58.5198	VV	Pinene <alpha->
3	4.90	34014	0.2852	TTV	
4	4.97	5368	0.0450	TVT	
5	5.08	2097	0.0176	TTT	
6	5.27	30715	0.2576	TTV	
7	5.37	115666	0.9699	TVT	
8	5.50	440090	3.6904	VB	Myrcene
9	5.83	1784	0.0150	BP	
10	5.95	37912	0.3179	PP	
11	6.07	4814	0.0404	TTT	
12	6.45	3398084	28.4949	PB	Limonene
13	6.97	33883	0.2841	BB	
14	7.21	3824	0.0321	TTT	
15	7.69	106179	0.8904	BB	
16	8.01	6919	0.0580	TTT	
17	8.23	2346	0.0197	PB	
18	8.70	1507	0.0126	BB	
19	9.00	4671	0.0392	BP	
20	9.13	9664	0.0810	PV	
21	9.25	15054	0.1262	VB	
22	9.88	2378	0.0199	BB	
23	10.17	18399	0.1543	BP	
24	10.42	2118	0.0178	PB	
25	10.76	3302	0.0277	BB	
26	11.17	2348	0.0197	BB	
27	11.41	9756	0.0818	BB	
28	11.79	1834	0.0154	BB	
29	12.52	2062	0.0173	BB	
30	13.46	61203	0.5132	BB	
31	15.10	2003	0.0168	BB	
32	16.77	3177	0.0266	BV	
33	16.90	7423	0.0622	VB	
34	17.27	1962	0.0165	BB	
35	17.69	101167	0.8483	BV	
36	17.88	31114	0.2609	VV	
37	17.96	14149	0.1187	S	

38	18.26	22921	0.1922	BB
39	18.88	9796	0.0821	BV
40	18.98	18728	0.1570	VB
41	19.29	4755	0.0399	BV
42	19.38	2147	0.0180	VB
43	19.67	7974	0.0669	BV
44	19.87	60538	0.5076	VB
45	20.32	4018	0.0337	BP
46	20.43	1861	0.0156	PB
47	20.65	3998	0.0335	BB
48	20.86	34724	0.2912	BP
49	21.17	27293	0.2289	PB
50	21.40	2199	0.0184	TTT
51	22.33	31419	0.2635	BB
52	22.92	1785	0.0150	BB
53	23.46	10933	0.0917	BB
54	23.86	143145	1.2004	BB
55	33.74	2502	0.0210	BB
56	37.38	6484	0.0544	BB
		11925238	100.0000	

Summary :

CH- 01

TOTAL PEAKS : 57
MUL. FACTOR : 1.0000
SAMPLE AMT. 100.0000
ISTD AMT. 0.0000000e+00
DILUTION : 1.0000