

REPORT

COMPANY NAME : NISHANT AROMAS PRIVATE LIMITED, HARIDWAR

LOT NO.: ---

Sample Name: Jatamansi Oil DB5

Data File: C:\NuChrom\ch2def00\Jatamansi Oil DB5.dat

Method File: NEW01.MET

Detector: FID.

System: GC

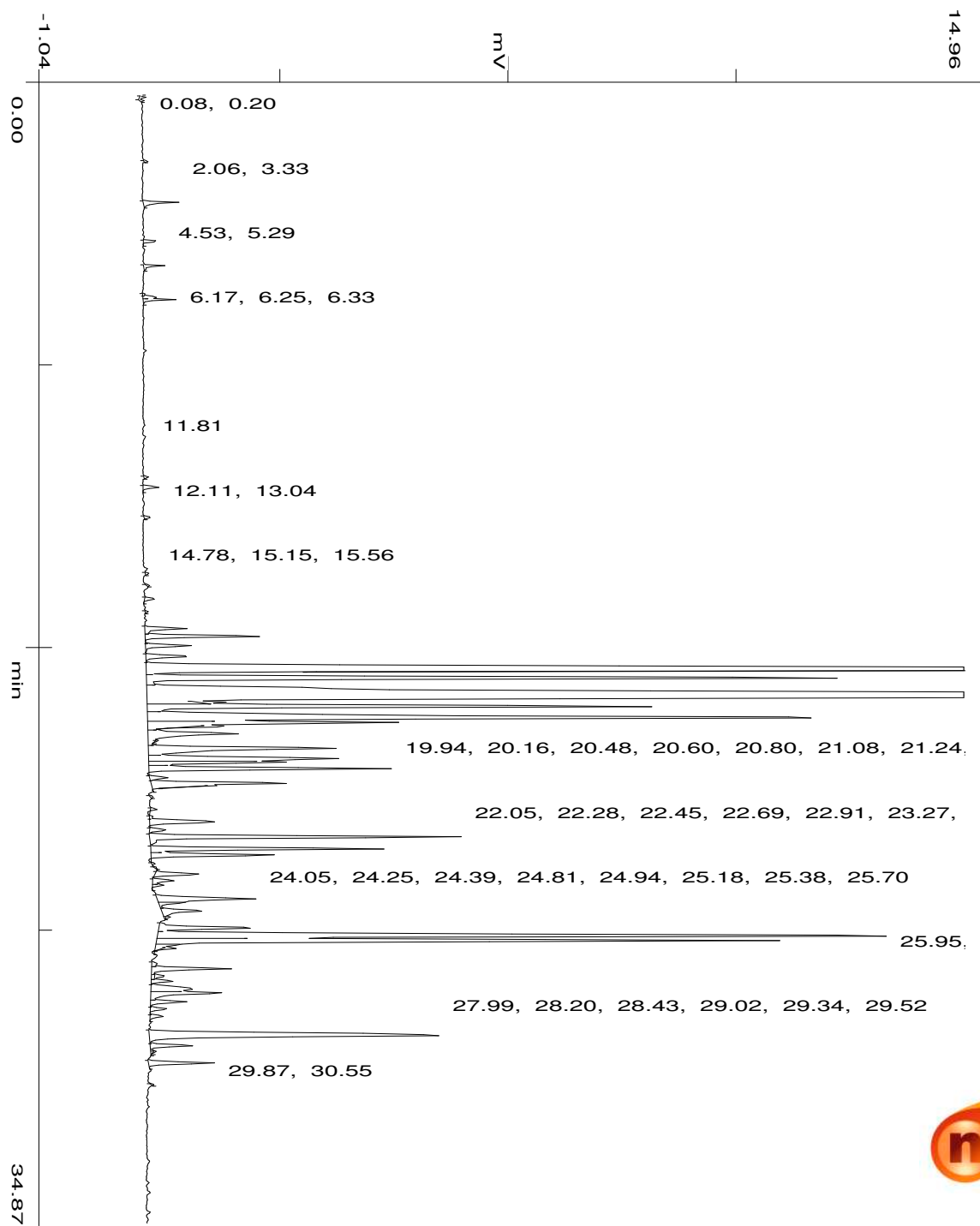
Date: 3 Nov 2023

Time: 11:19:4

Run: ch1: 0

Type of Analysis : Percent On Area

Pk.Width	Peak Thrsh.	Area Rej.	Ht.Rej.	Cht.Speed
4	30	5	4	0.50



min

51.89

No.	R.T.	Area	Area %	Pk Ty	Comp Name
1	0.08	4517	0.0311	BP	
2	0.20	2654	0.0183	PB	
3	2.06	2300	0.0158	BB	
4	3.33	26239	0.1805	BB	
5	4.53	9469	0.0651	BB	
6	5.29	13628	0.0937	BB	
7	6.17	1782	0.0123	BV	
8	6.25	10226	0.0703	VV	
9	6.33	21265	0.1462	VB	
10	11.81	2877	0.0198	BB	
11	12.11	12748	0.0877	BB	
12	13.04	4939	0.0340	BB	
13	14.78	2361	0.0162	BB	
14	15.15	1354	0.0093	BB	
15	15.56	9161	0.0630	BB	
16	15.96	1958	0.0135	BB	
17	16.48	40780	0.2805	BV	
18	16.71	107544	0.7396	VV	
19	17.00	44253	0.3043	VP	
20	17.33	45553	0.3133	PV	
21	17.71	1931406	13.2827	VV	Gurjunene <alpha->
22	17.76	166410	1.1444	TTT	
23	18.00	697789	4.7988	VV	
24	18.56	5005016	34.4206	VV	Beta-Gurjunene
25	18.74	14476	0.0996	TTT	
26	18.88	474171	3.2610	VV	
27	19.22	912546	6.2758	VV	
28	19.38	281445	1.9356	VV	
29	19.49	28565	0.1964	TTT	
30	19.71	131673	0.9055	VV	
31	19.94	2600	0.0179	TTT	
32	20.16	257861	1.7734	VV	
33	20.48	237631	1.6342	VV	
34	20.60	125961	0.8663	VV	

35	20.80	222457	1.5299	VP
36	21.08	16100	0.1107	PV
37	21.24	163645	1.1254	VB
38	21.33	13168	0.0906	TTT
39	21.67	1786	0.0123	BB
40	22.05	2572	0.0177	BP
41	22.28	2893	0.0199	PV
42	22.45	84941	0.5842	VP
43	22.69	17189	0.1182	PP
44	22.91	301445	2.0731	PP
45	23.27	213629	1.4692	PV
46	23.46	124311	0.8549	VP
47	23.72	1872	0.0129	PP
48	23.85	1033	0.0071	PB
49	24.05	47517	0.3268	BP
50	24.25	21383	0.1471	PV
51	24.39	8907	0.0613	VB
52	24.81	112202	0.7716	BV
53	24.94	24762	0.1703	S
54	25.18	50622	0.3481	VB
55	25.38	3121	0.0215	TTT
56	25.70	106411	0.7318	BV
57	25.95	820994	5.6461	VV
58	26.11	611933	4.2084	VV
59	26.23	27575	0.1896	S
60	26.35	11564	0.0795	TTT
61	26.82	6520	0.0448	BV
62	26.97	84664	0.5823	VV
63	27.19	9402	0.0647	TTT
64	27.35	19982	0.1374	VV
65	27.59	66807	0.4594	VV
66	27.72	85645	0.5890	VV
67	27.99	35606	0.2449	VV
68	28.20	16472	0.1133	VV
69	28.43	12153	0.0836	VB
70	29.02	447927	3.0805	BV
71	29.34	44133	0.3035	VB
72	29.52	2176	0.0150	TTT
73	29.87	60775	0.4180	BB
74	30.55	1321	0.0091	BB
		14540774	100.0000	

Summary :

TOTAL PEAKS : 74
MUL. FACTOR : 1.0000
SAMPLE AMT. 100.0000
ISTD AMT. 0.0000000e+00
DILUTION : 1.0000