

REPORT

COMPANY NAME : NISHANT AROMAS PRIVATE LIMITED, HARIDWAR

LOT NO.: ---

Sample Name: Jasmine Auriculatum Abs. DB5

Data File: C:\NuChrom\ch2def00\Jasmine Auriculatum Abs. DB5.dat

Method File: NEW01.MET

Detector: FID.

System: GC

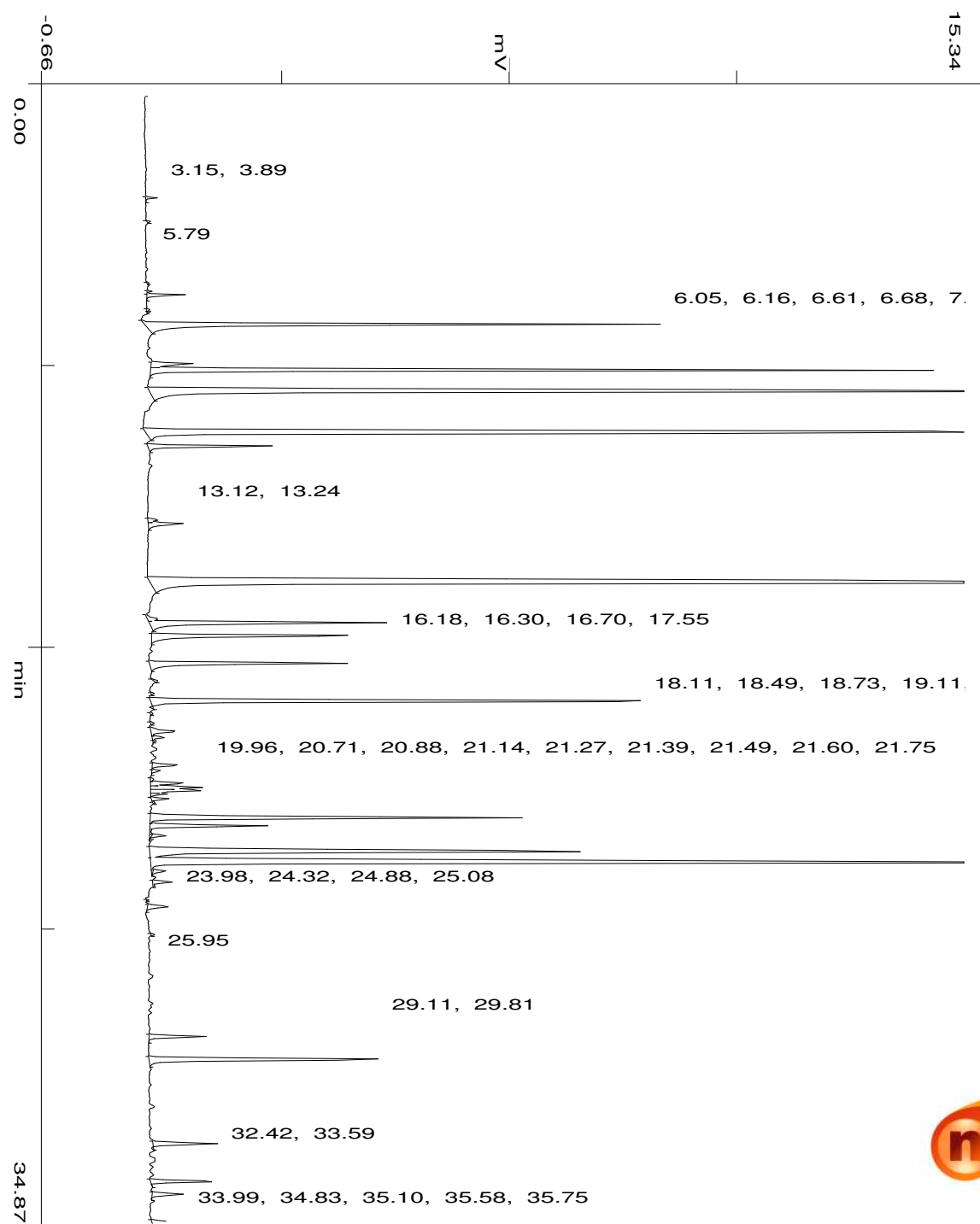
Date: 26 Sep 2023

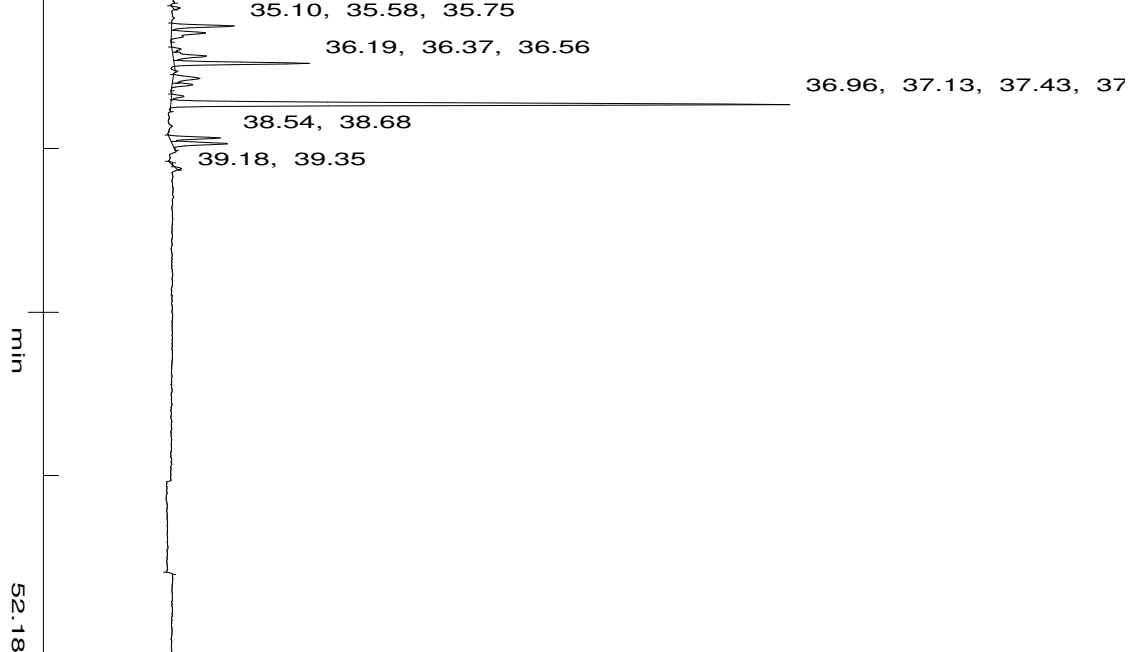
Time: 11:37:34

Run: ch1: 0

Type of Analysis : Percent On Area

Pk.Width	Peak Thrsh.	Area Rej.	Ht.Rej.	Cht.Speed
4	30	5	4	0.50





No.	R.T.	Area	Area %	Pk Ty	Comp Name
1	3.15	6310	0.0629	BB	
2	3.89	1531	0.0153	BB	
3	5.79	1273	0.0127	BB	
4	6.05	2549	0.0254	BP	
5	6.16	24836	0.2474	PB	
6	6.61	1691	0.0168	BV	
7	6.68	2095	0.0209	VB	
8	7.07	410722	4.0912	BB	
9	8.28	41453	0.4129	BV	
10	8.49	591071	5.8876	VB	
11	9.14	1154431	11.4993	BB	
12	10.42	1204992	12.0029	BB	Benzyl acetate
13	10.84	98987	0.9860	BB	
14	13.12	8773	0.0874	BV	
15	13.24	34498	0.3436	VB	
16	15.07	1772609	17.6569	BB	
17	16.18	11358	0.1131	BV	
18	16.30	213512	2.1268	VB	
19	16.70	197811	1.9704	BB	
20	17.55	186244	1.8552	BB	
21	18.11	3045	0.0303	BB	
22	18.49	2124	0.0212	BB	
23	18.73	496557	4.9462	BB	
24	19.11	1681	0.0167	BB	
25	19.42	2463	0.0245	BB	
26	19.67	27419	0.2731	BV	
27	19.85	9785	0.0975	VV	
28	19.96	2093	0.0208	VB	
29	20.71	24709	0.2461	BV	
30	20.88	7107	0.0708	VB	
31	21.14	3016	0.0300	BV	
32	21.27	30440	0.3032	VV	
33	21.39	41848	0.4169	VV	
34	21.49	46540	0.4636	VV	

35	21.60	12748	0.1270	VP	
36	21.75	13621	0.1357	PP	
37	21.87	1346	0.0134	PB	
38	22.34	345690	3.4434	BV	
39	22.59	103574	1.0317	VB	
40	22.89	11638	0.1159	TTT	
41	23.38	506159	5.0418	BV	
42	23.72	1079287	10.7508	VB	Benzoate <(3Z)-hexenyl->
43	23.98	11805	0.1176	TTT	
44	24.32	17642	0.1757	BB	
45	24.88	1239	0.0123	BB	
46	25.08	21511	0.2143	BB	
47	25.95	2390	0.0238	BB	
48	29.11	48778	0.4859	BB	
49	29.81	228045	2.2716	BB	
50	32.42	55603	0.5539	BB	
51	33.59	57146	0.5692	BB	
52	33.99	28433	0.2832	BB	
53	34.83	11374	0.1133	BB	
54	35.10	3922	0.0391	BB	
55	35.58	44981	0.4481	BV	
56	35.75	37617	0.3747	VB	
57	36.19	6872	0.0685	BV	
58	36.37	31837	0.3171	VV	
59	36.56	89964	0.8961	VB	
60	36.96	30464	0.3034	BV	
61	37.13	15547	0.1549	VB	
62	37.43	9572	0.0953	BV	
63	37.65	462363	4.6056	VB	
64	38.54	35645	0.3551	BV	
65	38.68	43278	0.4311	VB	
66	39.18	1114	0.0111	S	
67	39.35	2396	0.0239	PB	
		10039174	100.0000		

Summary :

TOTAL PEAKS : 67
MUL. FACTOR : 1.0000
SAMPLE AMT. 100.0000
ISTD AMT. 0.0000000e+00
DILUTION : 1.0000