

REPORT

COMPANY NAME: NISHANT AROMAS PRIVATE LIMITED, HARIDWAR

LOT NO.: ----

Sample Name: Gingergrass Oil DB5

Data File: C:\NuChrom\ch1def00\Gingergrass Oil DB5.dat

Method File: .MET

Detector: FID.

System: GC

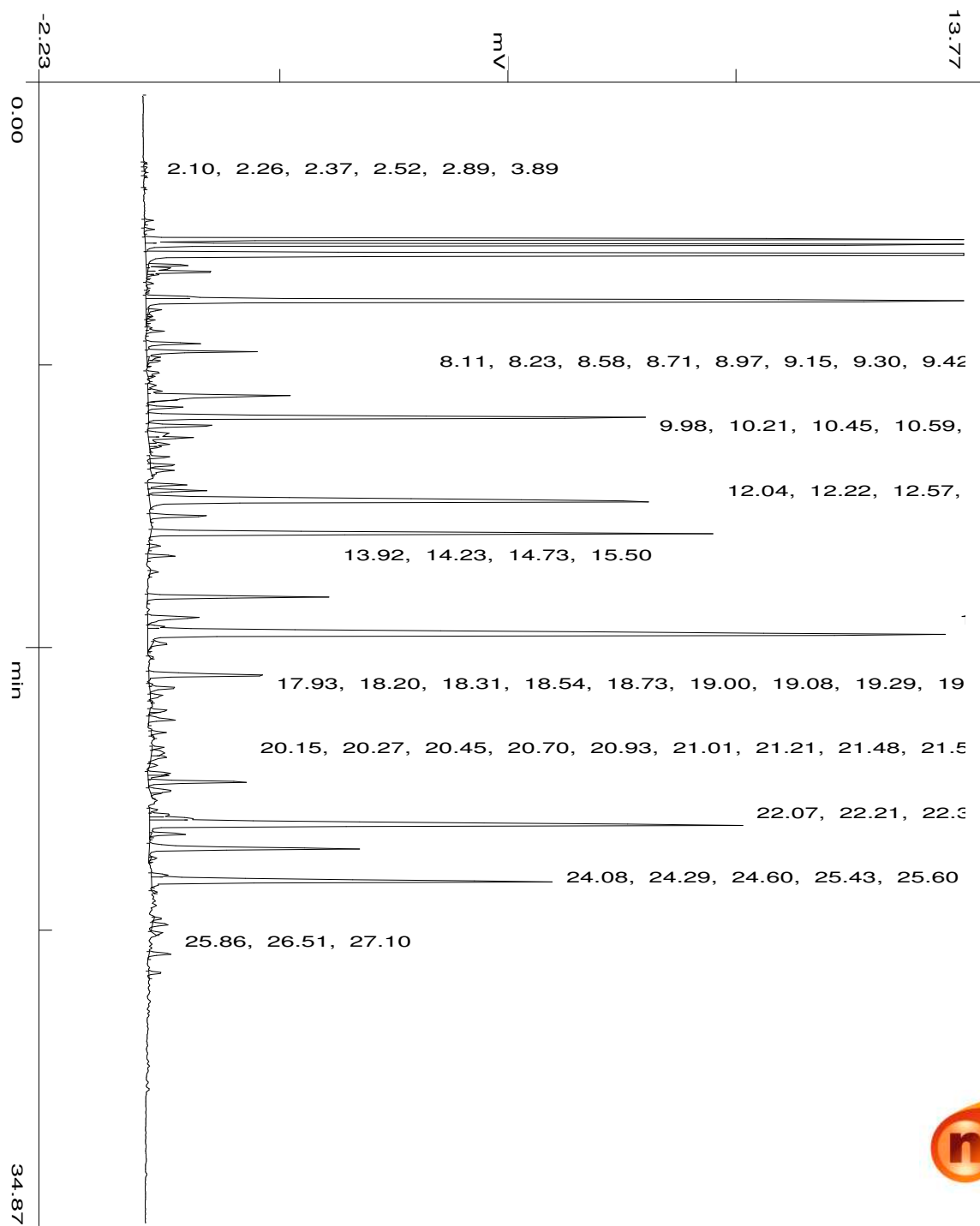
Date: 8 Nov 2023

Time: 15:11:58

Run: ch1: 0

Type of Analysis : Percent On Area

Pk.Width	Peak Thrsh.	Area Rej.	Ht.Rej.	Cht.Speed
4	30	5	4	0.50



min

46.75

No.	R.T.	Area	Area %	Pk Ty	Comp Name
1	2.10	1179	0.0097	BB	
2	2.26	2259	0.0186	BP	
3	2.52	1046	0.0086	BB	
4	3.89	4850	0.0399	BB	
5	4.16	6894	0.0567	BB	
6	4.48	760617	6.2538	BV	
7	4.64	676475	5.5620	VV	
8	4.97	3157613	25.9621	VB	Camphene
9	5.27	29269	0.2406	TTV	
10	5.37	20913	0.1720	TVV	
11	5.48	52147	0.4288	TVV	
12	5.56	7859	0.0646	TVT	
13	5.83	4341	0.0357	BB	
14	6.06	1881	0.0155	BB	
15	6.25	36827	0.3028	BV	
16	6.38	1183773	9.7331	VB	Limonene
17	6.65	9882	0.0813	TTV	
18	6.81	2386	0.0196	TVV	
19	6.86	2848	0.0234	TVV	
20	6.97	5029	0.0413	TVT	
21	7.21	3360	0.0276	BV	
22	7.30	11378	0.0936	VB	
23	7.68	47826	0.3932	BV	
24	7.93	87099	0.7161	VB	
25	8.11	9010	0.0741	TTV	
26	8.23	10209	0.0839	TVT	
27	8.58	13251	0.1089	BV	
28	8.71	3091	0.0254	VB	
29	8.97	8610	0.0708	BV	
30	9.15	13450	0.1106	VV	
31	9.30	157974	1.2989	VV	
32	9.42	5633	0.0463	TTT	
33	9.65	26543	0.2182	VP	
34	9.98	538212	4.4252	PP	
35	10.21	61007	0.5016	PP	
36	10.45	26536	0.2182	PV	
37	10.59	38226	0.3143	VV	
38	10.78	17164	0.1411	VV	
39	10.88	8837	0.0727	VB	
40	11.19	11276	0.0927	BP	

41	11.44	21409	0.1760	PP
42	11.59	23138	0.1902	PB
43	12.04	33091	0.2721	BV
44	12.22	47070	0.3870	VV
45	12.57	753938	6.1989	VB
46	13.00	54946	0.4518	BB
47	13.55	513625	4.2231	BB
48	13.92	9219	0.0758	BB
49	14.23	21746	0.1788	BB
50	14.73	6282	0.0517	BB
51	15.50	144775	1.1903	BB
52	16.13	67431	0.5544	BV
53	16.41	12629	0.1038	VV
54	16.68	1257895	10.3425	VB
55	16.95	18492	0.1520	TTT
56	17.37	2309	0.0190	BB
57	17.93	136563	1.1228	BP
58	18.20	2646	0.0218	PV
59	18.31	27022	0.2222	VP
60	18.54	13444	0.1105	PP
61	18.73	1275	0.0105	PB
62	19.00	14513	0.1193	BV
63	19.08	5425	0.0446	S
64	19.29	29055	0.2389	PB
65	19.69	10549	0.0867	BP
66	19.81	1137	0.0093	PB
67	20.15	8950	0.0736	BV
68	20.27	19202	0.1579	VV
69	20.45	17792	0.1463	VP
70	20.70	6598	0.0542	PP
71	20.93	20033	0.1647	PV
72	21.01	17064	0.1403	VV
73	21.21	98091	0.8065	VP
74	21.48	25926	0.2132	PV
75	21.58	6691	0.0550	S
76	22.07	7525	0.0619	BV
77	22.21	19365	0.1592	VV
78	22.33	38691	0.3181	VV
79	22.56	781753	6.4276	VB
80	22.82	27979	0.2300	TTT
81	23.27	228083	1.8753	BB
82	23.57	5264	0.0433	TTT
83	24.08	14816	0.1218	BV
84	24.29	463420	3.8103	VB
85	24.60	2373	0.0195	BB
86	25.43	5633	0.0463	BP
87	25.60	12601	0.1036	PP
88	25.86	6764	0.0556	PB
89	26.51	21105	0.1735	BB
90	27.10	10280	0.0845	BB
		12162400	100.0000	

Summary :

CH- 01

TOTAL PEAKS :	92
MUL. FACTOR :	1.0000
SAMPLE AMT.	100.0000
ISTD AMT.	0.0000000e+00
DILUTION :	1.0000