

REPORT

COMPANY NAME : NISHANT AROMAS PRIVATE LIMITED, HARIDWAR

LOT NO.: ---

Sample Name: Galbanum Oil DB5

Data File: C:\NuChrom\ch2def00\Galbanum Oil DB5.2.DAT

Method File: NEW01.MET

Detector: FID.

System: GC

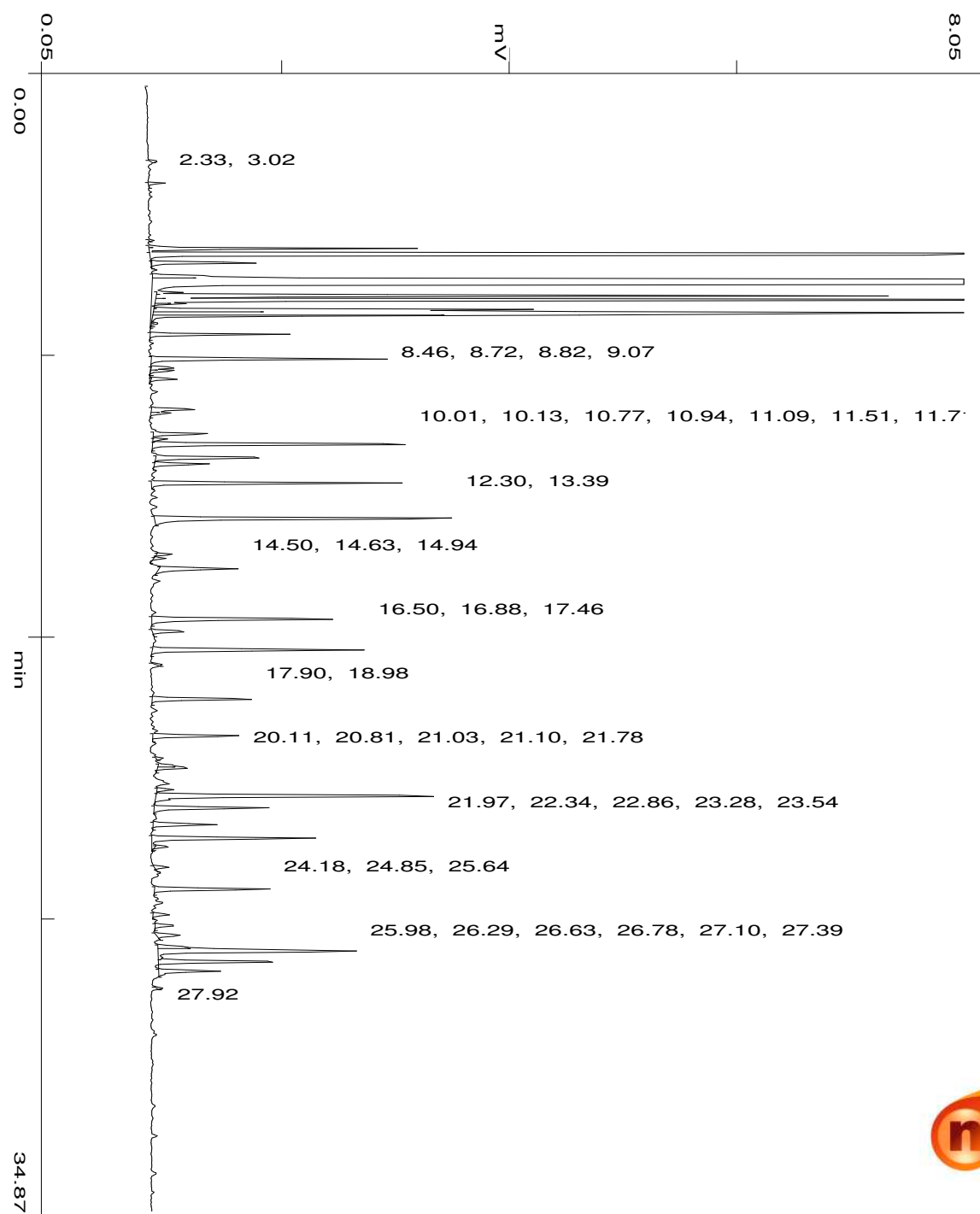
Date: 9 Nov 2023

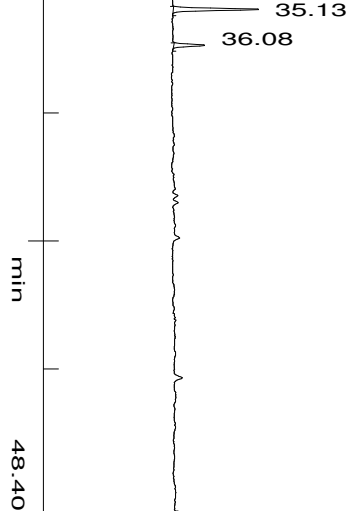
Time: 12:57:48

Run: ch1: 0

Type of Analysis : Percent On Area

Pk.Wdth	Peak Thrsh.	Area Rej.	Ht.Rej.	Cht.Speed
4	30	5	4	0.50





No.	R.T.	Area	Area %	Pk Ty	Comp Name
1	2.33	2286	0.0170	BB	
2	3.02	5096	0.0380	BB	
3	4.79	1229	0.0092	BB	
4	4.97	2584	0.0192	BV	
5	5.04	73869	0.5504	VV	
6	5.22	1215805	9.0582	VB	Pinene <alpha->
7	5.48	39047	0.2909	TTT	
8	5.90	24389	0.1817	BV	
9	6.09	8855030	65.9735	VB	Pinene <beta->
10	6.40	7306	0.0544	TTV	
11	6.50	216096	1.6100	TVV	
12	6.63	550793	4.1036	TVV	
13	6.74	8963	0.0668	TVV	
14	6.94	135199	1.0073	TVV	
15	7.03	548711	4.0881	TVV	
16	7.10	125890	0.9379	TVV	
17	7.36	2774	0.0207	TVT	
18	7.69	44304	0.3301	BB	
19	8.46	84426	0.6290	BB	
20	8.72	9119	0.0679	TTV	
21	8.82	9715	0.0724	TVT	
22	9.07	10100	0.0752	TTT	
23	10.01	19279	0.1436	BV	
24	10.13	7642	0.0569	VB	
25	10.77	22324	0.1663	BV	
26	10.94	5086	0.0379	VV	
27	11.09	114962	0.8565	VB	
28	11.51	47173	0.3515	BV	
29	11.71	21882	0.1630	VB	
30	12.30	93063	0.6934	BB	
31	13.39	139415	1.0387	BB	
32	14.50	5728	0.0427	BV	
33	14.63	3986	0.0297	VB	
34	14.94	36476	0.2718	BB	
35	16.50	86965	0.6479	BB	
36	16.88	13719	0.1022	BB	
37	17.46	85553	0.6374	BB	
38	17.90	1964	0.0146	BB	

39	18.98	45491	0.3389	BB
40	20.11	37773	0.2814	BB
41	20.81	2371	0.0177	BB
42	21.03	6278	0.0468	BV
43	21.10	12727	0.0948	VB
44	21.78	6894	0.0514	BV
45	21.97	136788	1.0191	VP
46	22.34	50523	0.3764	PB
47	22.86	27365	0.2039	BB
48	23.28	75555	0.5629	BB
49	23.54	6006	0.0447	TTT
50	24.18	4850	0.0361	BB
51	24.85	52107	0.3882	BB
52	25.64	7296	0.0544	BB
53	25.98	9300	0.0693	BB
54	26.29	12482	0.0930	BB
55	26.63	11219	0.0836	S
56	26.78	113997	0.8493	BV
57	27.10	54540	0.4063	VP
58	27.39	28301	0.2109	PB
59	27.92	2002	0.0149	BB
60	35.13	29248	0.2179	BB
61	36.08	11044	0.0823	BB
		13422106	100.0000	

Summary :

TOTAL PEAKS : 61
MUL. FACTOR : 1.0000
SAMPLE AMT. 100.0000
ISTD AMT. 0.0000000e+00
DILUTION : 1.0000