

REPORT

COMPANY NAME : NISHANT AROMAS PRIVATE LIMITED, HARIDWAR

LOT NO. : ---

Sample Name: Clary Sage Oil DB5

Data File: C:\NuChrom\ch2def00\Clary Sage Oil DB5.DAT

Method File: NEW01.MET

Detector: FID.

System: GC

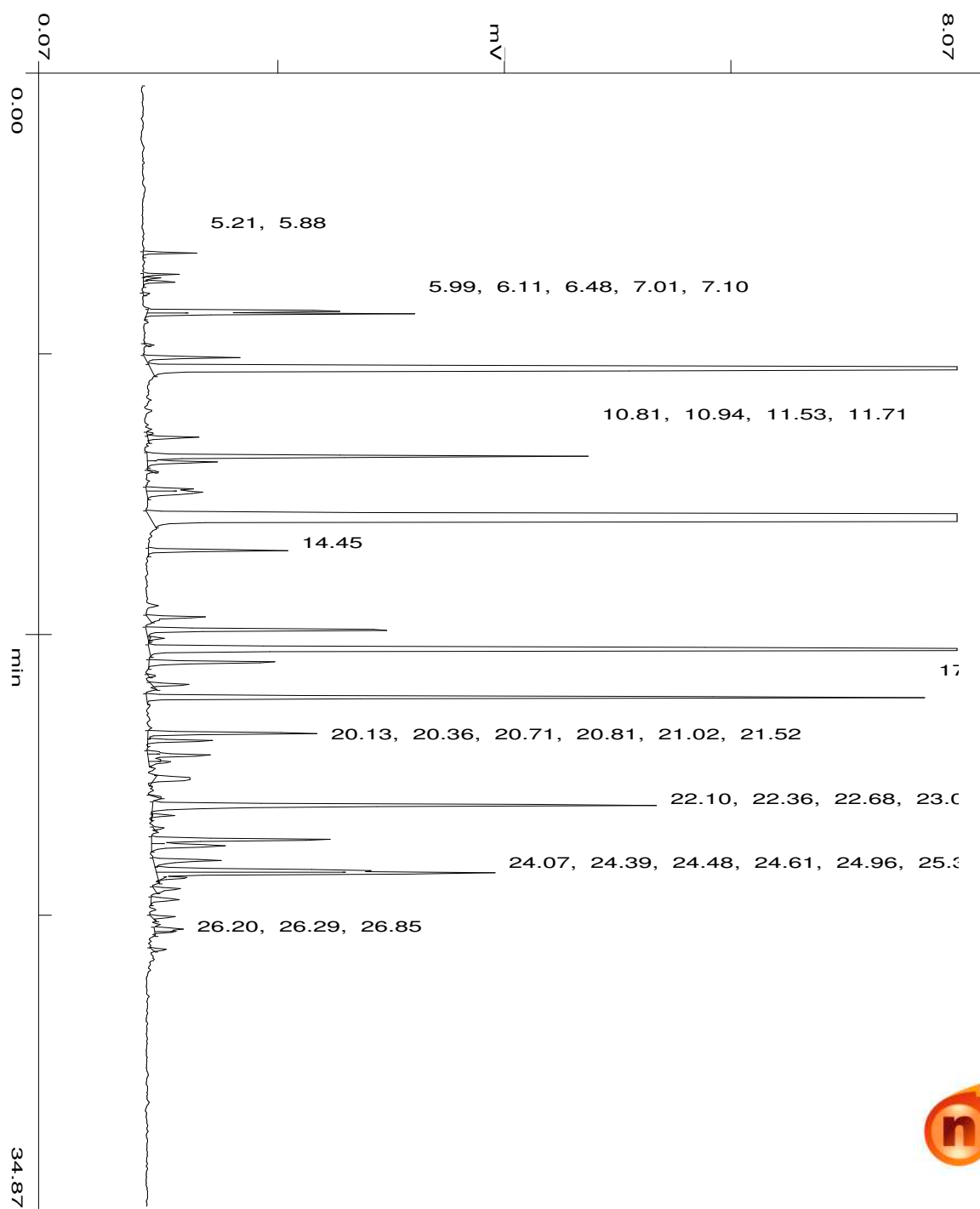
Date: 9 Nov 2023

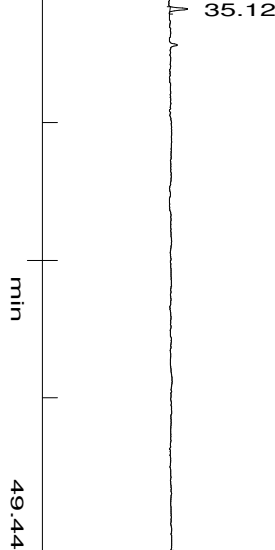
Time: 16:39:14

Run: ch1: 0

Type of Analysis : Percent On Area

Pk.Width	Peak Thrsh.	Area Rej.	Ht.Rej.	Cht.Speed
4	30	5	4	0.50





No.	R.T.	Area	Area %	Pk Ty	Comp Name
1	5.21	15218	0.1371	BB	
2	5.88	10029	0.0904	BV	
3	5.99	5568	0.0502	VV	
4	6.11	12005	0.1082	VB	
5	6.48	2120	0.0191	BB	
6	7.01	74407	0.6704	BV	
7	7.10	82272	0.7413	VB	
8	8.07	2175	0.0196	BB	
9	8.46	36190	0.3261	BP	
10	8.84	2252257	20.2930	PB	Linalool
11	10.81	2541	0.0229	BV	
12	10.94	19107	0.1722	VB	
13	11.53	180169	1.6233	BV	
14	11.71	30967	0.2790	VB	
15	12.00	1832	0.0165	BB	
16	12.54	19508	0.1758	BV	
17	12.64	38928	0.3507	VB	
18	13.51	5547242	49.9811	BB	Linalyl Acetate
19	14.45	55899	0.5037	BB	
20	16.52	27709	0.2497	BB	
21	16.91	118074	1.0639	BB	
22	17.18	5249	0.0473	TTT	
23	17.53	1131587	10.1957	BB	
24	17.92	64201	0.5785	BB	
25	18.34	2659	0.0240	BB	
26	18.62	14288	0.1287	BB	
27	19.02	346779	3.1245	BB	
28	20.13	77951	0.7023	BV	
29	20.36	29243	0.2635	VB	
30	20.71	5485	0.0494	BV	
31	20.81	34271	0.3088	VV	
32	21.02	11085	0.0999	VB	
33	21.52	31346	0.2824	BB	
34	22.10	1705	0.0154	BB	
35	22.36	278483	2.5092	BB	
36	22.68	7553	0.0681	TTT	
37	23.08	3687	0.0332	BB	

38	23.43	91469	0.8241	BV
39	23.63	45685	0.4116	VB
40	24.07	39490	0.3558	BV
41	24.39	97816	0.8813	VV
42	24.48	161911	1.4588	VB
43	24.61	10635	0.0958	TTT
44	24.96	14158	0.1276	BB
45	25.30	15836	0.1427	BB
46	25.83	9453	0.0852	BB
47	26.20	13628	0.1228	BV
48	26.29	7010	0.0632	VB
49	26.85	5623	0.0507	BB
50	35.12	6173	0.0556	BB
		11098675	100.0000	

**Summary :**

**TOTAL PEAKS :** 50  
**MUL. FACTOR :** 1.0000  
**SAMPLE AMT.** 100.0000  
**ISTD AMT.** 0.0000000e+00  
**DILUTION :** 1.0000