

REPORT

COMPANY NAME: NISHANT AROMAS PRIVATE LIMITED, HARIDWAR

LOT NO.: ---

Sample Name: Choya Loban Oil DB5

Data File: C:\NuChrom\ch1def00\Choya Loban Oil DB5.dat

Method File: .MET

Detector: FID.

System: GC

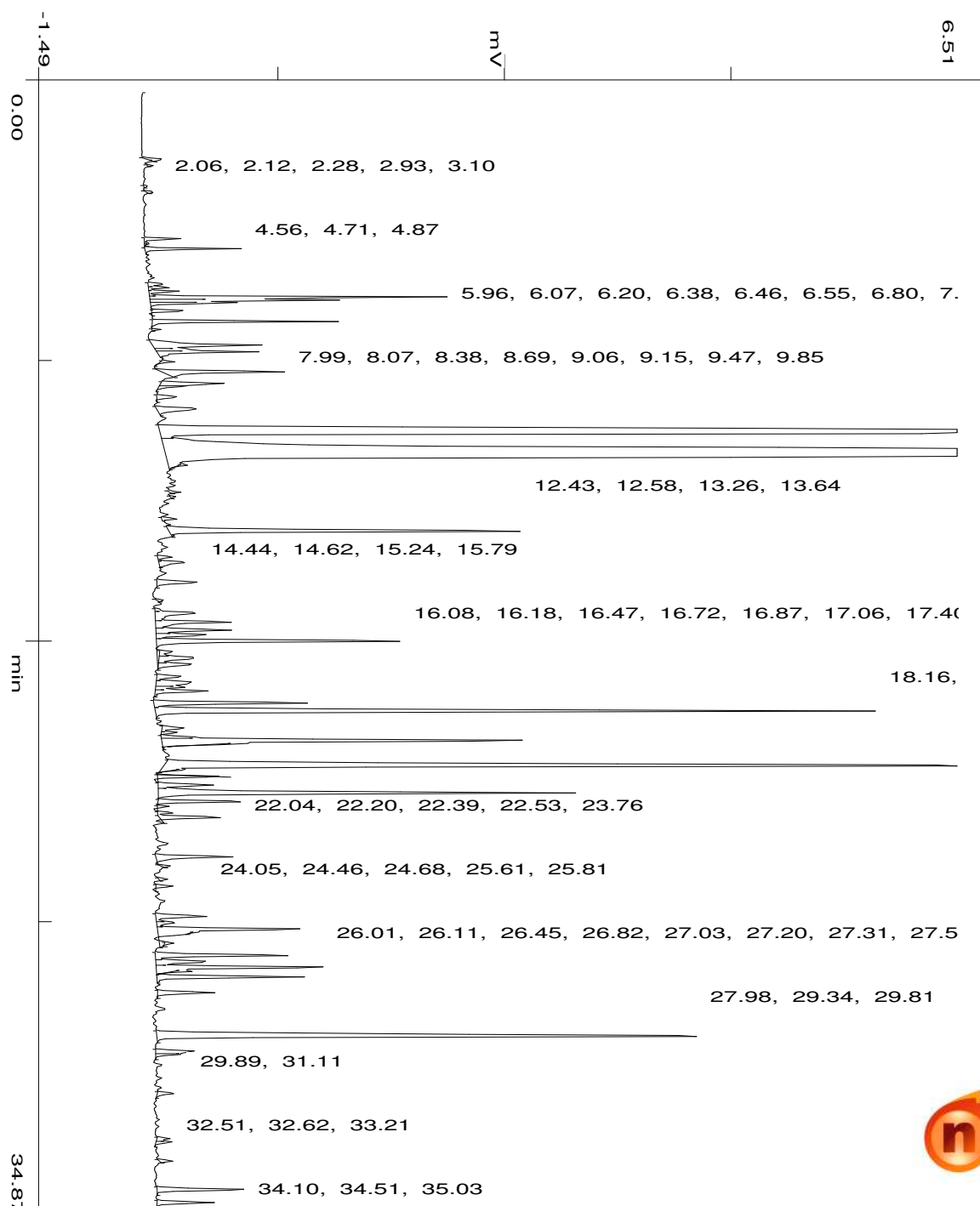
Date: 30 Nov 2023

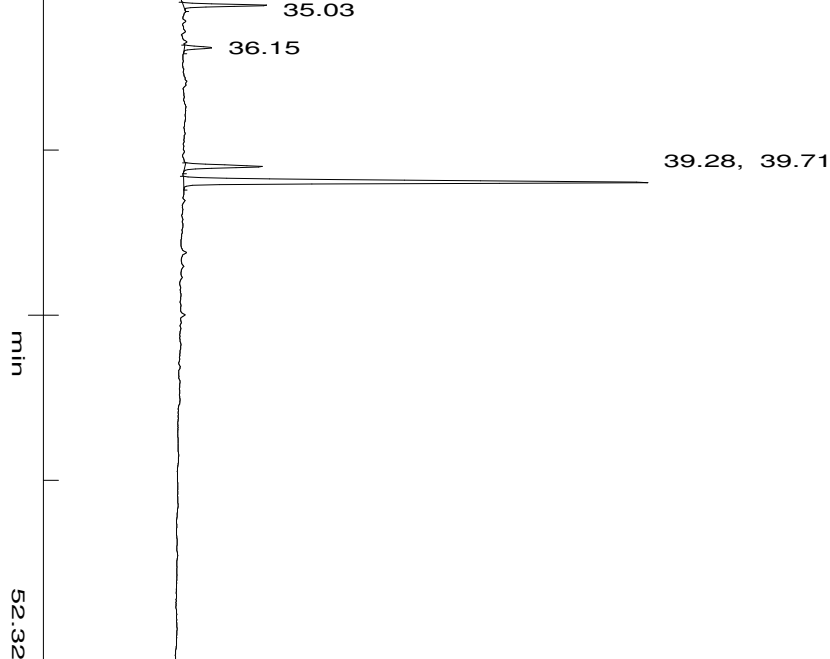
Time: 17:16:16

Run: ch1: 0

Type of Analysis : Percent On Area

Pk.Width	Peak Thrsh.	Area Rej.	Ht.Rej.	Cht.Speed
4	30	5	4	0.50





No.	R.T.	Area	Area %	Pk Ty	Comp Name
1	2.06	3949	0.0391	BV	
2	2.12	2396	0.0237	VB	
3	2.28	1253	0.0124	BB	
4	2.93	1203	0.0119	BB	
5	3.10	2087	0.0207	BB	
6	4.56	13268	0.1314	BP	
7	4.71	1087	0.0108	TTT	
8	4.87	29283	0.2900	PB	
9	5.96	7053	0.0699	BV	
10	6.07	7703	0.0763	VV	
11	6.20	11410	0.1130	VV	
12	6.38	101250	1.0027	VV	
13	6.46	70360	0.6968	VV	
14	6.55	31288	0.3099	VV	
15	6.80	11674	0.1156	VB	
16	7.13	63517	0.6290	BP	
17	7.38	2417	0.0239	PB	
18	7.87	58586	0.5802	BV	
19	7.99	13696	0.1356	VV	
20	8.07	41609	0.4121	VB	
21	8.38	5077	0.0503	BB	
22	8.69	55449	0.5491	BB	
23	9.06	27252	0.2699	BV	
24	9.15	11438	0.1133	S	
25	9.47	10466	0.1037	BB	
26	9.85	27983	0.2771	BB	
27	10.59	1577669	15.6246	BV	Terpinen-4-ol
28	11.32	4356540	43.1454	VB	Estragole
29	11.58	3492	0.0346	TTT	
30	12.43	3054	0.0302	BB	
31	12.58	1486	0.0147	BB	
32	13.26	5327	0.0528	BB	
33	13.64	181344	1.7960	BB	
34	14.44	6096	0.0604	BV	

35	14.62	15366	0.1522	VB
36	15.24	22211	0.2200	BB
37	15.79	2033	0.0201	BB
38	16.08	2347	0.0232	BV
39	16.18	31111	0.3081	VV
40	16.47	40779	0.4039	VV
41	16.72	36713	0.3636	VV
42	16.87	24254	0.2402	VV
43	17.06	123142	1.2195	VB
44	17.40	7724	0.0765	TTV
45	17.57	26416	0.2616	TVV
46	17.78	19842	0.1965	TVT
47	18.16	13682	0.1355	BV
48	18.34	27595	0.2733	VV
49	18.49	12952	0.1283	VV
50	18.61	24792	0.2455	VB
51	18.98	72557	0.7186	BV
52	19.24	342739	3.3944	VB
53	19.77	10931	0.1083	BV
54	19.90	6246	0.0619	VP
55	20.04	10991	0.1088	PV
56	20.16	207798	2.0580	VB
57	20.25	10373	0.1027	TTT
58	20.94	711073	7.0422	BV
59	21.06	4517	0.0447	TTT
60	21.27	24983	0.2474	PP
61	21.53	27311	0.2705	PV
62	21.78	206417	2.0443	VP
63	22.04	37178	0.3682	PP
64	22.20	2387	0.0236	PP
65	22.39	5634	0.0558	PP
66	22.53	23789	0.2356	PB
67	23.76	38837	0.3846	BP
68	24.05	2760	0.0273	PB
69	24.46	2866	0.0284	BB
70	24.68	6174	0.0611	BB
71	25.61	26091	0.2584	BV
72	25.81	9978	0.0988	VV
73	26.01	95349	0.9443	VB
74	26.11	2179	0.0216	TTT
75	26.45	3130	0.0310	TTT
76	26.82	63047	0.6244	BV
77	27.03	28635	0.2836	VV
78	27.20	88931	0.8807	VV
79	27.31	7739	0.0766	TTT
80	27.50	65055	0.6443	VB
81	27.98	26667	0.2641	BB
82	29.34	331848	3.2865	BB
83	29.81	18399	0.1822	BV
84	29.89	10843	0.1074	VB
85	31.11	8432	0.0835	BB
86	32.51	5772	0.0572	BV
87	32.62	6734	0.0667	VB
88	33.21	4633	0.0459	BB
89	34.10	42095	0.4169	BB

90	34.51	24997	0.2476	BB
91	35.03	29345	0.2906	BB
92	36.15	10328	0.1023	BB
93	39.28	32202	0.3189	BB
94	39.71	220632	2.1851	BB
		10097343	100.0000	

Summary :

CH- 01

TOTAL PEAKS : 95
MUL. FACTOR : 1.0000
SAMPLE AMT. 100.0000
ISTD AMT. 0.0000000e+00
DILUTION : 1.0000