

REPORT

COMPANY NAME: NISHANT AROMAS PRIVATE LIMITED, HARIDWAR

LOT NO.: ---

Sample Name: Blue Lotus Absolute DB5

Data File: C:\NuChrom\ch1def00\Blue Lotus Absolute DB5.dat

Method File: .MET

Detector: FID.

System: GC

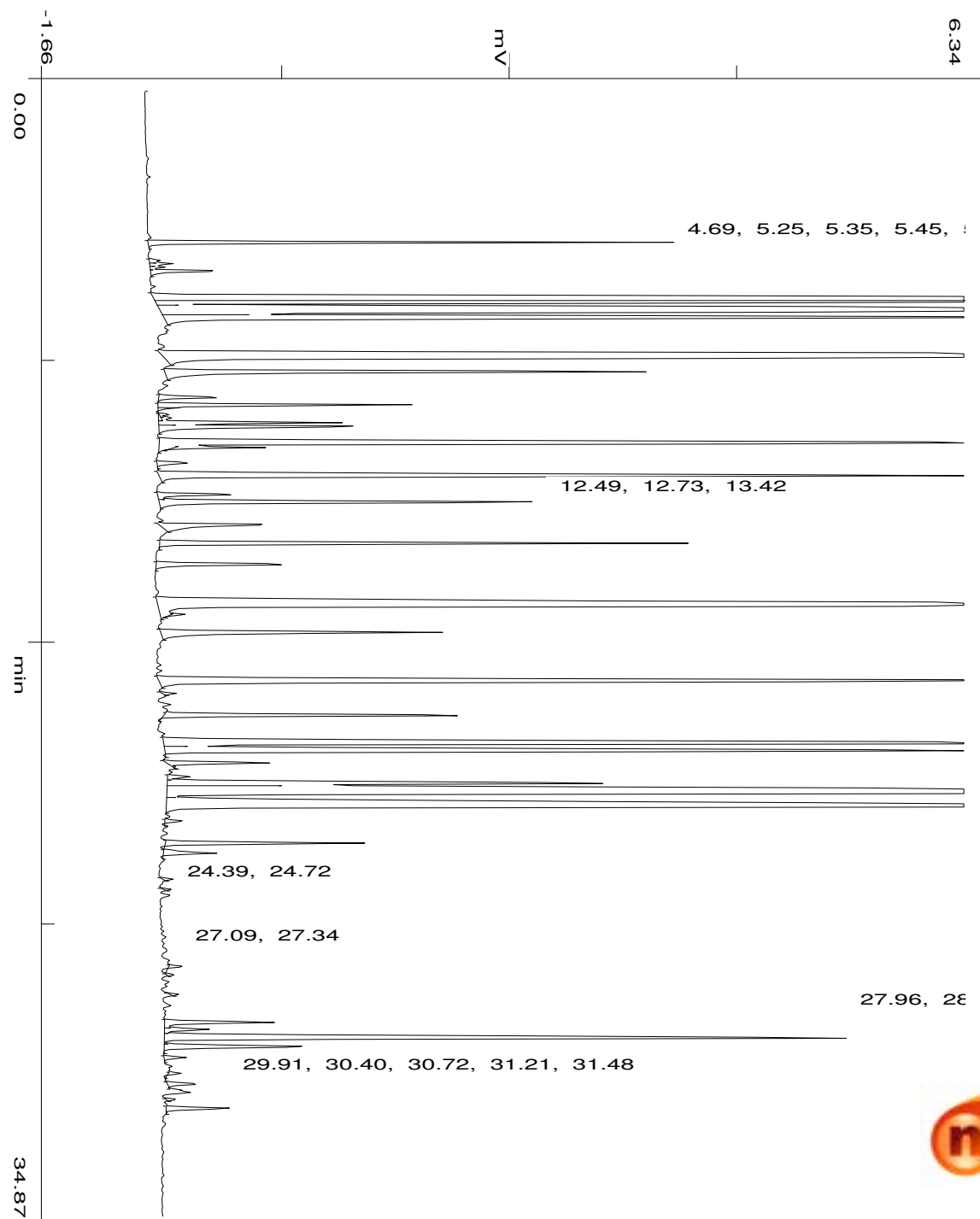
Date: 1 Dec 2023

Time: 10:26:12

Run: ch1: 0

Type of Analysis : Percent On Area

Pk.Width	Peak Thrsh.	Area Rej.	Ht.Rej.	Cht.Speed
4	30	5	4	0.50



min

48.94

No.	R.T.	Area	Area %	Pk Ty	Comp Name
1	4.69	168348	0.9622	BB	
2	5.25	5014	0.0287	BV	
3	5.35	8626	0.0493	VV	
4	5.45	5713	0.0327	VV	
5	5.58	29706	0.1698	VB	
6	6.44	1637432	9.3588	BV	
7	6.54	1769960	10.1162	VV	
8	6.83	1521379	8.6955	VV	Benzyl alcohol
9	7.01	625834	3.5770	VB	
10	8.25	2283693	13.0525	BB	Methyl benzoate
11	8.69	220667	1.2612	BB	
12	9.49	28387	0.1622	BP	
13	9.72	94646	0.5409	PV	
14	9.82	9779	0.0559	S	
15	10.02	3804	0.0217	TTV	
16	10.12	4257	0.0243	TVT	
17	10.27	70846	0.4049	VV	
18	10.39	96837	0.5535	VB	
19	10.91	635818	3.6340	BB	
20	11.03	29983	0.1714	TTT	
21	11.51	14170	0.0810	BB	
22	11.92	474121	2.7098	BB	
23	12.49	35192	0.2011	BV	
24	12.73	179134	1.0238	VB	
25	13.42	64536	0.3689	BB	
26	14.01	212577	1.2150	BB	
27	14.65	60488	0.3457	BB	
28	15.93	1228230	7.0200	BB	
29	16.21	5560	0.0318	TTT	
30	16.76	142093	0.8121	BB	
31	18.26	663234	3.7907	BB	
32	18.65	4543	0.0260	BB	
33	19.33	138105	0.7893	BB	
34	20.20	692290	3.9568	BV	
35	20.43	565716	3.2334	VB	
36	20.79	42014	0.2401	BB	
37	21.22	10683	0.0611	BV	

38	21.42	229576	1.3121	VV
39	21.73	1643049	9.3909	VV
40	22.15	1110390	6.3465	VB
41	22.59	7086	0.0405	BB
42	23.28	82930	0.4740	BP
43	23.59	25844	0.1477	PB
44	24.39	3411	0.0195	BB
45	24.72	1900	0.0109	BB
46	27.09	2334	0.0133	BP
47	27.34	2580	0.0147	PB
48	27.96	2803	0.0160	BB
49	28.82	53370	0.3050	BV
50	29.04	21094	0.1206	VV
51	29.31	392727	2.2446	VV
52	29.57	74032	0.4231	VB
53	29.91	9824	0.0561	BB
54	30.40	4310	0.0246	BB
55	30.72	13392	0.0765	BP
56	31.21	3214	0.0184	BB
57	31.48	28950	0.1655	BB
17496230			100.0000	

Summary :

CH- 01

TOTAL PEAKS : 57
MUL. FACTOR : 1.0000
SAMPLE AMT. 100.0000
ISTD AMT. 0.0000000e+00
DILUTION : 1.0000